

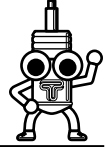


HOOD DAMPER

Installation / Instruction Manual

< Thoroughly Read This Manual Prior To Installation / Use >

Thank you for purchasing TEIN HOOD DAMPER.
Please contact us if you have any questions regarding the product or this manual.
If you do not agree to what is written in this manual, please do NOT use the product.



IMPORTANT This product is ONLY compatible with the vehicle model(s) listed below.

Vehicle Make / Model / Year	NISSAN 350Z
-----------------------------	-------------

※Plastic covers need to be cut or removed.

Contact Information

TEIN U.S.A., INC.

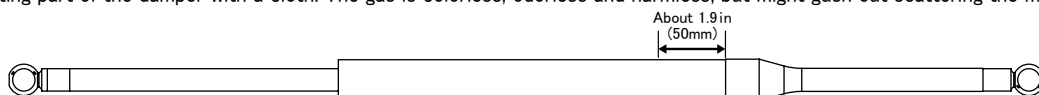
9798 Firestone Blvd. Downey, CA 90241
Phone(562)861-9161 / Fax(562)861-9171
URL: <http://www.tein.com>

TEIN UK LIMITED

Unit 7 Avant Business Centre, Denbigh West Industrial Estate
Milton Keynes MK1 1DL United Kingdom
Phone(0870)606-6543 / Fax(0870)600-1161
URL: <http://www.tein.co.uk>

[Precautions]

- WARNING** Do NOT install / use on the vehicle models that are not compatible with the product.
- IMPORTANT** Please keep this manual in the vehicle on which the product is installed at all time. When such vehicle is transferred to another person, this manual should be transferred along with the product and the vehicle.
- WARNING** TEIN takes NO responsibility for damage, injury or death caused directly or indirectly by the product or the use of the product, if instructions in this manual are not followed properly.
- IMPORTANT** TEIN assumes NO responsibility for any charges, labor fees, shipping fees, time loss or repair fees associated with installation or un-installation of the product.
- WARNING** This product contains high pressure nitrogen gas. Do NOT disassemble, modify or expose to flame. Avoid damaging or grabbing the body / moving parts of the product with tools, as doing so might result in malfunction of the product. If any damage is found, immediately discontinue the use and remove the product from the vehicle.
- WARNING** This product is intended to aid opening / closing of the hood. Be sure to use the OE stopper, when working on the engine bay. Without the stopper, the hood might shut with an influence of the external factor, such as wind gust and/or added weight. The strength of the damper, to support the hood, changes according to the angle of the hood. Please pay an extra attention and avoid getting hands caught in when opening / closing the hood. Also, please pay an extra attention when using the product in cold area, as the strength of the product might decrease and the hood could not be supported due to the decline in the gas pressure.
- CAUTION** **This product is only compatible with the OE hood.** Please be sure to check for any interference upon installation. TEIN takes NO responsibility for any damage, injury or death caused directly or indirectly, if the product is used with non-OE hood. Installation / use of the product with non-OE hood should be done at your own risk, as there might be some interference. Please make sure there is NO interference and/or abnormality after the installation and periodically thereafter.
- CAUTION** TEIN takes NO responsibility for any consequential event caused directly or indirectly by the use of this product, such as traffic accident, traffic ticket, loss due to the suspended use of the vehicle.
- CAUTION** Please be careful when opening / closing the hood with this product installed, as **closing with the strong force might cause the deformation of the hood.**
- CAUTION** **Due to individual differences, this product might interfere with the hood and/or fender. Use extreme caution when closing the hood for the first time after the product has been installed.**
- CAUTION** **Depending on the vehicles, The installation of Hood dampers may cause interference between the hood and surrounding parts due to the change of clearance. Make sure to check after installation that there is no interference.**
TEIN shall not be responsible for any injuries, accidents or damages caused by such neglect.
- CAUTION** Please periodically check screws, threads and/or bolts for any looseness. Loosened parts might cause noise problems, interference, accident and/or injuries.
- CAUTION** Do NOT apply any lubricant on to the moving parts of the product, as doing so might damage the seal confining the gas and eventually cause gas leak.
- CAUTION** Prior to disposing of the product, make sure the damper is fully extended, and cut where it is about 1.9in (50mm) from the end with a hacksaw according to the diagram shown below to discharge the gas completely. Be sure to wear protection glasses and cover the cutting part of the damper with a cloth. The gas is colorless, odorless and harmless, but might gush out scattering the metal chips.

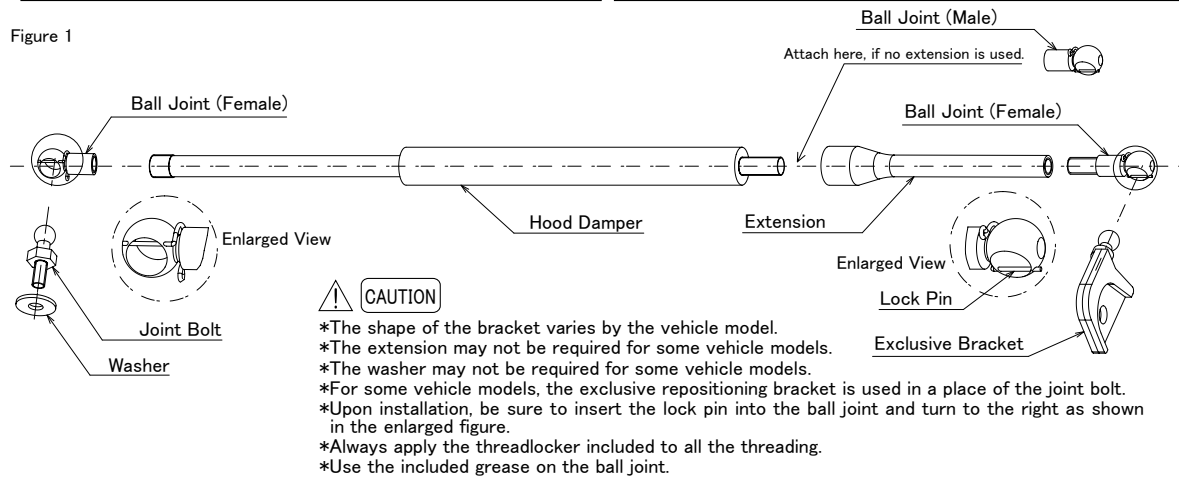


[Contents of the Kit]

Part No.	BHD01-P26
----------	-----------

Description	Qty	Part No.	Description	Qty	Part No.
Installation / Instruction Manual	1	INSBD-P26	Ball Joint (Female)	4	BHP06-J2747
Hood Damper	2	31030KG	Washer	0	-
Extension	0	-	Bolt	2	BHP08-J2750
Exclusive bracket	1 ea.	BHP02-L2042-R/L	Collar	0	-
Exclusive Repositioning bracket	1 ea.	BHP03-L2043-R/L	Nut	0	-
Joint Bolt	0	-	Threadlocker	1	SST01-F2223
Ball Joint (Male)	0	-	Grease	1	BHP11-J2753

Figure 1



[Installation Procedure]

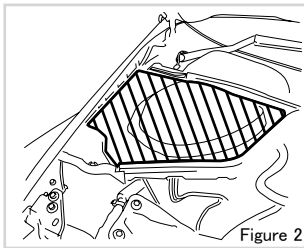


Figure 2

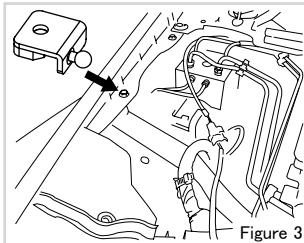


Figure 3

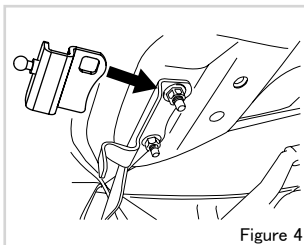


Figure 4

- Assemble the Hood Damper (see figure 1)
 - attach both upper and lower Ball Joints (female and male) to the hood damper.
 - attach extension if it applies to your application (some hood damper kits do not require the use of an extension, see the contents of the kit).

CAUTION Apply the supplied threadlock (shake well before use) to the threaded section, and then fully tighten by hand. Ensure that no portion of the threaded section is visible.
- Open the hood and secure it with the OEM hood prop.
- Remove the plastic cover (see figure 2, section with diagonal lines). If you do not wish to remove the cover, you may trim/ cut the cover in order to create enough clearance for the hood damper.
- Install the fender bracket to the vehicle at the specified torque (see figure 3).

7.23 ft-lb (9.8 N-m) (1.0 kgf-m)

CAUTION Be sure to use a torque wrench as the 6mm ball joint thread can easily be over tightened. Note - TEIN unfortunately will and does NOT provide free replacement parts, so care should be used when tightening parts.
- Remove lock pin on hood damper (female ball joint - see figure 1, enlarged view of ball joint and lock pin). Apply the supplied grease onto the ball joint. Install the assembled hood damper to the fender bracket - male ball joint on fender bracket to female ball joint on hood damper. Then re-install lock pin on female ball joint.

CAUTION Be sure to place the hood damper in the correct orientation, which is INVERTED (shock body side up and piston side down). Installing the hood damper in the wrong orientation may damage the gas seal and cause the hood damper to leak.
- Remove the upper nut securing the hood to the OEM hood hinge (see figure 4). Then mount the TEIN hood bracket to the OEM hood hinge with the ball joint facing outside of vehicle. Re-attach the OEM nut to the specified torque. Note - the TEIN hood damper sits against the OEM hood hinge and **NOT** between the hood and OEM hood hinge.

7.9~10.8 ft-lb (10.8~14.6 N-m) (1.1~1.5kgf-m)

CAUTION The hood damper brackets are asymmetric for some vehicles, be sure to install the brackets in the correct orientation.

(R: on the right side of the vehicle, L: on the left side of the vehicle while sitting in the vehicle).
(if NO additional hardware (bold/ nut) us included, re-use the OE hardware)
- Remove lock pin on hood damper (female ball joint - see figure 1, enlarged view of ball joint and lock pin). Apply the supplied grease onto the ball joint. Install the assembled hood damper to the hood bracket - male ball joint on hood bracket to female ball joint on hood damper. Then re-install lock pin on female ball joint.

CAUTION The hood damper should be on the outside of the TEIN hood bracket.
- Slowly close the hood to check for interference between the hood damper and hood, fender, and/or any other parts. Use care and caution on the initial closure of the hood as the hood dampers are fairly stiff. If you feel that the hood cannot close with the hood dampers installed, please immediately cease attempts to close the hood and contact your local TEIN Authorized Dealer for assistance.