



P.O. Box 1719
 Corona, CA 92878
 Support: 951-493-7100
 www.aFeFilters.com

Intake Kit Installation Instructions: 2005 Nissan Frontier/ Pathfinder/ Xterra V6-4.0L

Kit Part #	54-10492	Tools Required:	Parts List:	2 Spacer nylon
Make:	Nissan	5/16" nut driver	1 Air Filter (p/n#24-91034)	1 Gasket MAF sensor
Model	Year	Engine	1 Intake tube	1 Trim seal 3/4" Bulb (26.5")
Frontier	2005	V6-4.0L	1 Intake housing	1 Coupler 3.5"x4"
Pathfinder	2005	V6-4.0L	2 Screw M6x1x25	2 Clamps #060
Xterra	2005	V6-4.0L	2 M6 washer	
			2 Washer wavy M6	
			2 M6 nut	
			2 Phillips screw #8-32	



Step 1
 Complete kit. Please verify all components are present prior to beginning installation.



Step 2
 Complete stock intake.



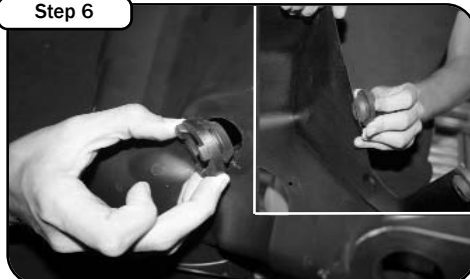
Step 3
 Disconnect the MAF sensor (1). Loosen the hose clamp on the air box(2), and unclip the upper portion of the air box(3).



Step 4
 Remove the upper portion of the air box and the factory air filter.



Step 5
 Remove the 10mm bolt on the side of the air box set aside for later use. Lift the lower air box up and out of the engine bay.



Step 6
 Transfer the rubber vibration mounts located on the bottom of the air box over to the new housing.



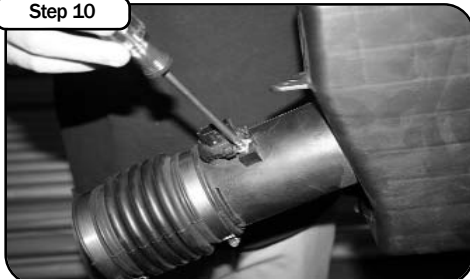
Step 7
 Place the rubber trim seal along the edge of the housing. Lower the housing into the engine bay secure housing with the bolt removed in step 5.



Step 8
 Place the coupler on to the intake tube. Do not tighten clamps at this time.



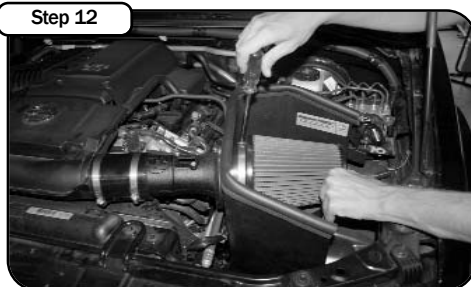
Step 9
 Slide the intake tube assembly into the housing. Secure the tube to the housing with the supplied M6 hardware. Tighten and secure the hose clamp.



Step 10
 Carefully remove the MAF sensor from the OEM air box lid.



Step 11
 Transfer the MAF sensor to the aFe intake tube. Secure with the supplied gaskets, spacers, and screws. Make sure you pay attention to the direction of the arrow on the MAF sensor.



Step 12
 Install the pre oiled air filter. Do not use any grease or oil. Secure with the provided clamp.



Step 13
 Place enclosed CARB EO sticker on a clean/smooth surface on or near the intake system. EO identification label is required in passing the Smog Check inspection. Your installation is now complete. Make sure you tighten all clamps and check all electrical connections. Re check periodically

Note: Filter Cleaning and Re-oiling: When cleaning your aFe filter, be sure to use only aFe's "Restore Kit" (aFe P/N: 90-50001 blue oil aerosol, or aFe P/N: 90-50501 blue squeeze bottle oil or aFe P/N: 90-50000 gold oil aerosol, or aFe P/N: 90-50500 gold squeeze oil).
 Filter Replacement: Magnum FLOW PN: 24-91034 (black w/blue media).