

WMMTC

AFE CONTROL



Part Name: Corvette C5/C6 Engine Mount Kit

Part Number: 450-401007-N

Objective:

The Pfadt motor mount kit will increase drivetrain efficiency, allowing your high performance car to push more constant power to the street or track. If you're a track racer or a street driver the Pfadt motor mounts will allow you to push more power. *This kit will transfer more vibration than stock at low RPMs*

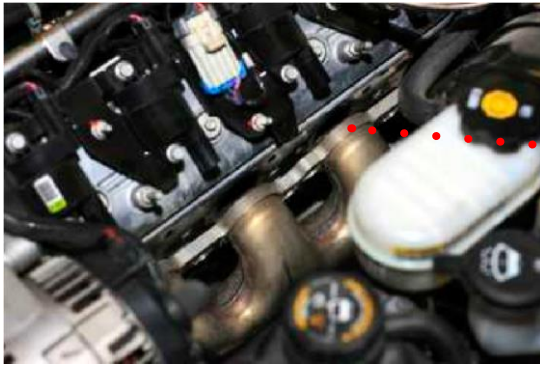
Time Needed:

5+ hours depending on mechanical skill.

Engine Work:

This part is dependent on which exhaust you have

1. Remove all spark plugs from engine



Picture on exhaust step must be

2. Unbolt both headers from engine

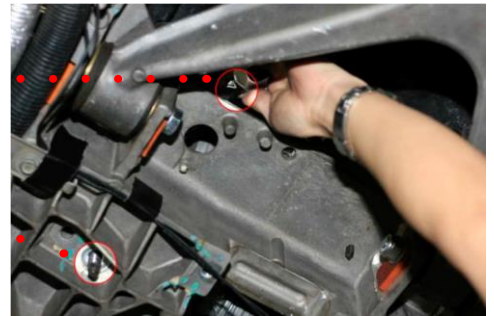
left shows removal of spark plugs and header away from the engine block. This completed for motor mount installation.

Under car:

1. Raise car on lift
2. Locate the 2 engine mount nuts located under the sub-frame. *(one on each side)*
3. Remove the 2 nuts and set aside. Be careful not to damage these as they will be used for the installation!



Pictures illustrate removal of motor mount nuts and access point for motor mount bolt.



4. Remove the brake line bracket from each side of vehicle by removing the single bolt.
5. Using a screw jack lift the engine as much as possible

~Take care not to damage the intake manifold

~If the headers are not unbolted make sure not to damage the exhaust against the tunnel plate.



Picture on left illustrates removal of the brake line bracket and 1 bolt
 ~Make sure the wood is only touching and supporting the engine, as this is the only part that needs to be lifted.

Picture on underside



left illustrates placement of wood on the of engine.

6. Remove the 4 subframe nuts (2 nuts per side)

~At this step it is necessary to remove the leaf springs from car!

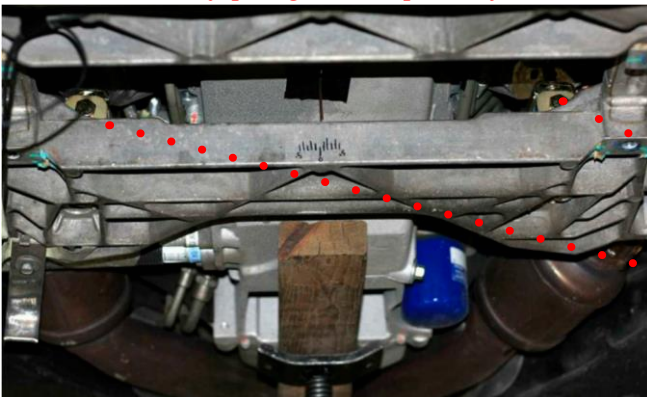


Picture on left shows the placement of the 4 sub frame bolts that must be removed. Once the bolts are removed the subframe sections may be pulled down for motor mount access.

Leaf Spring removal.

1. Once the car is in the air. Remove the 2 bolts per side of the leaf springs
2. Remove the 2 bolts holding the lower shock bracket in place.
3. Remove the 4 upper control arm bolts on the passenger or driver front side.

(This is the side the leafspring will be pulled from, note number and placement of alignment shims)



Picture on left shows the new Pfadt Motor mounts installed running parrallel to the motor. Make sure that the mounts are also facing upward in the same direction.

Finishing Assembly:

1. The subframe is not removed from the car, just covered enough to remove the old motor mounts.
Clearance is tight!
2. Once the subframe is lowered, remove the old motor mounts and install the new motor mounts making sure the bolts are running parallel to the engine.
3. Tighten the 4 subframe bolts, lower the engine and tighten the 4 motor mount nuts.
4. Reverse the order of everything else. *Check all work when done!*



191 Granite Street
Corona, CA 92879
951-493-7128
www.aFecontrol.com