

PERRIN

PERFORMANCE

2008-14 WRX/STI COLD AIR INTAKE

2014-01-22

Thank you for purchasing this PERRIN product for your car! Installation of this product should only be performed by persons experienced with installation of aftermarket performance parts and proper operation of high performance vehicles. If vehicle needs to be raised off the ground for installation, the installer must use proper jacks, jack-stands and/or a professional vehicle hoist for safety of the installer and to protect property. If the vehicle is lifted improperly, serious injury or death may occur! Please read through all instructions before performing any portion of installation. If you have any questions, please contact our tech department prior to starting installation. We can be reached in any of the following methods:

Email Tech@PERRINperformance.com
Instant Chat off the main page of www.PERRINperformance.com
Or simply call our tech team at 503-693-1702

GENERAL MODIFICATION NOTE

Modifications to any vehicle can change the handling and performance. As with any vehicle extreme care must be used to prevent loss of control or roll-over during sharp turns or abrupt maneuvers. Always wear seat belts, and drive safely, recognizing that reduced speeds and specialized driving techniques may be required. Failure to drive a vehicle safely may result in serious injury or death. Do not drive a vehicle unless you are familiar with its unique handling characteristics and are confident of your ability to maintain control under all driving conditions. Some modifications (and combinations of modifications) are not recommended and may not be permitted in your state or country. Consult the owner's manual, service manual, instructions accompanying these products, and local laws before purchasing and installing these modifications. You are responsible for the legality and safety of the vehicle you modify using these components.

SPECIAL NOTES:

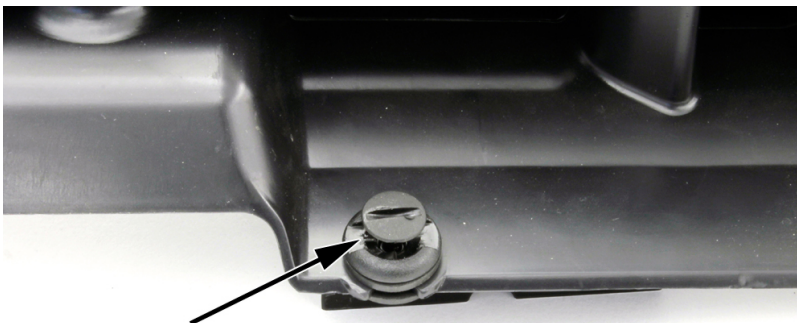
- The use of a factory service manual is highly recommended and can be purchased or downloaded online at <http://techinfo.subaru.com>.
- This PERRIN intake system is a performance product that can be used safely during mild weather conditions. During harsh and inclement weather conditions, you must return your vehicle to stock OEM air box and intake tract configuration. Failure to follow these instructions will void your warranty.
- We recommend that your filter should be cleaned at least every 20,000 miles, depending on local dust and pollutant levels. A special dry flow filter cleaning kit is available from our website and dealers. NOTE: Use of other cleaners and oils will damage filter and void warranty.

Parts Included with the PERRIN Cold Air Intake:

- (1) PERRIN Cold Air Intake Tube
- (1) 2.75"ID Dry Flow Air Filter
- (1) 2.75" Black Silicone Coupler
- (1) Cold Air Intake bracket
- (2) Size 312 T-Bolt clamps
- (2) M4x10mm screws
- (1) M6x20mm button head screw
- (3) M6 Fender Washer
- (1) M6 Nut
- (1) Zip Tie

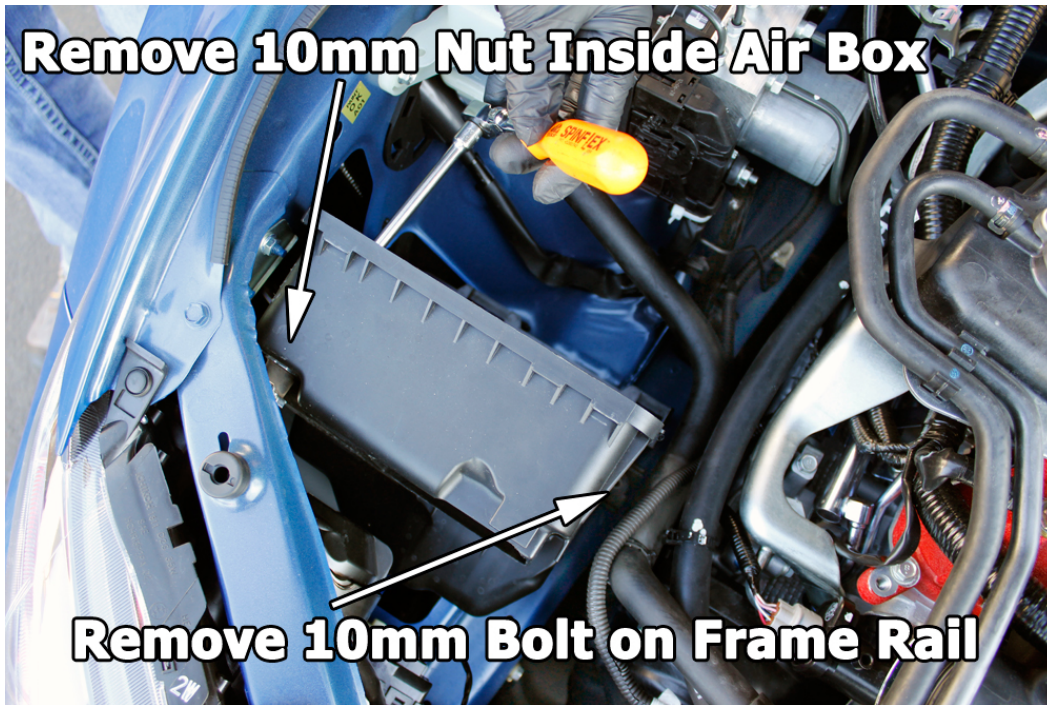
Installation

1. Disconnect negative terminal of vehicle battery. **NOTE: This will reset the ECU, so any custom ECU calibration may be lost and may need to be reflashed.**
2. Remove (2) plastic fasteners holding air scoop to car by turning 90 degrees with a flat head screwdriver or using panel popper tool.



**Use Flat Head Screw Driver
or Panel Popper Tool**

3. Loosen hose clamp securing rubber intake hose to turbo inlet pipe. Do this until hose clamp is completely loose around rubber hose.
4. Unplug MAF sensor, and flip (2) metal clips to free rear section of air box. Carefully remove rear section of air box, air filter and rubber hose from turbo inlet pipe. **NOTE: Take notice of two rubber hoses and MAF harness that are snapped into side of box. These need to be popped out of their clips before removing from car.**
5. Remove 10mm nut located inside of air box (as shown) and 10mm bolt securing lower section of air box to chassis.

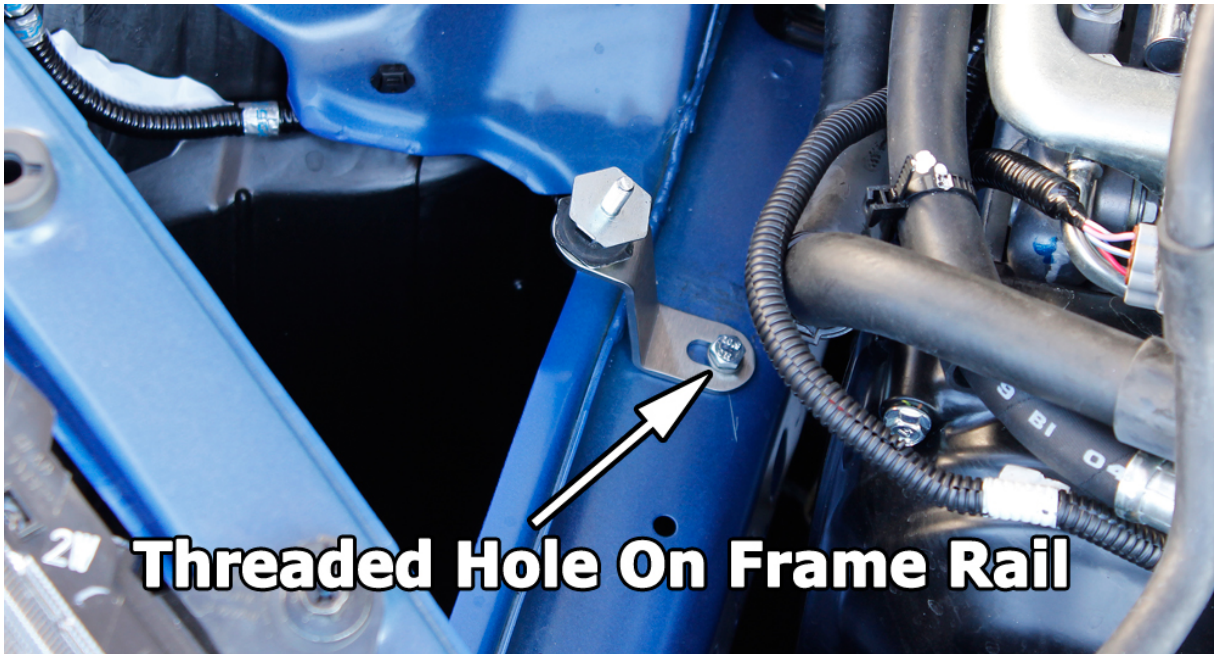


6. Remove front section of air box from vehicle.
7. Using a 10mm socket, remove (2) nuts securing upper air box mounting bracket and rubber mount. Remove bracket with rubber mount from chassis and using 10mm socket then remove nut securing rubber mount to bracket. This rubber mount will be used in next step.
8. Install rubber mount to supplied bracket as shown. Make sure that (2) 3/8" washers go onto stepped side of mount before mount goes through round hole in bracket. Secure mount to bracket using supplied M6 fender washer and nut. If installed properly, rubber mount will not rotate when nut is tight.

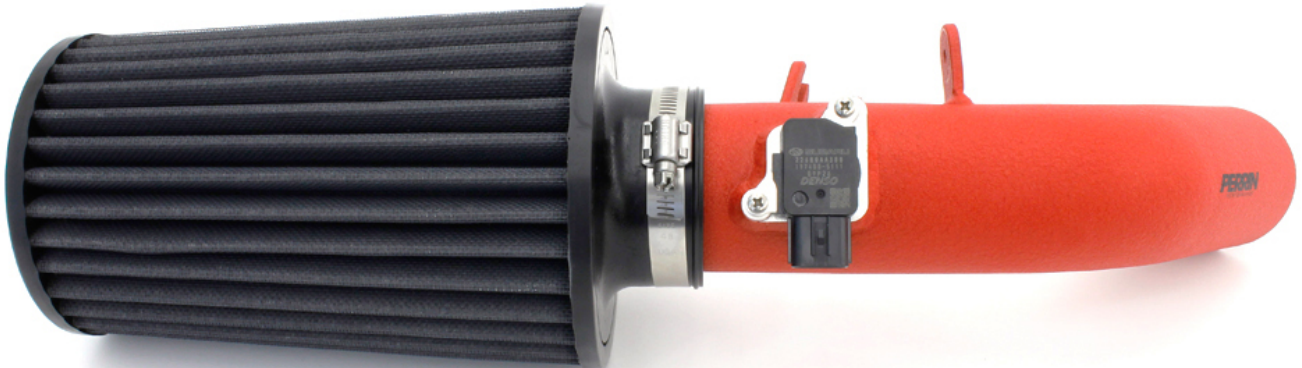
(2) 3/8" Washers



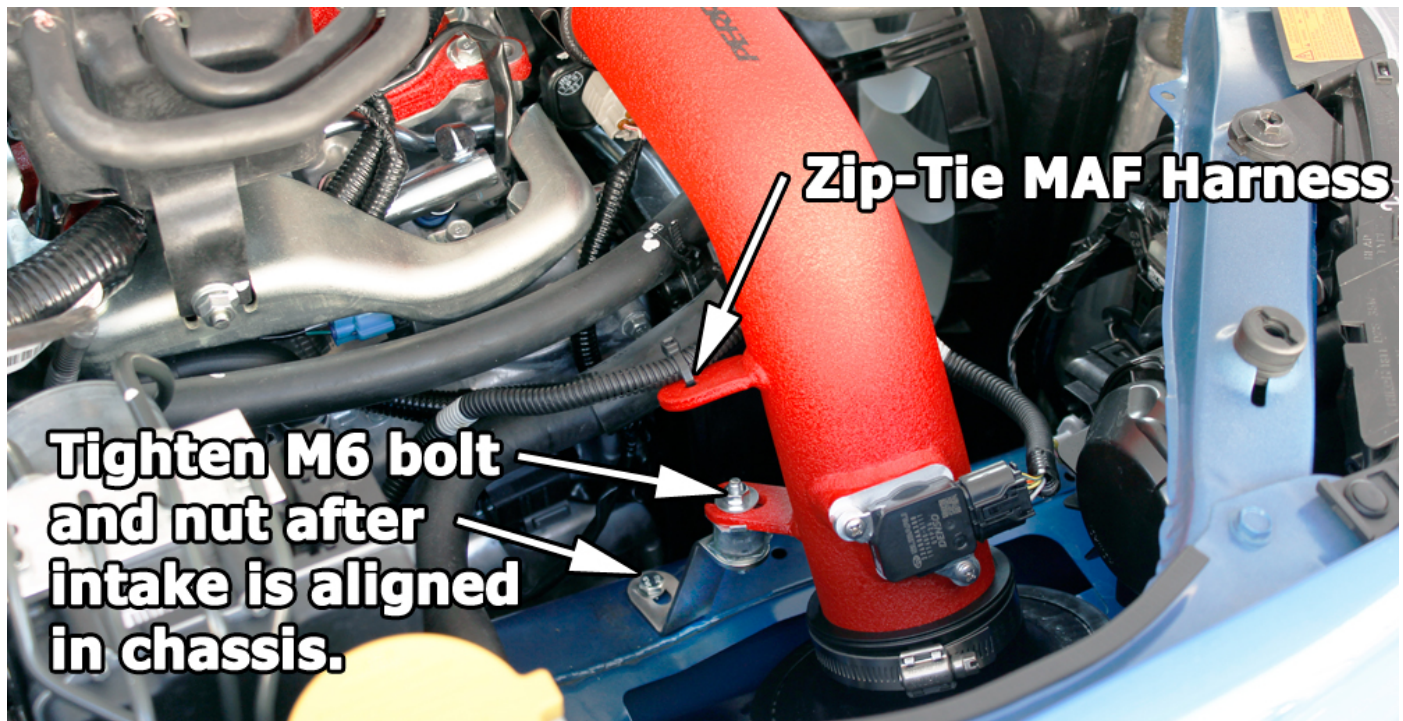
9. Install supplied bracket (with rubber mount) to threaded hole in frame rail and secure using supplied M6 screw and fender washer. Leave loose until air intake pipe is mounted.



10. Install supplied silicone coupler to turbo inlet hose making sure to push coupler at least .50" past the bump on the end.
11. Install (2) supplied T-bolt clamps over coupler and leave loose until final step. **NOTE: Removing nut from clamps will aid in getting over thicker portion of coupler.**
12. Remove MAF sensor from factory air box, place into PERRIN intake tube and secure using supplied M4 screws.
13. Install air filter to end of tube with black plastic air straightener glue in one end.



14. Install intake tube into coupler and over rubber mount.
15. Secure intake tube to rubber mount using supplied M6 fender washer and nut.
16. Adjust intake tube so filter and other parts are at least 3/8" away from chassis and other immovable objects.
17. Tighten 10mm bolt securing bracket to chassis. Tighten 10mm nut securing rubber mount to intake tube.
18. Adjust T-bolt clamps and tighten around silicone coupler.



19. Re-install plug/harness to MAF sensor making sure that small tab locks into place.
20. Using supplied zip tie, secure MAF's wire harness to small tab on intake pipe.
21. Reconnect negative terminal on battery, and attempt to start the car. The engine will crank over a few extra times more than normal, the first time you start it. This is normal after reconnecting the battery.

CARB Sticker Placement

1. The C.A.R.B. exemption sticker (included) must be visible under the hood so that an emission inspector can see it when the vehicle is required to be tested for emissions.

Questions, Comments and Suggestions Contact: Tech@PERRINperformance.com
Visit Our Website for Instant Chat Options at www.PERRINperformance.com
Call Our Tech Team at 503-693-1702