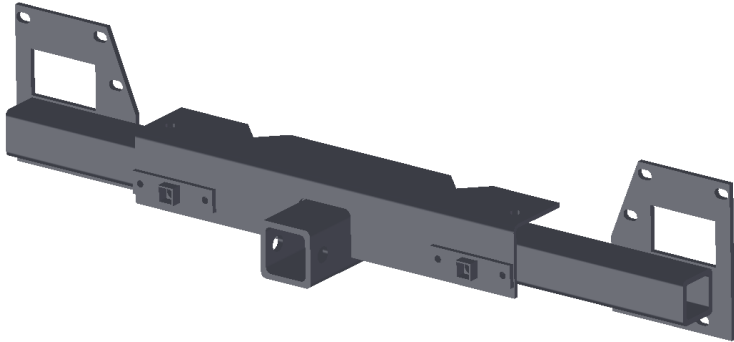


## **2007+ DODGE / MERCEDES SPRINTER FRONT RECEIVER** **INSTALL INSTRUCTIONS**



### **Please read before beginning**

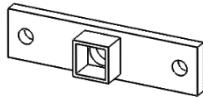
- *Stainless steel hardware may bind together when tightening—It is recommended that you apply an anti-seize assembly lubricant to the threads of each bolt before assembly*
- *This installation requires two people*

### **Required tools**

- *Standard wrench set*
- *Torx (6-point star head) wrench set*
- *Flat head screwdriver*
- *Hammer*
- *Putty knife*
- *Razor or box cutter*
- *Drill, with 3/8" drill bit*

**Preassembled**

70008 – ¼-20 SS Nylock Nut.....	4
70009 – ¼” SS Flat Washer.....	8
70060 – ¼-20 x 1” Button Head Cap Screw .....	4



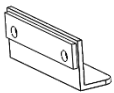
**X2**  
Front Receiver  
Spacers

**Installation Hardware**

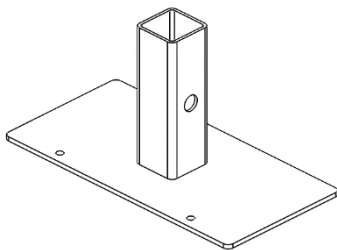
**Quantity**

**PRE-KIT 350456**

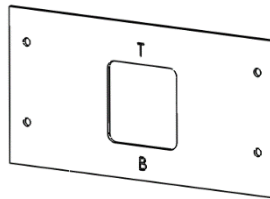
70020 – 5/16”ID x ¾” OD Flat Washer, SS.....	8
70024 – 3/8-16 Nylock Nut.....	5
70028 – 3/8” SS Flat Washer.....	10
70029 – 3/8-16 x 1 ¼” Hex Head Bolt.....	5
70056 – 7/16-14 Nylock Nut, Grade 8 .....	2
70057 – 7/16” Washer, Zinc Plated Steel .....	4
70101 – M8-1.25 Nut, Zinc.....	8
70111 – 5/16” Washer, Split Lock, Zinc Plated Steel .....	8
70124 – M8-1.25 x 40mm Fully Threaded Hex Bolt, Grade 10.9 .....	8
70185 – 7/16-14 x 4 ½” Hex Head Bolt, Grade 8.....	2
70258 – Locking Lynch Pin for License Plate Holder .....	1
Antiseize Packet, 2g.....	1



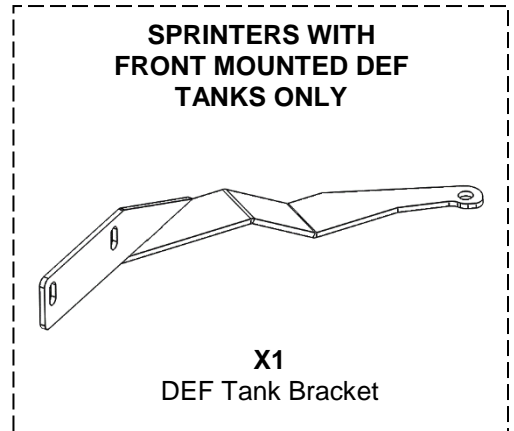
**X2**  
Steel Angle  
Brackets



**X1**  
License Plate  
Holder

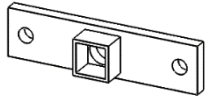


**X1**  
Cutting Template



## Installation Instructions

1. If you are installing your Front Receiver on a '07-'13 Sprinter, you'll need to remove the 2 spacer assemblies by unbolting them from the front receiver. If you own a '14+ Sprinter, proceed with these spacers attached.



**\*Remove  
for '07-'13  
Sprinters**

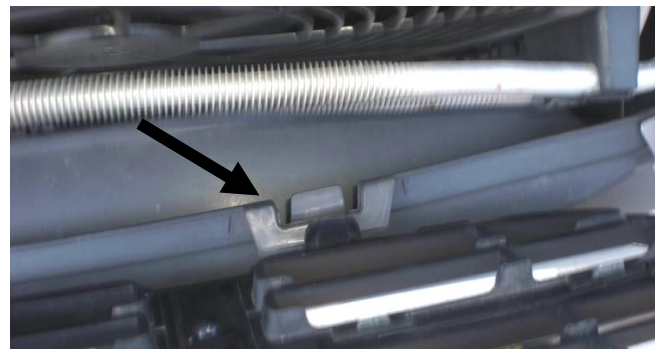
2. To remove the stock bumper, begin by propping up the hood in order to access the grill
3. Remove the Two torx-head bolts and 4 Plastic Pop out clips holding the grill on (indicated by the arrows in **Figure 1**) – do not discard these, you will need them to put the grill back on
4. Once the bolts have been removed, the plastic clips holding the grill on must be released—pull the grill towards you gently to allow some space to put your hand behind it and reach the clips
  - To release the two large clips on the sides of the grill seen in **Figure 2**, squeeze the top and bottom together (indicated by arrows) and push down—be careful, these break easily
  - To release the three bottom clips holding the grill to the bumper cover as seen in **Figure 3**, push down on the tab sticking out from the grill while pulling the grill gently towards you—these
  - The use of gloves is strongly recommended here, as the metal heat exchanger tubes behind the grill are fairly sharp
5. Remove the plastic fasteners holding the bumper cover to the fender liners—there are three inside the fender and two underneath the front edge of the bumper cover on each side as seen in the photos below—in order to remove them, pry up on the center part of the fastener with a flat head screwdriver until it pops up, then the entire fastener may be removed by hand (see **Figure 4**, next page)



**Figure 1. Stock grill hardware**



**Figure 1. Grill retaining clips**



**Figure 2. Lower grill retaining clips (top view)**



**Figure 3.** (Clockwise from top left) Plastic fastener location in fender well; Plastic fastener locations under leading edge of bumper; Plastic fastener closed (left) and open (right)

6. Remove the 2 Torx-head bolts at the inner corners of the headlights (**Figure 5**)



**Figure 4.** Headlight trim piece torx bolts

7. Now remove the plate cover shown in **Figure 6**; there are four bolts holding it on—there may be a sensor attached to it; make sure to disconnect the wiring connector.



8. Once the plate cover is removed, the two bumper cover mounting bolts are exposed (see **Figure 6**); these may be removed with a 13mm wrench—There are also two large torx-head bolts on top which must be removed, indicated by arrows below.



**Figure 6.** Plate cover (top) and plate cover removed (bottom) showing bumper cover fasteners

9. Now simply slide the bumper cover forward to remove it—if resistance is encountered, stop and check for fasteners still attached; the bumper should slide off easily.
10. Now the bumper should be exposed (**Figure 7**); there are four bolts on each side which must be removed, use a 13mm wrench—There may be some frame sealant stuck on the bolt heads; Use a box cutter to scrape it off in order to fit a wrench on the head of the bolt



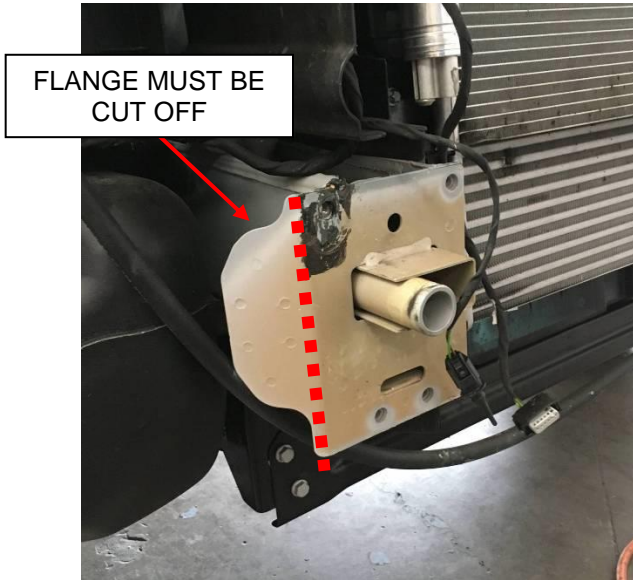
**Figure 7.** Stock bumper, passenger side

11. Once the bolts are removed, the bumper usually is stuck to the frame of the vehicle because of the frame sealant; In order to release the bumper, gently tap on the seam between the bumper and the frame using a putty knife and hammer as shown in **Figure 8** below—Make sure there is someone supporting the bumper as you do this so that it does not fall and cause injury once released; once the seal is broken between the bumper and frame, pull the bumper forward on that side—the leverage should release the seal on the opposite side as well.



**Figure 8.** Releasing stock bumper with hammer and putty knife

12. If your van has a flange extending out from the side of the frame horn (**Figure 9**), cut it off so that the edge runs perpendicular to the ground. The frame, after cutting off the flange, should look like the frame in **Figure 10**.

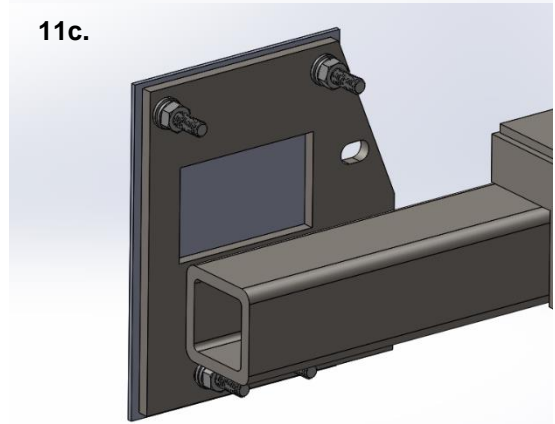
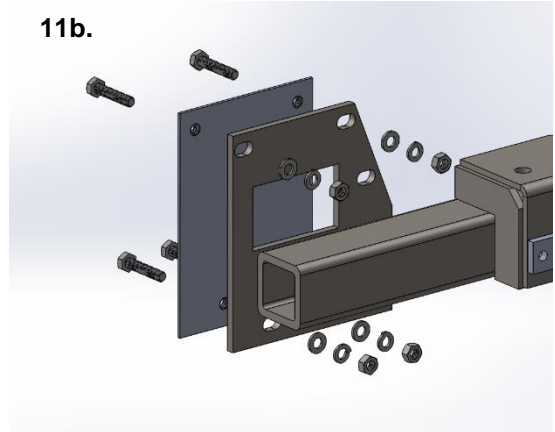
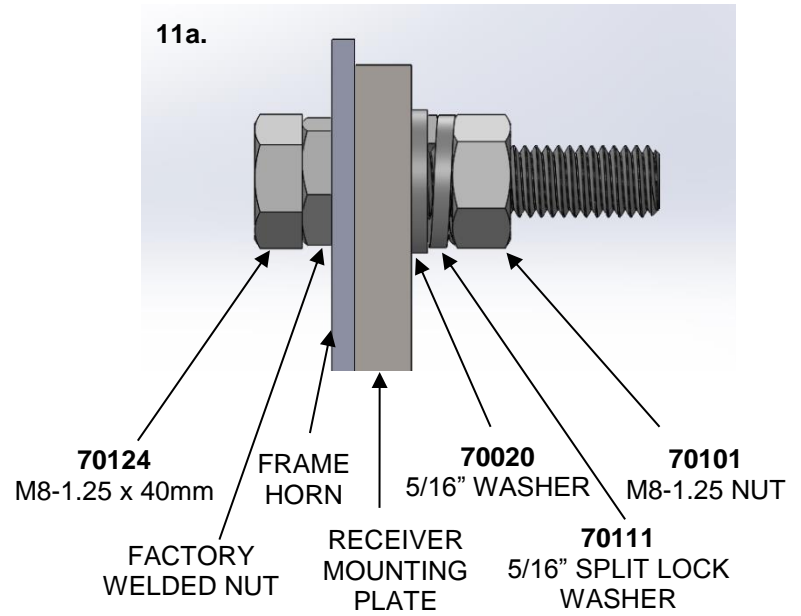


**Figure 9.** Frame with flange.



**Figure 10.** Frame profile after cutting.

13. Line up the receiver mounting plates on the frame horns and insert four M8-1.25 x 40mm bolts through the frame so that the aftermarket hitch can slide onto the vehicle (see **Figures 11a-c**).



**Figure 11.** Top to Bottom (a) Detailed view of hardware used to mount receiver to frame mounts (b) exploded view of hardware mounting for receiver (c) final assembly after bolts, washers and nuts are assembled and tightened down.

**\*\*\*If your vehicle has a front mounted DEF Tank, follow step 13 to install the DEF Tank bracket. If you don't have a DEF Tank or it is located someplace else, skip to step 14. \*\*\***

14. With the aftermarket receiver installed, attach the support bracket to the DEF tank bracket ('14+ Sprinters only), and the top 2 bolts on the passenger side of the frame (**Figure 12**).



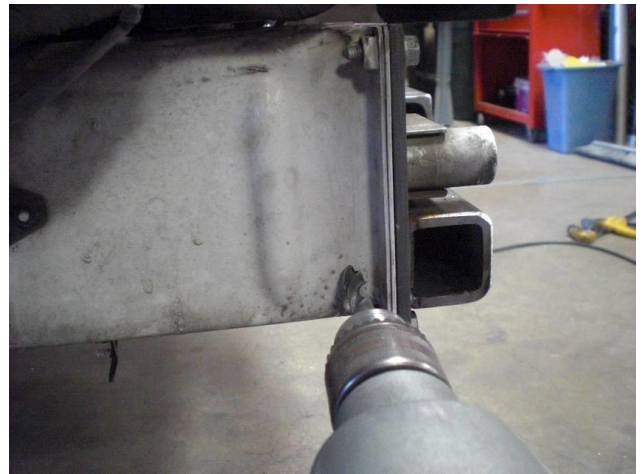
**Figure 12.** DEF Tank Bracket placement

15. Attach the provided 2" X 1" angle brackets to the backside of the receiver mounting plates. The 1" side should butt against the frame. Use the provided 3/8" hardware to fasten together (**Figure 13**)



**Figure 13.** Attach the 2" X 1" angle brackets to the receiver mounting plates (this is the passenger side)

16. Drill two equally spaced 7/16" holes through the frame using the angle bracket holes as a guide. The stock screws used to fasten the chrome license plate holder will be used to hold the cutting template (see step 17), as well as mount the angle to the frame (**Figure 14**)



**Figure 14.** Drill 2 equally spaced 7/16" Holes through the frame and angle brackets

17. The cutting template is marked with a "T" and "B" for you to determine which side is top and which side is bottom. Use the stock license plate screws to hold the cutting template to the front of the plastic bumper.

*NOTE: You do not need to tighten the bolts very much, they are just used to hold the cutting template in place so you can trace the cut out.*

18. Mark and cut your stock bumper.
19. It is now a good idea to place the plastic bumper over the receiver to make sure the hole you cut lines up. You may need to open the cut out by 1/8"-1/4" for ease of installation.
20. Align the chrome license plate holder over the plastic bumper. From behind trace the square that was cut out of the plastic bumper onto the license plate holder.
21. Cut the square out of the license plate holder. It is best to use a cutoff wheel for this step. Jigsaws can cause the chrome to flake and peel.
22. You can now put the vehicle stock screws through the angle and frame and tighten them down.
23. Re-install the factory bumper using the installation instructions in reverse.

*Note: Depending on what year your vehicle was manufactured, you may have extra hardware left after installing the front receiver.*