

LADDER INSTALLATION INSTRUCTIONS

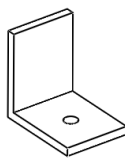
Mercedes Sprinter 07+ Track Mount Ladder



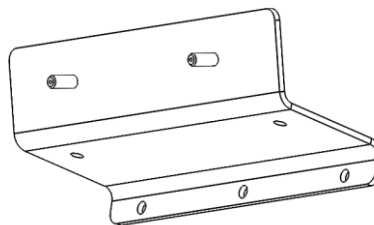
Please read before beginning

- *Stainless Steel nuts and bolts may bind permanently together if installed incorrectly; to avoid this it is recommended to apply a small amount of lubricant to bolt threads before installing (wax, never cease, etc.)*
- *The ladder is designed to fit in front of the rear wheel of the van.*

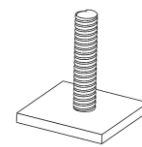
Included Parts/Subassemblies



x2
"L" Bracket



x1
Lower Attachment
Bracket



x2
Gutter Bracket

Included Hardware

Quantity

PRE-KIT 350452

- | | |
|---|----|
| • 70008 – ¼-20 Nylock Nuts Stainless Steel | 7 |
| • 70009 – ¼" x 5/8" Washer Stainless Steel (.03" Thick) | 10 |
| • 70019 – 5/16-18 Nylock Nuts Stainless Steel | 2 |
| • 70020 – 5/16" Washer Stainless Steel (.03" Thick) | 2 |
| • 70060 – ¼-20 x 1" Button Head Cap Screw Stainless Steel | 3 |
| • 70201 – 5/16-16 x 1" Socket Cap Screw | 2 |
| • 70246 – Antiseize Packet, 2g | 1 |

Installation Instructions

*NOTE: If you have purchased an accompanying pair of nerf bars, it is easier to install the ladder **first**.*

NOTE: Factory or aftermarket roof tracks must be installed before the ladder.

Upper Attachment Assembly:

1. Slide both gutter brackets into the roof gutter from the rear of the vehicle with studs pointing upwards.
2. Install the “L” brackets onto gutter brackets using the pre-drilled holes and thread on washer and nut. Leave the “L” brackets loose enough to slide back and forth (see Figure 1).



Figure 1: Brackets installed on gutter

3. Position the ladder where you would like it to sit on the vehicle.
4. Clamp the top of the ladder to the L-brackets using C-clamps or spring clips with “L” brackets on inside face of ladder (see Figure 2).



Figure 2: Ladder installed on roof gutter

5. Using a 5/16” drill bit, drill through “L” bracket using the ladder as a template on both brackets.
6. Install the 5/16” bolts, washers, and nuts and tighten by hand—do not torque down bolts yet.

Bottom Bracket Assembly:

7. With the ladder attached at the top, locate the desired position of the lower attachment bracket. Ensure the ladder is straight compared to the vehicle before finalizing lower bracket placement.

8. Hold the lower attachment bracket up to the vehicle body using C-clamps or spring clips. Be sure to align the bottom three holes with the pinch weld.



Figure 3: Lower Attachment Installation

9. Using a 1/4” drill bit, make three holes through the pinch weld using the bracket as a template for alignment.
10. Install the 1/4” cap screws, washers, and nuts into the drilled holes and tighten.
11. Place ladder against lower attachment bracket making sure the bottom of the ladder aligns over the threaded studs.
12. Install 1/4” washers and nuts onto the threaded studs.
13. While applying downward pressure to the ladder, tighten the 1/4”-20 nuts fixing the ladder in place.



Figure 4: Lower Attachment Assembly

14. Visually inspect the position of the ladder—if satisfied, tighten down all the bolts to at least 10 ft-lbs. of torque.
15. Check all fasteners for fitment after 50 miles of driving, and every 1000 miles afterwards. Enjoy!