

INSTALLATION GUIDE



Cold Air Intake

2011–2016 Ford 6.7L Powerstroke

(Install Time: 1 hour)





DISCLAIMER

1) By installing this product onto your vehicle, you assume all risk and liability associated with its use.

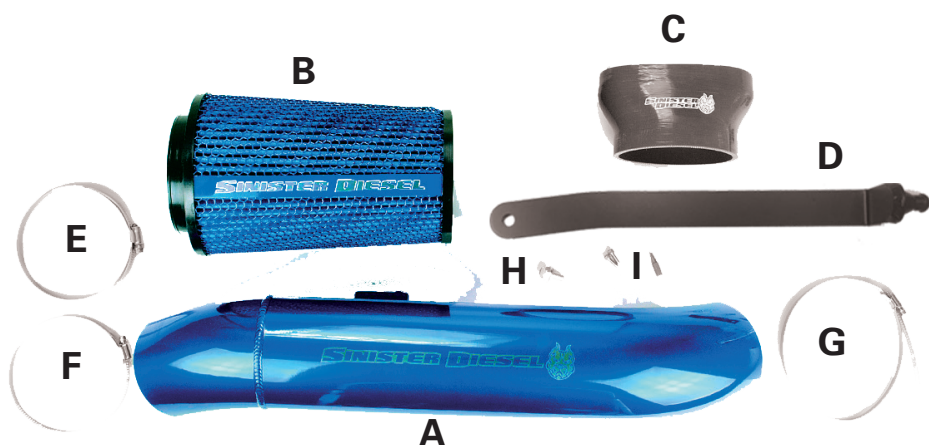
2) It is your responsibility to make sure your vehicle complies with all federal, state, and local emissions laws. Federal and many state and local laws prohibit the removal, modification or rendering in-operative of any part of the design affecting emissions or safety on motor vehicles used on a public street or highway. Violation may result in a fine of up to \$32,500 per vehicle (or possibly higher depending on changes in the law). All civil penalties and fines for removing your vehicle's emissions equipment are the sole responsibility of the end user.

3) Due to its high performance nature, this product may void vehicle manufacturer's warranty.

4) Sinister Mfg Company, Inc. is not responsible for misuse of its products. By installing this product, you release Sinister Mfg Company, Inc. of any and all liability associated with its use.

5) Depending on where you live, restrictions may apply. Check all applicable laws before installing or using!

6) The purchaser and end user releases, indemnifies, discharges and holds harmless Sinister Mfg Company, Inc. from any and all claims, damages, causes of action, injuries, or expenses resulting from or relating to the use or installation of this product that is in violation of the terms and conditions on this page, the product disclaimer, and/or the product installation instructions. Sinister Mfg Company, Inc. will not be liable for any direct, indirect, consequential, punitive, statutory, or incidental damages or fines caused by the use or installation of this product.



PART:	DESCRIPTION:	QTY:
A	Intake Tube	1
B	Filter	1
C	Intake Boot	1
D	Support Bracket	1
E	Small Boot Clamp	1
F	Large Boot Clamp	1
G	Filter Clamp	1
H	M8 Flanged Hex Head Bolt	1
I	8-32 Socket Head Cap Screw	2

If you have any issues regarding this product, or if it arrives with missing parts please contact Sinister Diesel directly at (888) 966-6543. Thank you.

IMPORTANT: READ ALL INSTRUCTIONS PRIOR TO INSTALL. Prior to installation, please compare the parts that you have received with the bill of materials provided on this page to assure that you have all the parts necessary for the installation.



CAUTION !!! Never work on a hot vehicle. Serious injury in the form of burns can result if the vehicle has been in use. Allow vehicle to cool prior to installation. Always wear eye protection when working on or under any vehicle.

IMPORTANT: For your safety, we recommend disconnecting any negative battery terminals whenever working on any vehicle. Installation of the Sinister Diesel Cold Air Intake requires removal of the plumbing to the turbo intake. Use caution not to get any dust, debris, or leave tools where they may enter the system.

1 Disconnect negative terminals on both batteries.

2 Using a 7mm nut driver, loosen clamp securing intake tube to air box. (Image 1)



IMAGE 1

3 Locate and disconnect MAF wiring. Once disconnected, remove air box by pulling straight up. (Image 2)

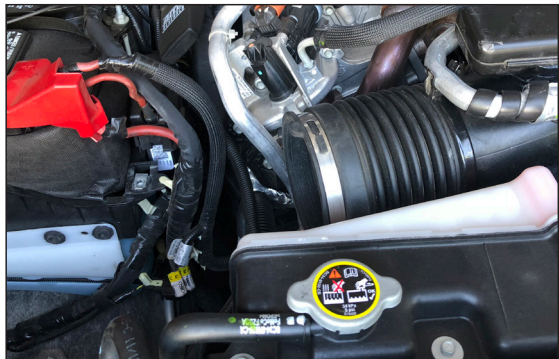


IMAGE 2

4 Using a 10mm & 7mm socket, remove intake tube. (Image 3)

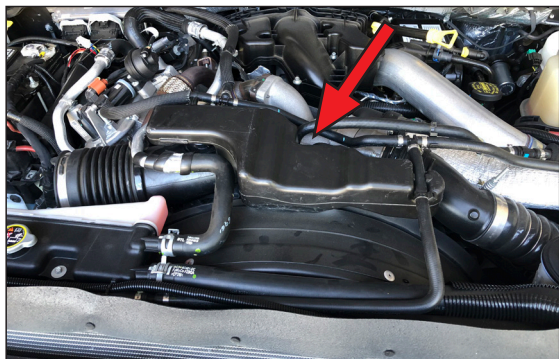


IMAGE 3

5 With airbox and tube removed, clean turbo inlet. (Image 4)

6 Install new intake boot (Item C) and loosely install clamps (Items E & F). (Image 5)

7 Transfer MAF sensor from original intake box, and install into the new Sinister intake tube. (Item I)

8 Loosely install support bracket (Items D & H) to intake tube (Item A). Line tube up and insert end into boot end. Line up support bracket in lower grommet and push in. Plug in the MAF connector. (Image 6)

9 Line up and install new air filter (Items B & G). (Image 7)

10 Now that everything is installed, start at the engine, tighten the clamps, then using a 13mm wrench, tighten the support bracket bolt.

11 Reconnect both batteries.

12 Start truck and enjoy your new Sinister Diesel Cold Air Intake!



IMAGE 4



IMAGE 5

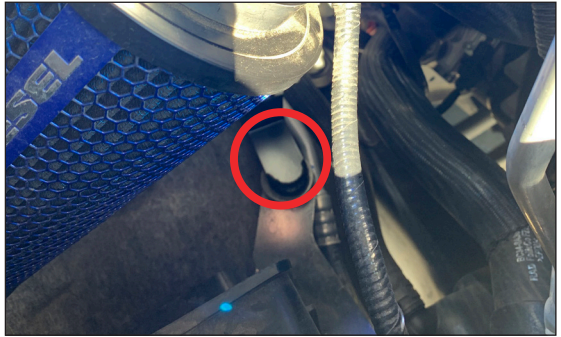


IMAGE 6



IMAGE 7

* E.O. identification label is required in passing the Smog Check inspection. The E.O. identification label must be placed on or near the device in the engine compartment.







#1 IN PERFORMANCE PARTS & KITS

2025 OPPORTUNITY DR. ROSEVILLE, CA 95678 SINISTERDIESEL.COM 877.692.4110