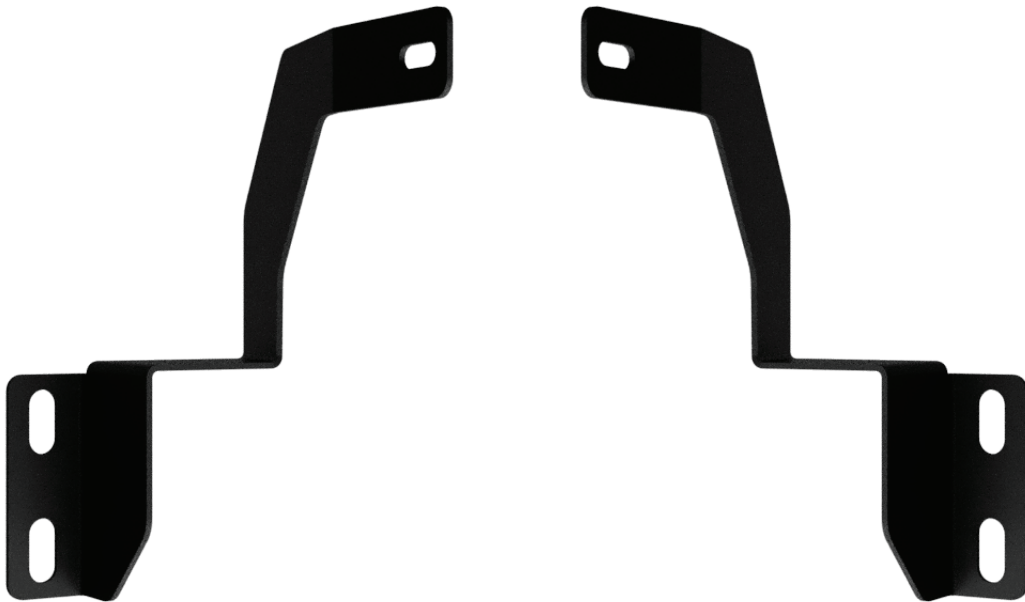


# ***Heretic***

*BEYOND LUMENS*

**Toyota  
Tacoma (2016-2022)  
30" Behind The Grill Kit**



***Heretic***

1168 West 500 North Suite 500  
Centerville UT, 84014  
801-725-4824  
Support@hereticstudio.com

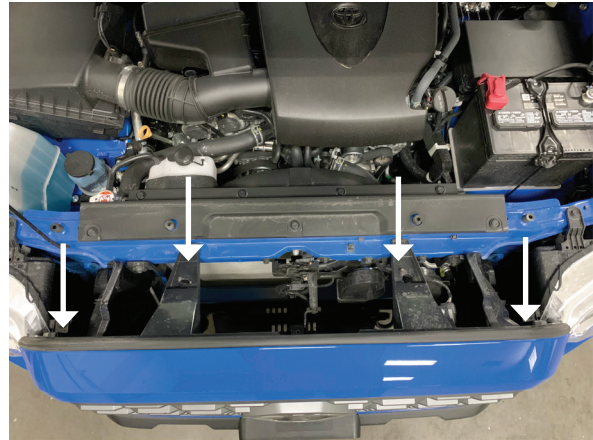
# Heretic

BEYOND LUMENS

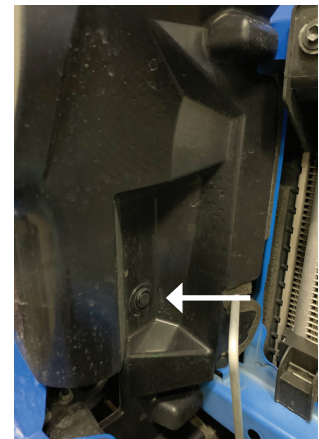
## Tools Needed for install:

Basic tool set

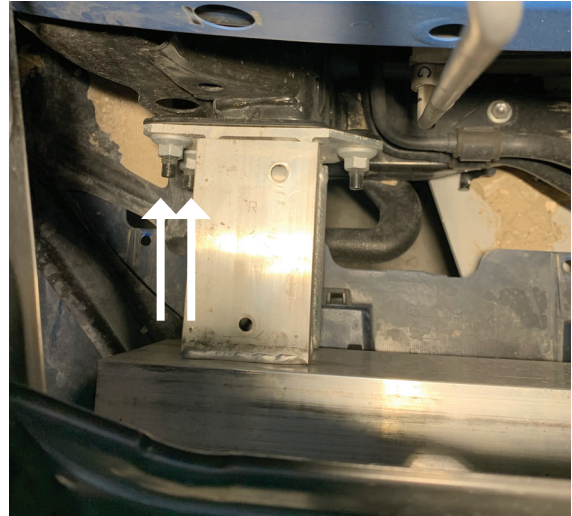
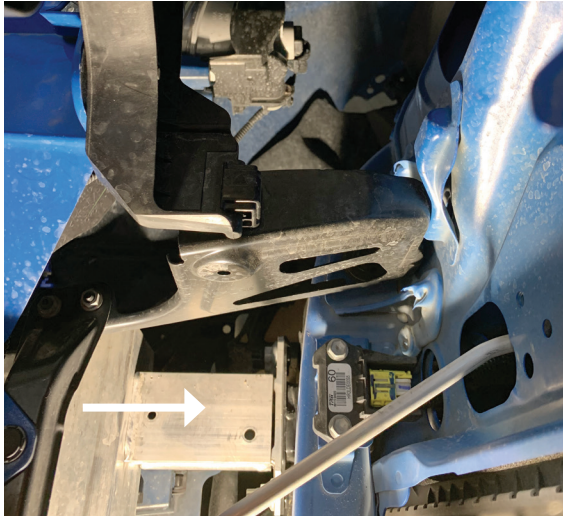
**Step 1:** Pop the hood and unhook the negative terminal on the battery to prevent accidental short circuits or fault codes from unplugging electrical components. Locate the two 10mm/Philips screws and two plastic retaining clips holding on the grill. Remove the two screws and the two plastic retaining clips.



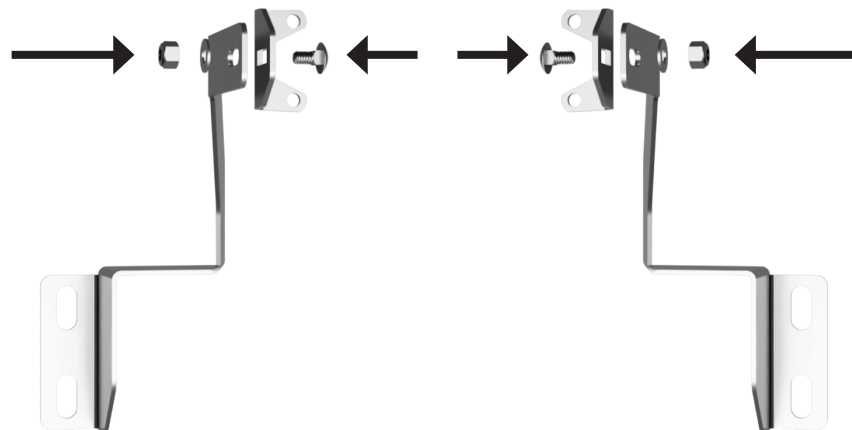
**Step 2:** To release the grill, pull the grill directly away from the front of the vehicle. Once the grill is removed, place it in a safe location. Locate the plastic retainer clip on the plastic splash guards. Remove the retainer clip and then remove the splash guard on each side.



**Step 3:** Locate the factory frame bolts on the outside edge of the frame rails. These bolts will need to be removed. To remove the bolts use a 14mm socket wrench. They are usually very tight, therefore we recommend using a tool with a long handle.



**Step 4:** Assemble the brackets. Due to the tight spacing behind the grill we recommend attaching the light bar "wings" to the bracket before they are installed into the vehicle. The first step in the process is to remove the "L" shaped bracket from the "wing" and remove the bracket from the light bar using a 4mm Allen Wrench on the M6 button head screws. Next, using the hardware that came with the light bar bracket, install the "wings" onto the behind the grill bracket as shown below. Leave the "wings" slightly loose, they will get tightened later on. Before moving on to the next step, Put the four M6 button head screws in a safe place, they will be reused when installing the bar.



**Step 5:** Install the “behind the grill light bar” brackets and the splash guards on to the frame studs. This can be done by holding the splash guard in the orientation that it would normally be in while installed in the car. Next place the corresponding bracket on the inner wall (towards the center of the vehicle) with the splash guard resting on the flat part of the bracket. Then, with a little love, work the bracket and splash guard in to place. Once the brackets are installed tighten the 14mm nuts until they are almost tight, these nuts will adjust the height of the bar. With the brackets almost fully installed, install the light bar back into the “wing” brackets using a 4mm Allen Wrench. Next, Adjust the angle and height. Once the desired angle is achieved torque all of the loose bolts and nuts tight.

**Step 6:** With the light bar installed, route the wiring away from any hot or moving parts and install the switch in the desired location. Connect the harness to the battery and test functionality with the switch. Once this process is complete zip-tie the wiring and begin re-installing the factory components in reverse order.



**Your install is now complete! Thanks for choosing Heretic!**



**@hereticstudio**

***Heretic***  
*BEYOND LUMENS*

***Heretic***

1168 West 500 North Suite 500  
Centerville UT, 84014  
801-725-4824  
Support@hereticstudio.com