



SHORT FRONT BUMPER WITH WINCH INSTALLATION MANUAL



For technical support , please write us to:
info@afxmotorsports.com or call us at:
Ph. 956-242-6521

HAVE FUN AND A SAFE RIDE!



www.afxmotorsports.com
4610 Modern Lane, Laredo, TX 78041 Ph. 956-242-6521

THIS PRODUCT IS FOR OFF ROAD USE ONLY

POLARIS RZR 1000XP/1000XP TURBO S

DEF060

THANK YOU!

FOR PURCHASING AT AFX MOTORSPORTS



STEEL FRONT BUMPER WITH WINCH FOR POLARIS RZR 1000XP/100XP TURBO S

HOW TO INSTALL

Pieces included:



Front Bumper



Hardware "A"



Hardware "B"

- (5x) 5/16" x 1" Bolts
- (4x) 5/16" Security nuts
- (1x) 5/16" Lock Washer
- (1x) 5/16" Flat Washer
- (4x) 3/8" x 1" Bolts
- (2x) 3/8" Lock Washer
- (2x) 3/8" Flat Washer
- (2x) 3/8" nuts

Tools needed (Not included):

- 5/32" Allen Key.
- 7/16" or 14mm Combination Wrench.

Liability Statement

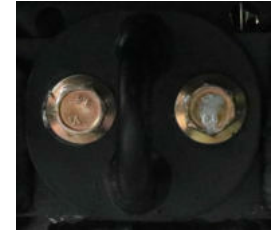
AFX Motorsports products are designed to best fit user's ATV/UTV under stock conditions. Adding, modifying, or fabricating any factory or aftermarket parts will void any warranty provided by AFX Motorsports and is not recommended. AFX Motorsports products could interfere with other aftermarket accessories. If user has aftermarket products on machine, contact AFX Motorsports to verify that they will work together. Although AFX Motorsports has thousands of satisfied customers, user should be aware that installing bumpers, rock sliders, spare tire carriers, etc. will change the ride of machine and may increase maintenance and part wear. Operating any off-road machine while, or after, consuming alcohol and/or drugs increases risk of bodily harm or death. No warranty or representation is made as to this product's ability to protect user from severe injury or death. AFX Motorsports urges operators and occupants to wear a helmet and appropriate riding gear at all times. By purchasing and installing AFX Motorsports products, user agrees that should damages occur, AFX Motorsports will not be held responsible for loss of time, use, labor fees, replacement parts, or freight charges. AFX Motorsports, nor any 3rd party, will not be held responsible for any direct, indirect, incidental, special, or consequential damages that result from any product purchased from AFX Motorsports. The total liability of seller to user for all damages, losses, and causes of action, if any, shall not exceed the total purchase price paid for the product that gave rise to the claim. AFX Motorsports will warranty only parts provided by AFX Motorsports. Any damage or problems with OEM housings, bearings, seals, or other manufacturers' products will not be covered by AFX Motorsports. AFX Motorsports parts and products are not warranted if item was not installed properly, misused, or modified.

7 To finish with the installation tighten all the screws and place the front plastic that was previously removed

* For safety tighten all the screws.
Now you have completed the installation.

*Note: You need to have the winch assembled before the installation.

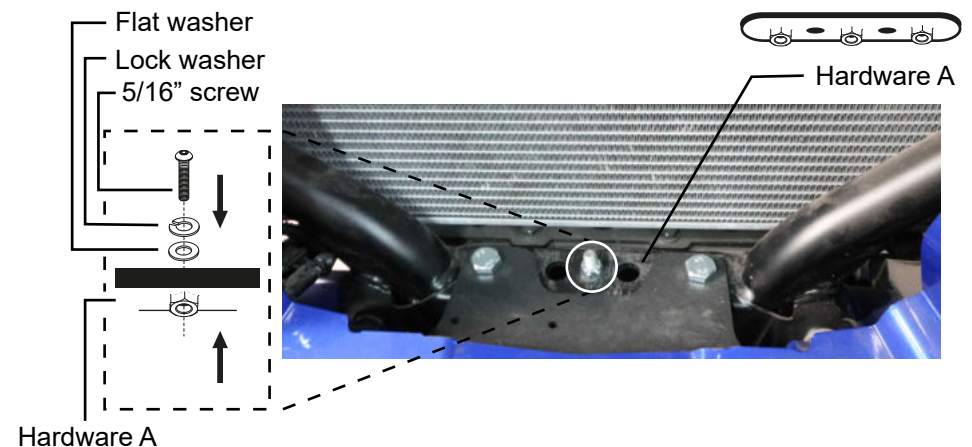
*Just in case that the RZR has this hardware, remove it and keep it.



1 Remove the front plastic of the RZR starting by the tabs.

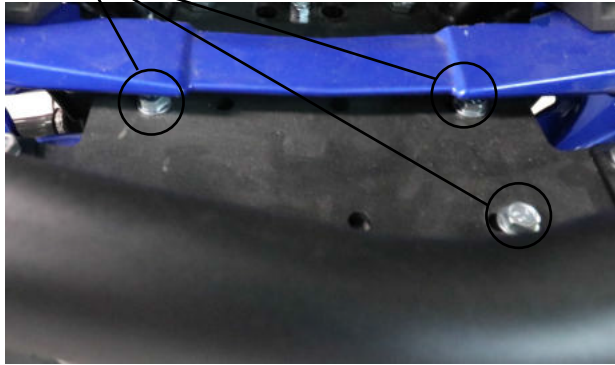


2 Place the hardware "A" over the front structure of the RZR, use a 5/16" screw with one flat washer and one lock washer. (As it is shown in the image).



3 Install the winch to the hardware “B” with the 4 original screws of the winch (as it is shown in the image).

Original winch screw



4 Mount the hardware “B” with the winch previously installed and use two 3/8 x 1” screws with lock washer (as it is shown in the image).

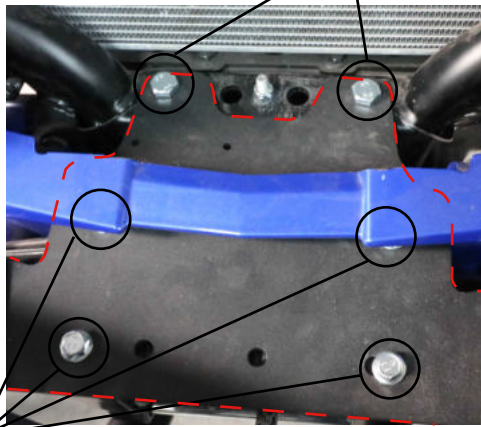
Hardware “B” perpendicular to the front structure

Hardware “B”

Winch



3/8 x 1” screw

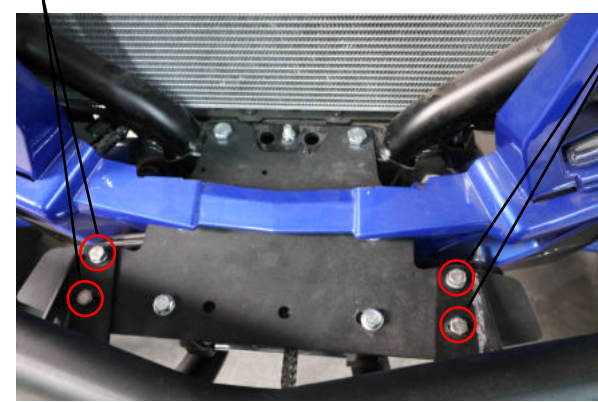


Original winch screw

5 Place the bumper over the hardware “B” aligning the 4 upper perforations and use four 5/16 x 1” screws with nut.

5/16x 1” screw

5/16x 1” screw



6 Align the two lower perforation with the structure of the RZR, place the original hardware that was previously removed and use two 3/8 x 1” screw with flat washer and nut.

3/8 x 1” screw

