

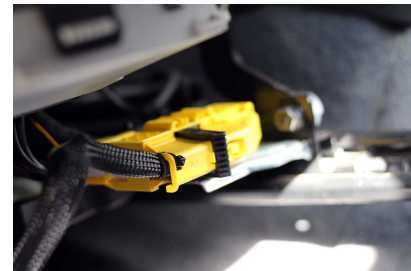


BMW E92 M3 Roll Bar Installation Instructions

Tools needed: Electric drill, 9/16" wrench & socket, ratchet, 13/32" drill bit, T20 and T50 Torx drivers

Step One (optional, but makes installation easier): Remove Front Driver Seat

- Adjust driver seat fully forward, remove rear mounting bolts.
- Adjust the seat fully backward, remove front mounting bolts.
- Adjust the seat so it is centered over its mounting tracks.
- Disconnect the positive battery terminal. Block the trunk latch so it can't be closed.
- Tilt the seat back and reach underneath to disconnect the yellow electrical connector.
- Remove the seat from the car.



Step Two: Remove Rear Seat Bottom Cushion

- Pull up on the front edge of the rear seat bottom cushion.
- Pull the seat bottom out of the car.

Step Three: Side Trim

- Pull off the trim strip on the rear-seat side panel, revealing two deep screw holes.
- Using a T20 Torx bit and an extension, remove the two screws from those holes.
- Pull back the side panel (does not need to be completely removed).
- Do the same for the other side of the car.



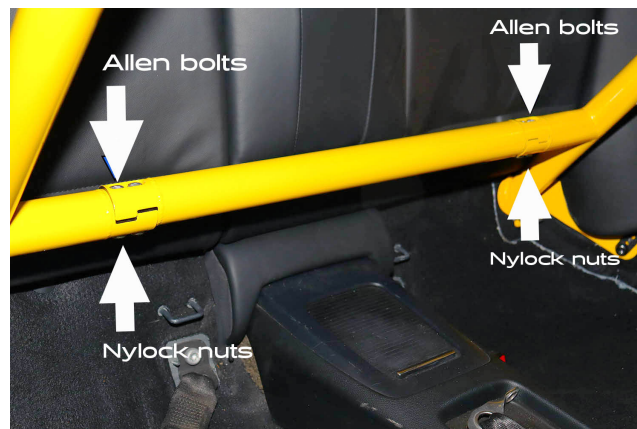
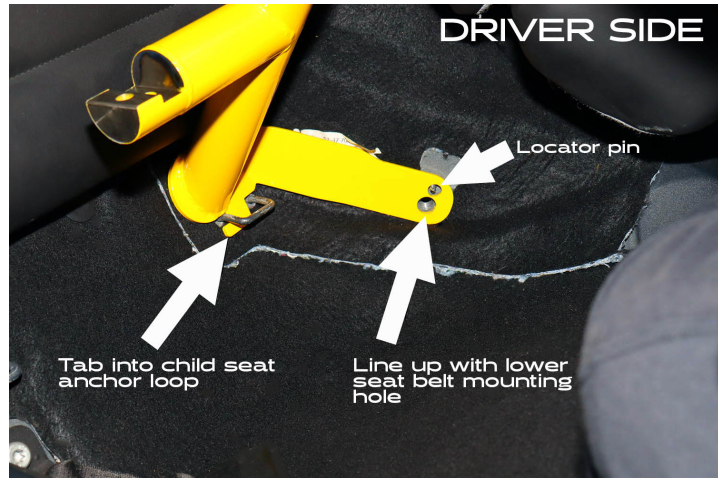
Step Four: Drill Holes & Mount Plates

- Pull back the carpet at the rear corner of the passenger foot well, revealing the rear cross member.
- Drill out the hole situated in the middle of the diagonal bracing, as indicated in the photo below, to 13/32".
- Place the front mounting plate as shown (you do not need to bolt it in place, but it helps make sure that hole is lined up).
- Mark the two forward-facing mounting slots on the cross member. Remove the mounting plate.
- Drill 13/32" holes through the front and back of the cross member at the two marks. Holes should be perpendicular to the cross member.
- Replace the plate and insert the short bolt up from the bottom through the first hole you drilled. Loosely fix a nut on the bolt.
- Insert the longer bolts front-to-back, with washers on the head end, through the other two holes you drilled and loosely fix nuts on them.



Step Five: Install Kickers

- Snap both side trim cards back in place and tighten them down with the T20 Torx screws.
- Replace the trim strips (yours may be aluminum or carbon fiber depending on your trim).
- Remove the lower seat belt bolt on each side using a T50 Torx driver.
- Move the rear seat side bolsters and seat belts out of your way.
- Hook the tab in each kicker through the child seat anchor loop as shown below.
- Line up the mounting hole on the kicker with the seat belt bolt hole on each side. Line up the smaller hole with the locator pin as shown.
- Replace the seat belt mounting brackets over the kicker braces and thread the T50 bolts back into the hole. Leave the bolts a bit loose for now.
- Replace rear seat side bolsters.
- Install the kicker cross bar, drop Allen bolts through the bolt holes in the interlocking joints and put nuts on the back side. Leave them loose for now.



Step Six: Install the Main Hoop

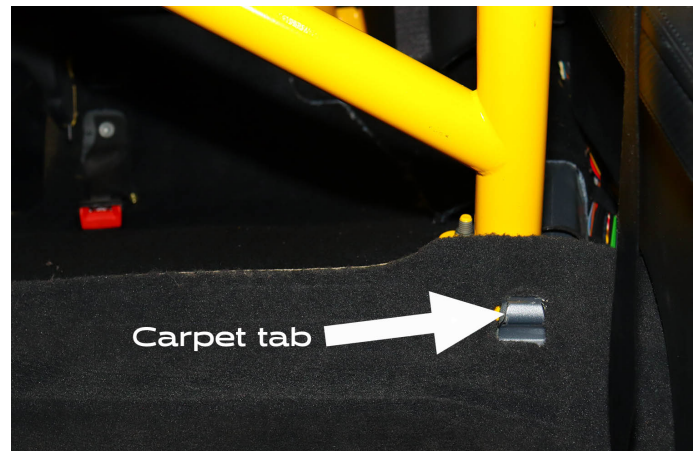
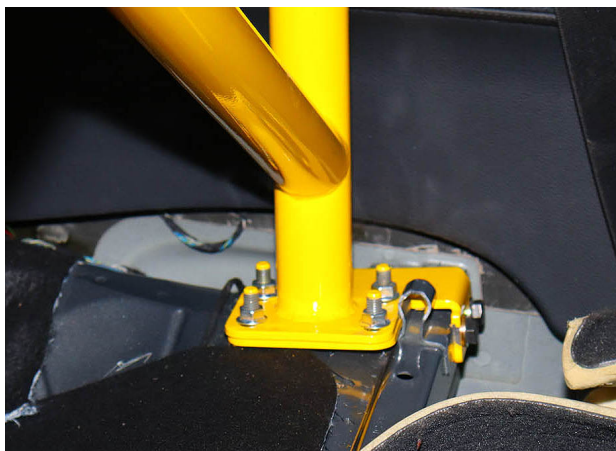
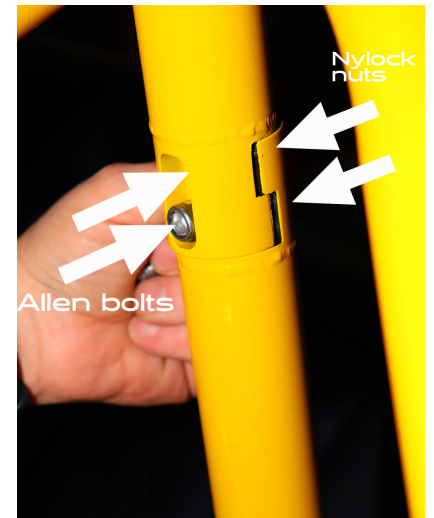
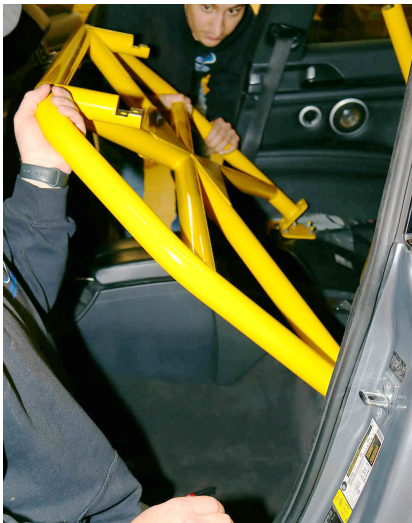
- With a helper, carefully place the main hoop in the car with the square feet facing down and the two interlocking joints facing rearward. Tilting the main hoop toward the front will help.
- Line up the slots in the feet of the hoop with the studs in the mounting plates.
- Install the four flare nuts on the mounting studs on each side, leaving them a bit loose for now.
- Line up the upper interlocking joints on the kickers with the corresponding joints on the main hoop.
- Insert Allen bolts through the holes in the joints, with Nylock nuts on the opposite side. Use a punch or Phillips screwdriver as a lever if necessary to get the holes in the joints to line up.
- With all the Allen bolts in all four joints (two main hoop, two kicker cross bar), all nuts and bolts in place from previous steps, you can now tighten fasteners as follows:

Allen bolts: 35 lb-ft

Main hoop mounting nuts 9/16": 45 lb-ft

Kicker/rear seat belt bolt T50: 40 lb-ft.

(You can reach behind the through-bolts of the main hoop mounting plate with a box-end 9/16" wrench to hold the nuts while you tighten the bolts with a 9/16" socket or wrench on the front side.)



Replace the carpets using the metal carpet tabs, reinstall your seat if necessary, and you're done. Don't forget to reconnect the battery!



If you have any questions during your roll bar installation, don't hesitate to call us at (844) 438-7244 or email sales@competitionmotorsport.com. We're here to help!

