

INDUKTIV

BMW E9X (E90,E91,E92,E93) Including M3 wireless charger install directions.

Tools needed: pry tool, t20 torx, 10mm socket / wrench (torx and socket only needed for E92 / E93 cars)

1. Remove shifter / shift knob by pulling straight up. Be careful not to injure yourself. Once shifter / shift knob is removed, next will be the shift surround. Pull straight up on the surround, if automatic make sure to unplug any plugs. If manual make sure to unplug shifter light plug.



2. Now that the shift knob and surround are removed, next we will pull up the console trim by grabbing the area where the surround sat and pulling straight up.



3. Lift console trim up and unplug I drive and any other plugs. Once unplugged flip console trim upside down.



4. With the console trim upside down locate the 4 t10 torx screws and remove with included tool. (Only applicable for cars with smokers package ashtray / induktiv unit with tray

option) if you already have the storage tray you will only need to push the rubber knob up from the inside of the existing tray. Clean tray and remove Velcro backing on back of charger and route the red end cable through the hole in tray. Mount charger using supplied Velcro unless already pre-installed by Induktiv.



5. Now take the included harness and route under the plastic brace as shown below.



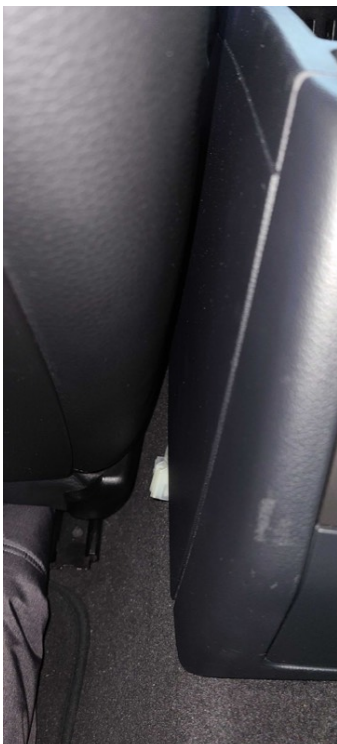
6. Continue routing the harness toward the ebrake area tucking it next to the shifter as shown.



7. Pull up on the front edge of the ebrake boot to lift up. This will help in routing the wiring harness towards the rear of the center console.



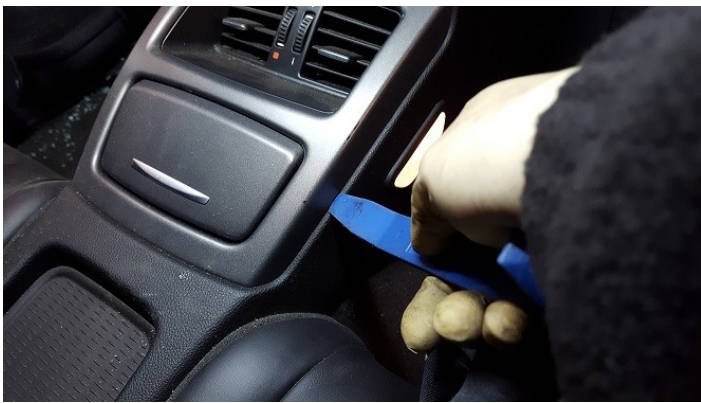
8. Now route the cable down the inside of the console towards the floor of the vehicle and out the bottom of the center console.



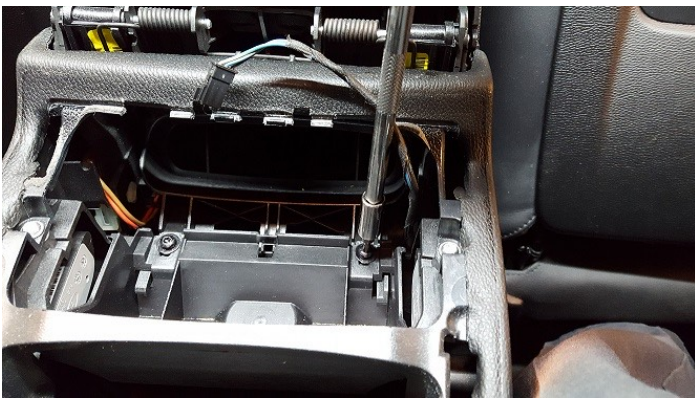
9a. E90 / E91 cars the rear of the console has a cover that unclips and pulls off. Move to step 10.



9b. E92 / E93 cars the rear console is extended to the rear seats. First remove the panel with the vent by prying up from the bottom.



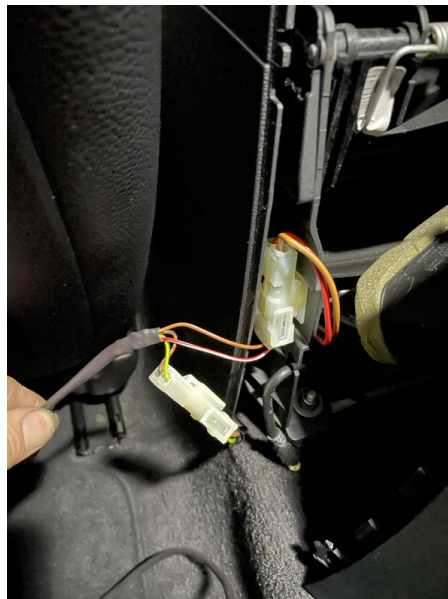
Once removed locate and remove 2 T20 screws. Now you will move onto the rear tray / pad. Remove the same way as the vent piece by prying up.



Once removed locate and remove the 2 10mm nuts. Now grab the seat panel and remove also.



10. Now with both versions of the rear console cover removed you will have access to the factory plug that powers the 12v lighter plug. This is the plug you will use to connect our wiring harness to.



11. Reinstall rear trim and move back to the center console trim. Tuck converter box as shown.



Plug the converter and charger into each other. Finally reinstall console trim, shifter surround and shifter / shift knob.



12. Turn on ignition to test charger is functional. Enjoy!

**For troubleshooting or questions please email us
info@induktivcharging.com**

*Induktiv is not responsible for any damage caused to vehicle during disassembly / assembly of vehicle. This is for instructional purpose only and some differences in the vehicles may happen. *

©Copyright 2020 Induktiv INC