



# FITTING INSTRUCTIONS

<b>PART #</b>	<b>074ST17A22M</b>
<b>Product:</b>	<b>FRONT BUMPER</b>
<b>Vehicle:</b>	<b>2019+ RANGER (USA)</b>

## WARNING

- Read instructions completely before commencing fitment.
- Always use personal safety equipment while cutting or operating tools.
- Left hand & Right hand components are determined as seated in the vehicle.
- Check & remove any build up in all captive nuts, if fitted to the product.
- Check scale on bumper template before cutting if applicable.
- After installation, place these instructions in the glove compartment of the vehicle.

**Torque all hardware to the following settings unless stated otherwise;**

	Metric			Standard		
	Bolt Dia. (mm)	Nm	ft. lb	Bolt Dia. (inch)	Nm	ft. lb
<b>TORQUE SETTINGS</b>	5	5	4	1/4"	9	7
	6	9	7	5/16"	22	15
	8	22	16	3/8"	33	27
	10	44	32	7/16"	55	43
	12	77	57	1/2"	86	66

- Do not attach this product using hardware not intended for this product.
- Only use hardware supplied by the TJM and specified in the instructions.
- Do not use this product for any vehicle make or model other than those specified by TJM.
- Do not remove any plaques or labels from the product.
- Modifying this product in any way may void any / all warranties.

For product warranty please refer to our website [www.tjmusa.com](http://www.tjmusa.com)

## 074ST17A22M



For product warranty please refer to our website [www.tjmusa.com](http://www.tjmusa.com)



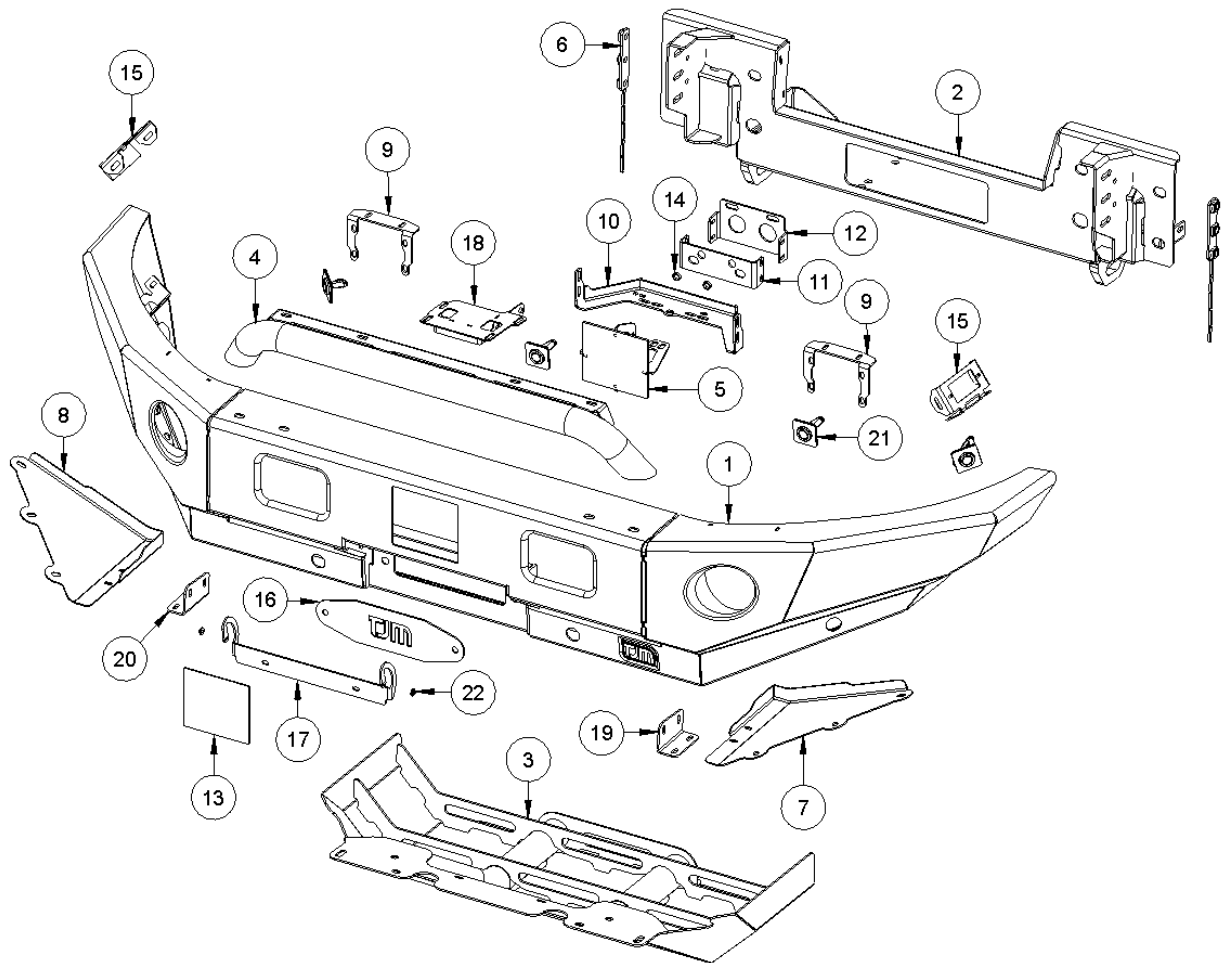
Item No.	Description	Qty.	Part #
<b>PARTS LIST</b>			
1	Front Bumper	1	F-28942
2	Winch Frame	1	F-29016
3	Stone Shield	1	F-29024
4	Center Hoop	1	F-29031

<b>FITTING KIT</b>			
5	Radar Blank Plate	1	F-29035
6	Nut Plate Upright	2	F-29040
7	Wing Guard LH	1	F-34266L
8	Wing Guard RH	1	F-34266R
9	Fog Light Bracket	2	F-29043
10	Mounting Bracket	1	F-29045
11	Radar Mount	1	F-29046
12	Radar Mount Bracket	1	F-31427
13	Radar Cover Panel	1	F-29039
14	Radar Mounting Shim	2	F-29048
15	Rock Light Bracket	2	F-12448
16	Fairlead Cover Plate	1	F-12927
17	License Plate Bracket	1	F-12866
18	Control Box Relocation Bracket	1	F-29389
19	Wing Guard Bracket LH	1	F-31418L
20	Wing Guard Bracket RH	1	F-31418R
21	Parking Sensor Housing	4	F-5417
22	Number-Plate Hinge Bush	2	K1292
N/A	VHB Double Sided Tape (110mm)	2	-

<b>FACTORY FITTED</b>			
N/A	TJM Sticker Large	1	K3550

Description	Qty.	Part #
<b>BOLT KIT</b>		
M5 x 0.8 x 20mm SHCS	2	-
M5 x Ø10mm x 1.0mm Flat Washer	4	-
M5 x 0.8 Nyloc Nut	2	-
M6 x 1.0 x 25mm Hex Head Bolt	34	-
M6 x Ø18mm x 1.6mm Flat Washer	68	-
M6 x 1.0 Nyloc Nut	34	-
M8 x 1.25 x 25mm Hex Head Bolt	8	-
M8 x Ø16mm x 1.6mm Flat Washer	16	-
M8 x 1.25 Nyloc Nut	8	-
M10 x 1.5 x 25mm Hex Head Bolt	8	-
M10 x 1.5 x 30mm Hex Head Bolt	2	-
M10 x 1.5 x 40mm Hex Head Bolt	8	-
M10 x Ø20mm x 2.0mm Flat Washer	18	-
M10 x Ø34mm x 3.0mm Flat Washer	10	-
M10 x 3.5 x 2.2 Spring Washer	8	-
M10 x 1.5 Nyloc Nut	10	-
M12 x Ø32mm x 3.0mm Flat Washer	4	-

For product warranty please refer to our website [www.tjmusa.com](http://www.tjmusa.com)



For product warranty please refer to our website [www.tjmusa.com](http://www.tjmusa.com)



1. Remove factory bumper.



2. Pull on front lower cover to remove as shown.



3. Cover removed.



4. Unbolt and remove side braces from chassis via the wheel well as shown.



5. Unplug the bumper wiring loom from the left-hand side as shown.

**Note: Remove inner wheel well lining if required.**



6. Unbolt 6 x chassis plate nuts and retain for re-fitment later.
7. With the aid of a helper, remove bumper as shown.

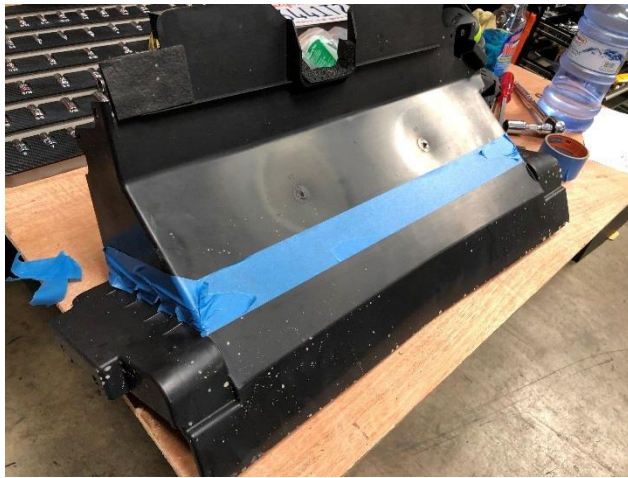


8. Remove license plate from bumper.
9. Remove radar (if fitted) from bumper.
10. Diss-assemble factory bumper to access fog lights, wiring loom, radar and parking sensors for fitment to TJM bumper.



11. Remove wiring loom, fog lights and parking sensors from bumper.





12. Remove clips retaining radiator shroud and remove from vehicle. Retain clips for re-fitment.
13. Place tape as shown to mark line for cutting.



14. Using an air saw, cut along the lower edge of the tape line shown.

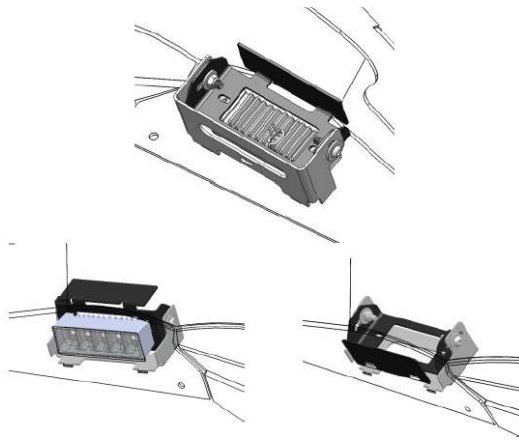


Always wear personal protective equipment while operating hand tools.



15. Re-install to vehicle using factory clips removed in previous step.





Rock light installed.

Blanking plate installed.

16. Install lights (**OPTIONAL, PART # 92465**) to “Rock Light Bracket” as shown using hardware supplied with rock light kit.
17. Position and install “Rock Light Bracket” and align level to outer face of “Front Bumper”. Secure using M6 x 1.0 x 25mm Hex Head Bolt (2), M6 x Ø18mm x 1.6mm Flat Washer (4) & M6 x 1.0 Nyloc Nut (2).
18. If rock lights are NOT fitted. Install the “Rock Light Bracket” as a blanking plate as shown.

***Repeat on Opposite Side***



***Note: Aftermarket LEDs can be fitted directly to the bracket on the bumper, or the factory fog lights can be fitted to the bumper as shown.***

19. Install the factory fog light to the “Fog Light Bracket” using M6 x 1.0 x 25mm Hex Head Bolt (4), M6 x Ø18mm x 1.6mm Flat Washer (8) & M6 x 1.0 Nyloc Nut (4).

***Repeat on Opposite Side***



20. Check left hand and right-hand sides are correctly aligned at the edge shown. Switch right and left-hand sides if required.

21. Install “Fog Light Bracket” to “Front Bumper” using M6 x 1.0 x 25mm Hex Head Bolt (2), M6 x Ø18mm x 1.6mm Flat Washer (4) & M6 x 1.0 Nyloc Nut (2).

***Repeat on Opposite Side***



22. If parking sensors are **not** present, install the 4 x “Parking Sensor Housing” without removing the center pop out.

**If parking sensors are fitted;**

23. Install the parking sensors into the “Parking Sensor Housings” by popping out the center of the housing and clamp using the retaining piece as shown.

24. Remove tape film and fix into “Front Bumper”.

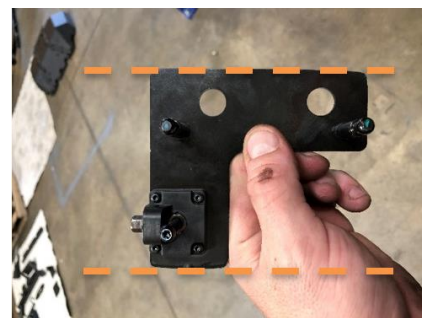


25. If vehicle is fitted with a radar, remove plastic cover from the radar as shown.

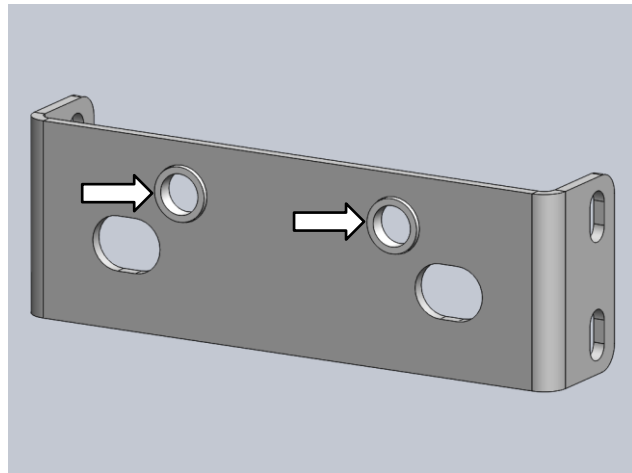
26. Pop radar unit off the pins on the bracket. Be extremely careful not to drop radar unit.



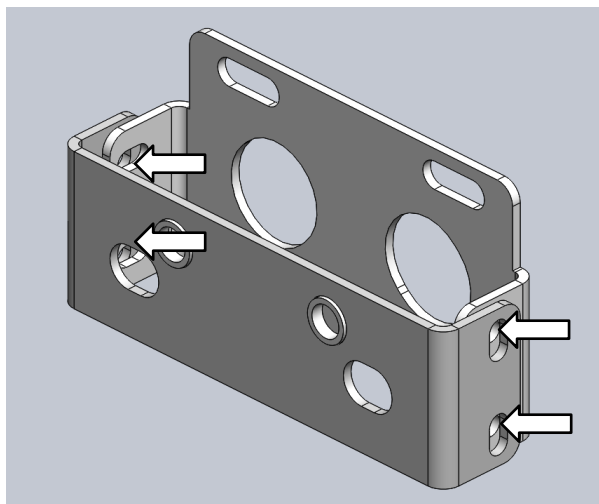
27. Use an air saw to cut the Factory Radar Bracket at the dashed lines as shown.



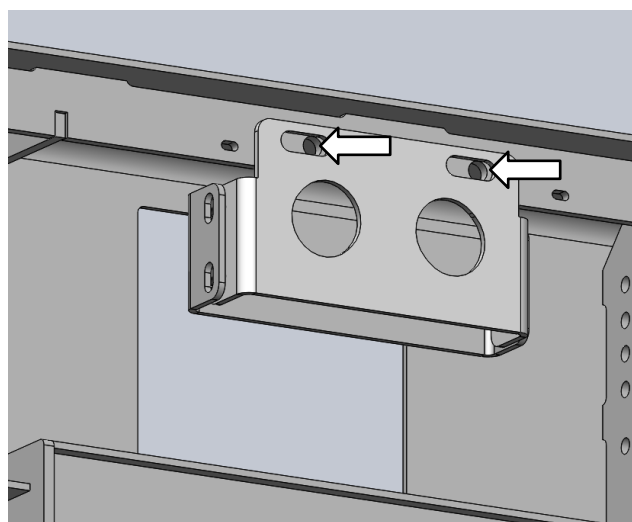
28. Paint exposed edges with rust proof paint.



29. Install the Factory Radar Bracket to the "Radar Mount" using M10 x 1.5 x 25mm Hex Head Bolt (2), M10 x Ø20mm x 2.0mm Flat Washer (4), "Radar Mounting Shim" (2) & M10 x 1.5 Nyloc Nut (2).

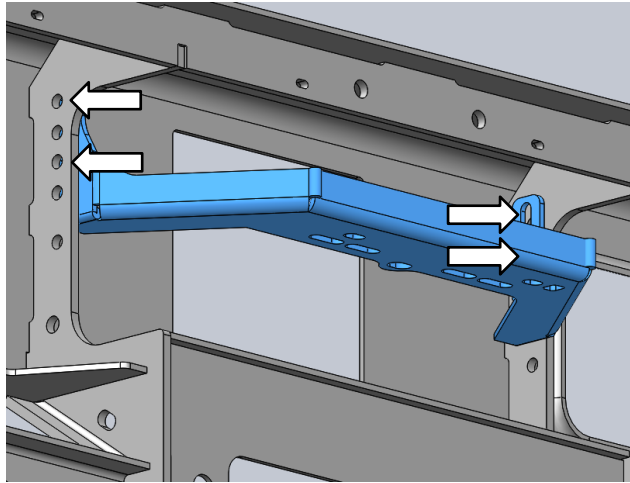


30. Secure the "Radar Mount" to the "Radar Mount Bracket" using M6 x 1.0 x 25mm Hex Head Bolt (4), M6 x Ø18mm x 1.6mm Flat Washer (8) & M6 x 1.0 Nyloc Nut (4).

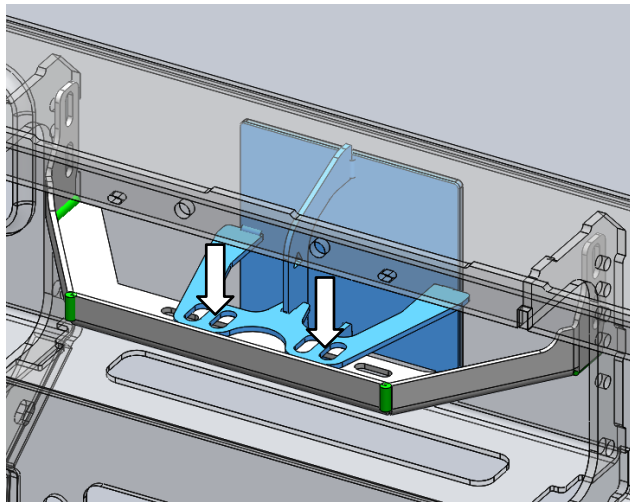


31. Secure the "Radar Mount Bracket" to the "Front Bumper" using M8 x 1.25 x 25mm Hex Head Bolt (2), M8 x Ø16mm x 1.6mm Flat Washer (4) & M8 x 1.25 Nyloc Nut (2).

**IF NO RADAR IS FITTED FOLLOW STEPS  
32 TO 33**



32. Loosely secure the “Mounting Bracket” to “Front Bumper” using M6 x 1.0 x 25mm Hex Head Bolt (4), M6 x Ø18mm x 1.6mm Flat Washer (8) & M6 x 1.0 Nyloc Nut (4).



33. Install “Radar Blank Plate” using M6 x 1.0 x 25mm Hex Head Bolt (2), M6 x Ø18mm x 1.6mm Flat Washer (4) & M6 x 1.0 Nyloc Nut (2).



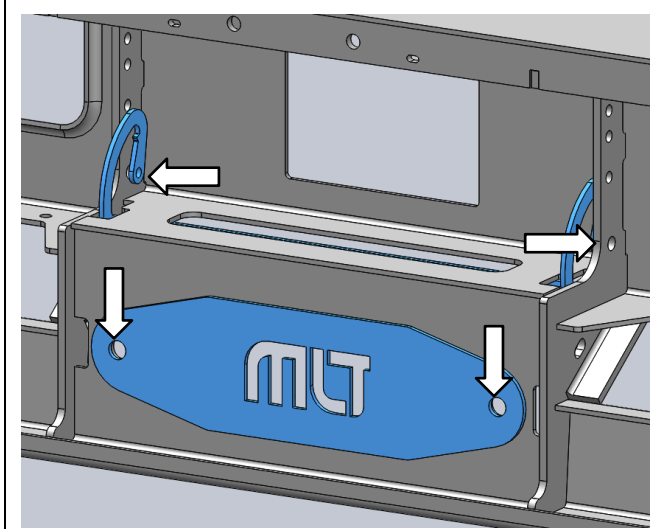
34. Using the double-sided tape secure the “Radar Cover Panel” to the radar and adjust radar location as required to be central and level with bumper face.

35. Torque all fasteners to specification.



**OPTIONAL STEP 36**

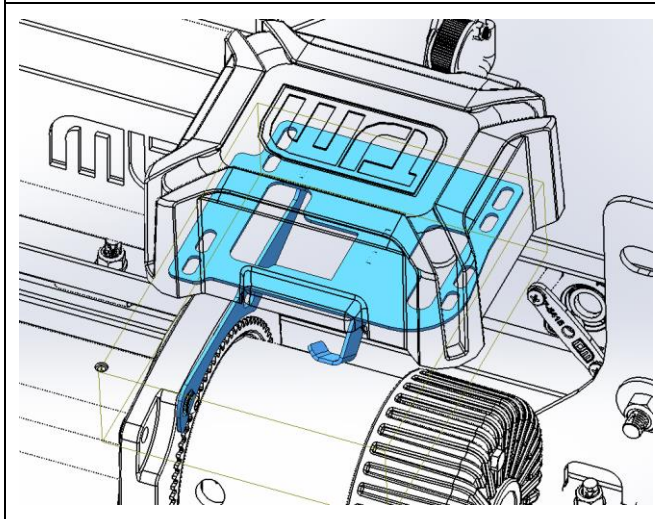
36. Install “Center Hoop” using M10 x 1.5 x 40mm Hex Head Bolt (2), M10 x 3.5 x 2.2 Spring Washer (2) & M10 x Ø20mm x 2.0mm Flat Washer (2).



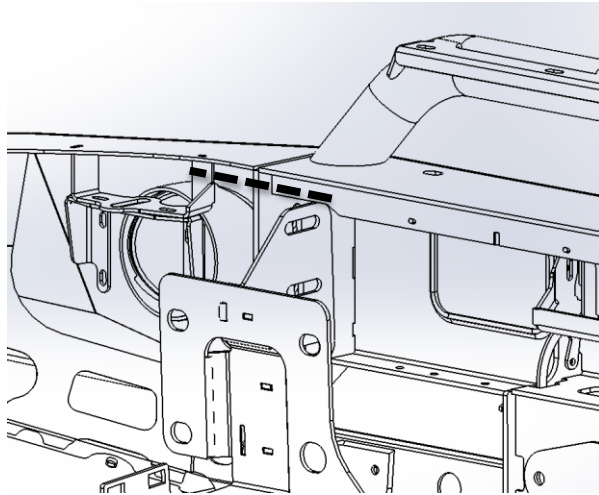
37. Install winch fairlead using winch supplied hardware if fitting a winch.

38. If no winch is being fitted, install “Fairlead Cover Plate” using M10 x 1.5 x 25mm Hex Head Bolt (2), M10 x Ø20mm x 2.0mm Flat Washer (4) & M10 x 1.5 Nyloc Nut (2).

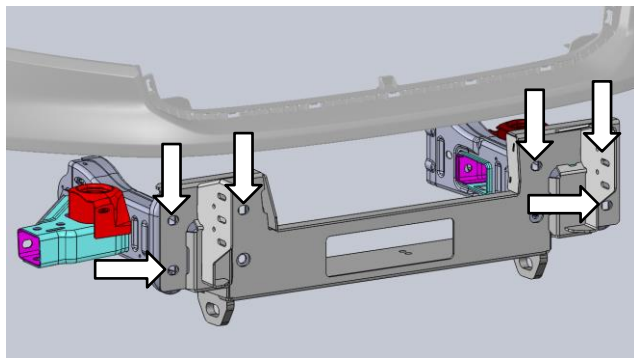
39. Fit “License Plate Bracket” as shown using M5 x 0.8 x 20mm SHCS (2), M5 x Ø10mm x 1.0mm Flat Washer (4), Number-Plate Hinge Bush (2) & M5 x 0.8 Nyloc Nut (2). Tighten to feel ensuring that the number plate can be rotated for winch access.



40. If fitting a TJM winch, remove control box and control box bracket and replace with “Control Box Relocation Bracket” as shown using winch supplied hardware removed.



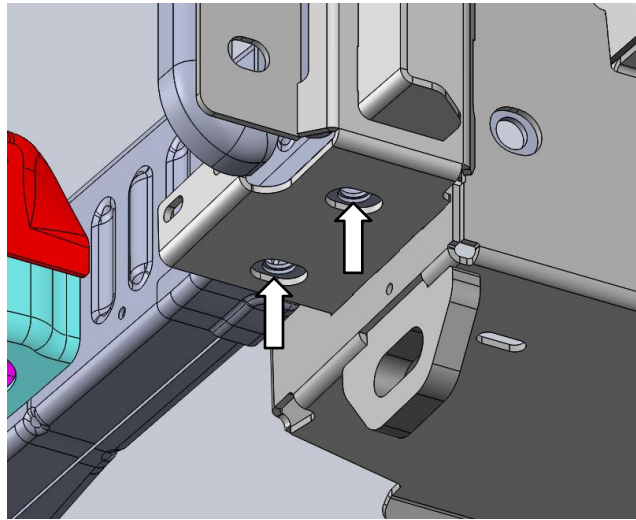
- 41. Install factory bumper wiring loom to the bumper assembly and cable tie in place.
- 42. Ensure wiring loom is going to clear winch frame when installed.



- 43. Install "Winch Frame" to vehicle using factory bumper nuts removed earlier.
- 44. Install winch to "Winch Frame" using winch supplied hardware.

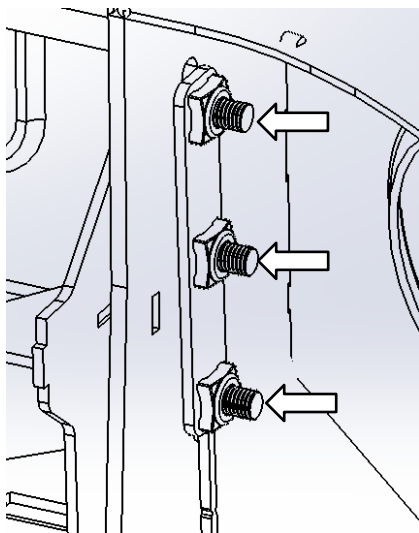


- 45. Centralize the "Winch Frame" to the vehicle body.
- 46. Secure "Winch Frame" using M10 x 1.5 x 30mm Hex Head Bolt (2), M10 x Ø34mm x 3.0mm Flat Washer (4) & M10 x 1.5 Nyloc Nut (2).



47. Install factory lower bolts with a M12 x  $\text{\O}32\text{mm}$  x 3.0mm Flat Washer (2) as shown.

***Repeat on Opposite Side***



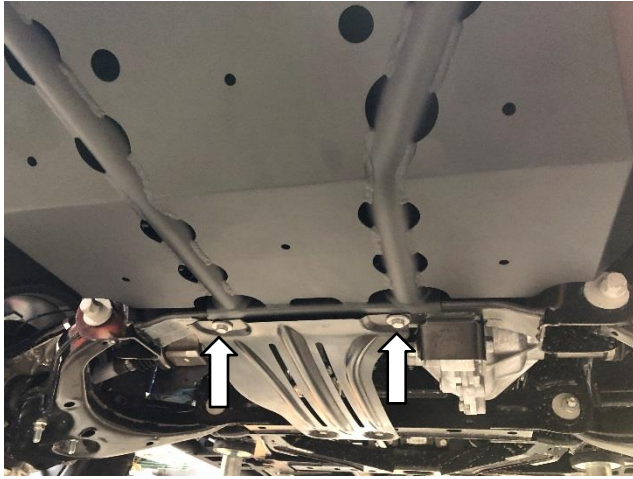
48. With the aid of two helpers, lift the "Front Bumper" into position. Install "Nut Plate Upright" into wings and fasten using M10 x 1.5 x 40mm Hex Head Bolts (6), M10 x 3.5 x 2.2 Spring Washer (6) & M10 x  $\text{\O}34\text{mm}$  x 3.0mm Flat Washer (6).



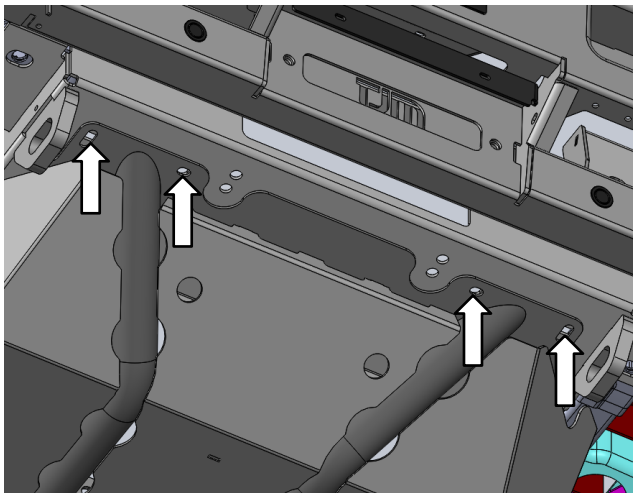
49. Adjust bumper to level height with even gaps to vehicle.

**Torque all fasteners to specification.**

50. Plug in bumper wiring loom to vehicle. Cable tie wiring loom as required.

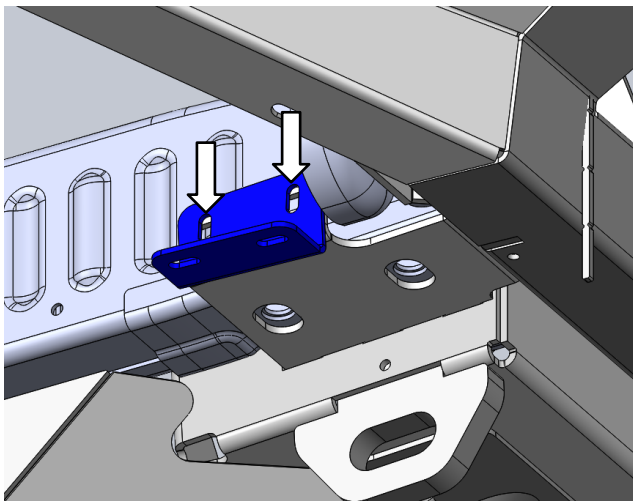


51. Install “Stone Guard” underneath the sump guard using factory bolts.



52. Fasten front of “Stone Guard” to “Winch Frame” using M10 x 1.5 x 25mm Hex Head Bolt (4), M10 x Ø20mm x 2.0mm Flat Washer (8) & M10 x 1.5 Nyloc Nut (4).

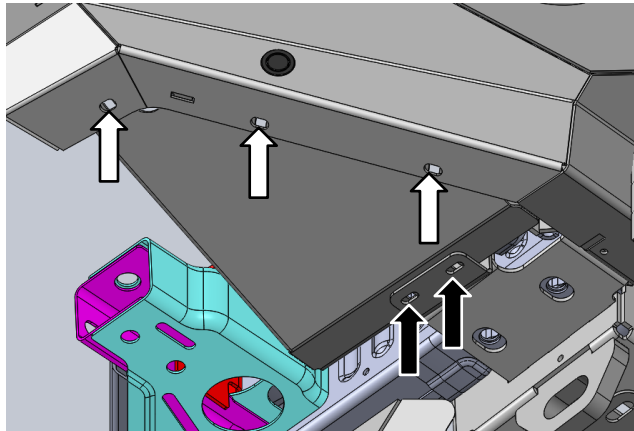
**Torque all fasteners to specification.**



53. Fit the “Wing Guard Bracket” to “Winch Frame” using M6 x 1.0 x 25mm Hex Head Bolt (2), M6 x Ø18mm x 1.6mm Flat Washer (4) & M6 x 1.0 Nyloc Nut (2).

***Repeat on Opposite Side***





54. Attach the “Wing Guard” to the “Front Bumper” using M8 x 1.25 x 25mm Hex Head Bolt (3), M8 x Ø16mm x 1.6mm Flat Washer (6) & M8 x 1.25 Nyloc Nut (3).
55. Use M6 x 1.0 x 25mm Hex Head Bolt (2), M6 x Ø18mm x 1.6mm Flat Washer (4) & M6 x 1.0 Nyloc Nut (2) to fasten “Wing Guard” to “Wing Guard Bracket”.

***Repeat on Opposite Side***  
**Torque all fasteners to specification.**



56. If vehicle is equipped with a radar, test drive and ensure radar is set to the correct height specified in the manufacture’s manual.

Re-test and adjust as required.