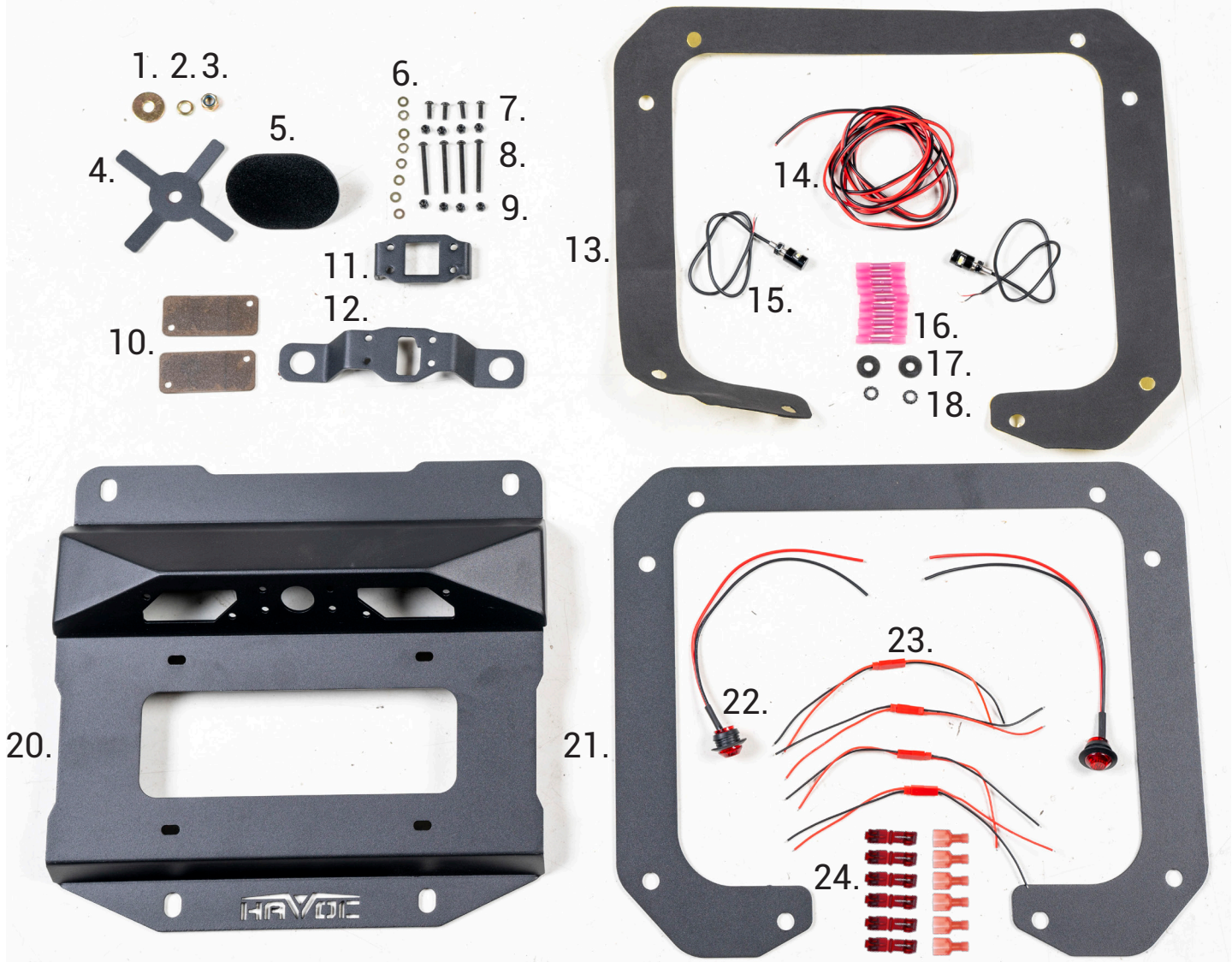


Components and Hardware:



Components and Hardware:

1. M8 Flat Washer	(1)	13. Tailgate Plate Foam Pad.....	(1)
2. M8 Lock Washer.....	(1)	14. Extra Wire.....	(1)
3. M8 x 1.25mm Nut.....	(1)	15. White Stud LED Light	(2)
4. Retainer Plug Cover	(1)	16. Heat Shrink Butt Connector.....	(10)
5. Plug Cover	(1)	17. M6 Flat Washer	(2)
6. M4 Flat Washer	(8)	18. M6 Lock Tooth Washer	(2)
7. M4 x 12mm Button Head Bolt	(4)	19. M6 x 1mm Hex Nut (not shown)	(2)
8. M4 x 40mm Button Head Bolt	(4)	20. Tailgate Plate.....	(1)
9. M4 Locking Nut.....	(8)	21. Tailgate Base Plate	(1)
10. Plastic Lens.....	(2)	22. Red LED Light w/ Grommet	(2)
11. Camera bracket (sm)	(1)	23. Wire Connector.....	(4)
12. Camera bracket (lg)	(1)	24. T-Tap Wire Connector	(6)

Spare Tire Delete, Bronco

Step 1:

Remove the plastic cover panel on the inside of the tailgate. This cover is attached with 3 clips on the left side of the cover. Simply pull on the cover or use a plastic pry tool to release the clips.



Step 2:

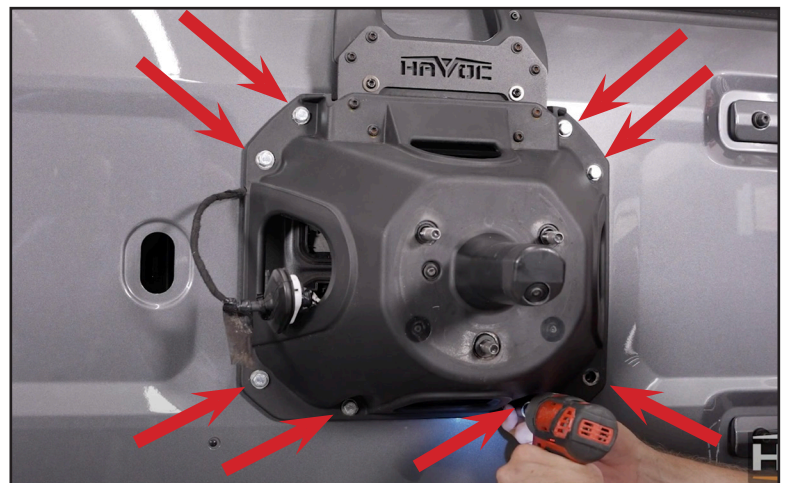
Unplug the third brake light and camera.

Release the wire grommet by pressing the tab at the top and then squeezing the plastic oval to release it from the body.



Step 3:

Remove the tire carrier from the tailgate. Use a 13mm wrench to remove the 8 bolts.

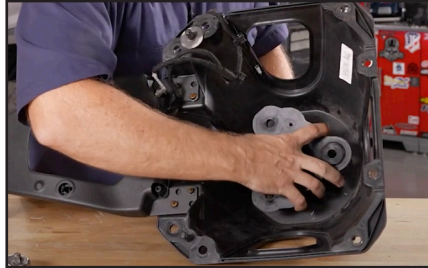


Spare Tire Delete, Bronco

Step 4:

Recover the camera from the OE housing. Unscrew the Torx T27 screws retaining the wheel stud plate at the front face of the mount. Flip the tire mount and remove the wheel stud plate from the carrier.

Next remove the plastic camera housing from the mount. This item is pressed in so it may require pulling and prying to release, just be aware not to damage the camera by pulling or pushing on it.



Step 5:

Unscrew the Torx T20 screw retaining the camera in the housing. With screw and brace removed, gently pull the camera out of the housing.



Step 6:

Peel away any protective film from the lens (10). Use the short M4 button head bolt (7), with flat washer (6), and locking nut (9) to install the lens (10) to the tire delete plate (20). Each lens is mounted on the inside of the tire mount with the smooth side facing outward and secured with two bolts. Install both lenses.

Do Not over tighten! It could cause the lens to crack. Simply snug this hardware.



Spare Tire Delete, Bronco

Step 7:

Insert both of the Red LED brake lights (22) to the larger camera bracket (12). The bracket has tabs bending down, therefore, the light also will be facing down. Install both LED lights.

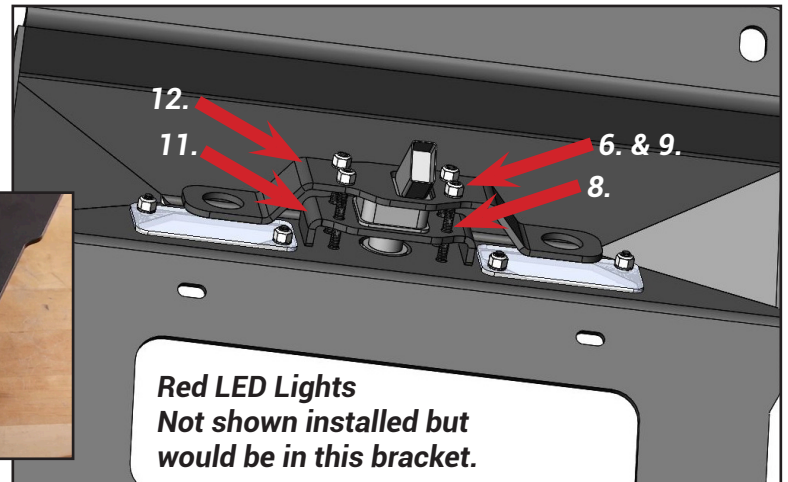


Step 8:

Mount the camera to the tire delete plate (20). First, place the smaller camera bracket (11) with tabs touching the tire delete plate. This is standing the camera the depth needed. Place camera to the smaller bracket. Make sure the plug of the camera is facing down.

Place larger camera bracket (12) over camera and secure using long M4 button head bolts (8), with flat washers (6) and locking nuts (9).

Do Not over tighten!
Avoid damaging the camera.
Simply snug this hardware.



Step 9:

With the pair of red LED lights, marry the wires together. Strip both red wires, twist together and crimp using the provided heat shrink butt connectors (16). Do the same process with the black wires.

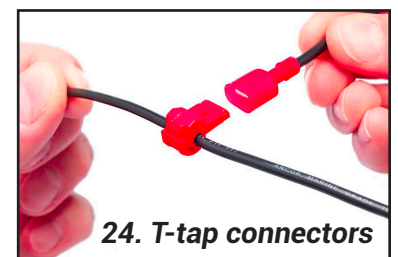
NOTE:

Its your choice to marry these connections with either the butt connectors (16) or T-tap connectors (24). The T-tap allows you to retain the OE plug incase you decide to return the OE brake light at a later date.

Wire the red LED lights to the OE harness pulled from the tire carrier. The red wire will pair with the yellow wire of the OE harness. The black wire pairs with the black OE harness wire.



16. Butt connectors



24. T-tap connectors

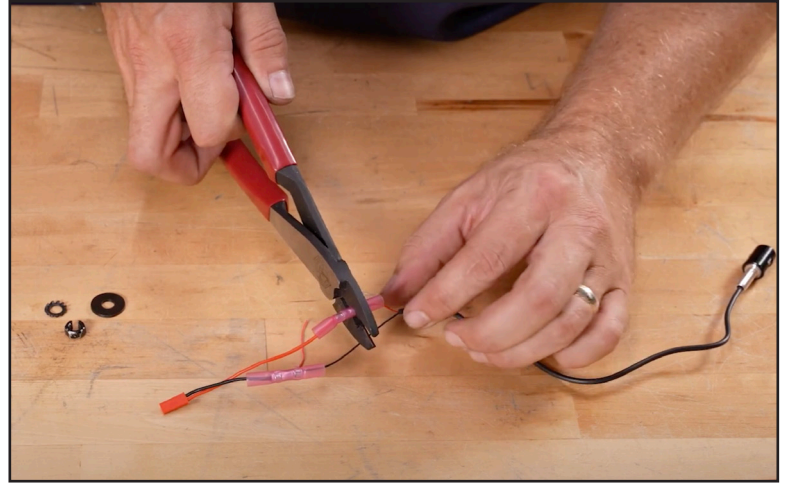
Spare Tire Delete, Bronco

Step 10:

Wire the white stud tag lights to the provided plugs to make them removable.

Use the provided wire plugs (23) and heat shrink butt connectors (16) to the white LED stud light (15). Keep in mind to make this a removable item the connection using the butt connectors must be staggered to allow it to feed through your tag mounting hole. Also wire the smaller plug (23) to the LED light. Wire red to red and black to black wire, crimp securely and heat shrink the items.

Apply to both LED lights.



Step 11:

Install tag with provided tag lights.

Feed the fully wired white LED stud light (15) through your tag and then through the tailgate plate (20).

Now feed the M6 flat washer (17) over the wire, the M6 locking washer (18) and secure using the M6 nut (19).

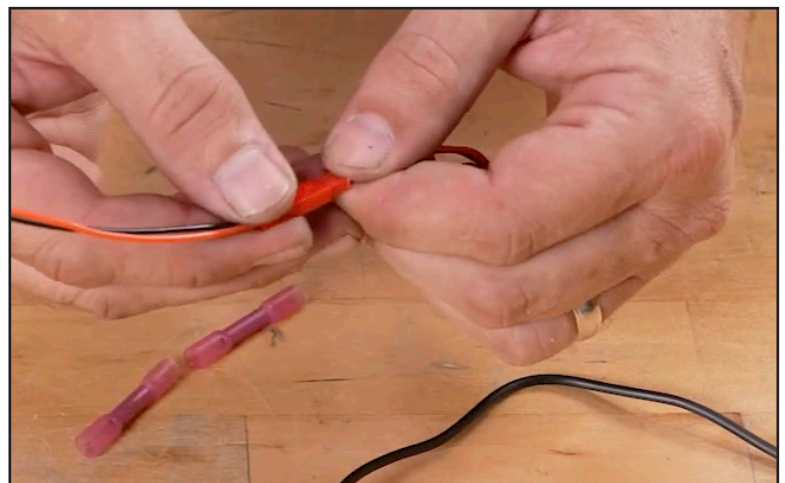
Rotate the stud light if needed to assure it fully illuminates the tag. Fully tighten both lights.



Step 12:

Connect the larger plug to the fully wired smaller plug (23) of the tag lights. With the pair of tag lights, marry the wires together. Strip both red wires, twist together and crimp using the provided heat shrink butt connectors (16). Do the same process with the black wires.

Strip and connect one side of the extra wire (14) to the married wires of this step. This extra wire will later need to be feed to a source powering your running lights. You may choose to connect to a taillight, trailer light harness, or the tag light harness from the OE bumper.



Spare Tire Delete, Bronco

Step 13:

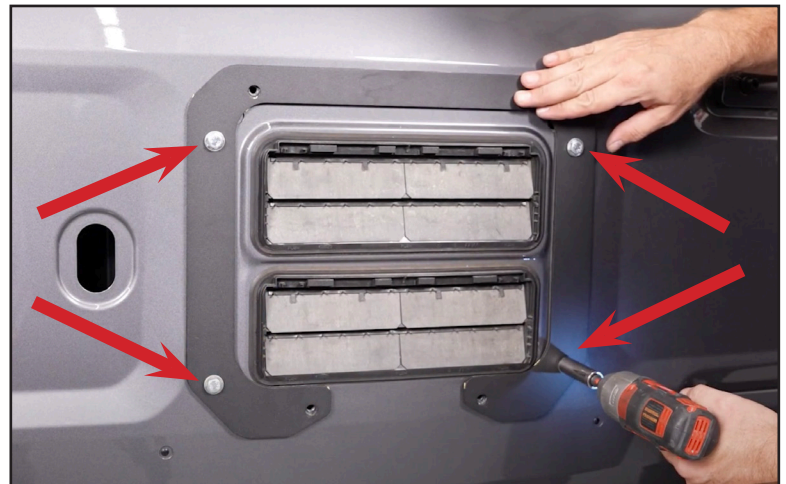
Apply the foam pad (13) to the tailgate base plate (21). Peel the adhesive backing, align the holes and shape and firmly press the pad to the plate.



Step 14:

Install tailgate base plate (21) to the tailgate. Make sure the foam pad side is against the tailgate. The tailgate plate is open on one side, that should be at the bottom. This allows the body color of your Bronco to show through the Havoc logo of the tailgate plate.

Use the OE hardware removed from step 3 to secure the plate. ONLY attach the other four holes at this time.



Step 15:

Feed the light harness, extra wire, and camera wire through one of the top vents into your tailgate.

Secure the tailgate plate with the remaining 4 bolts removed from step 3.



Spare Tire Delete, Bronco

Step 16:

From behind the vent route your wire harness back to the OE plugs. Plug your camera and third brake lights in. Check both features that they work correctly.

At this time feed the extra wire (14) from step 12 through the tailgate to the power source you choose for your tag lights. Use the T-tap connectors (24) to connect to the selected power source.



Step 17:

Install tailgate plug cover (5) to tailgate. Hold cover in place.



Step 18:

Secure the plug cover (5) with retainer (4), M8 flat washer (1), lock washer (2) and M8 nut (3). When tightening make sure the cover does not rotate. If it spins it could damage the tailgate paint.

Lastly return all cover panels removed for this install. Make sure the clips align and fully engage.

That completes your install.

