



INSTALL GUIDE

VOLKSWAGEN GOLF MK7/MK7.5 GTI-R

COMPETITION SERIES GEN 2 REAR WING KIT

DISCLAIMER

aerofabb, LLC is not responsible for damage to you or your vehicle while following this Install Guide and/or installing aerofabb products. Professional install is recommended. aerofabb also encourages you to read through this Install Guide in its entirety before beginning the actual installation process.



WARNING**HARDWARE THREAD GALLING / THREAD LOCK**

We provide Fasteners in Stainless Steel to ensure a long life span. Although Stainless Steel has many benefits like extreme corrosion resistance, threads can be sensitive to Nylon Lock Nuts. We recommend installing hardware with an Anti-Seize thread lubricant to prevent thread galling. Slowing down speed of install and keeping bolts stationary while tightening nuts are common practices to prevent thread galling.

We also recommend installing hardware with hand tools to prevent over tightening and the use of medium threadlocker where fastening locations utilize rivnuts and/or where no locking nuts or mechanical locking type fasteners are used.

KIT COMPONENTS

QTY	DESCRIPTION
1	54" AIRFOIL w/ PREINSTALLED MOUNTS
2	END PLATES (LEFT/RIGHT)
1	UPPER HATCH BRACKET
2	UPRIGHTS (LEFT/RIGHT)
4	LOWER HATCH BRACKETS (2 INSIDE / 2 OUTSIDE)

MISC

QTY	DESCRIPTION
4	MEDIUM THREADLOCKER

HARDWARE (A)

QTY	DESCRIPTION
4	M6 RIVET NUT
4	T-30 TORX BUTTON CAP M6X16MM BOLT
4	M6 X 12MM WASHER

HARDWARE (B)

QTY	DESCRIPTION
2	T-40 TORX BUTTON CAP M8 X 20MM BOLT
2	M8 X 15MM OD WASHER
2	M8 X 8MM HT LOCK NUT

HARDWARE (C)

QTY	DESCRIPTION
2	T-40 TORX BUTTON CAP M8 X 25MM BOLT
4	M8 X 15MM OD WASHER
2	M8 X 8MM HT LOCK NUT

HARDWARE (D)

QTY	DESCRIPTION
4	T-30 TORX BUTTON CAP M6 X 16MM BOLT
4	M6 X 12MM OD WASHER
4	M6 RIVET NUT

HARDWARE (E)

QTY	DESCRIPTION
4	T-30 TORX BUTTON CAP M6 X 20MM BOLT
8	M6 X 12MM OD BLACK NYLON WASHER
4	M6 LOCK NUT

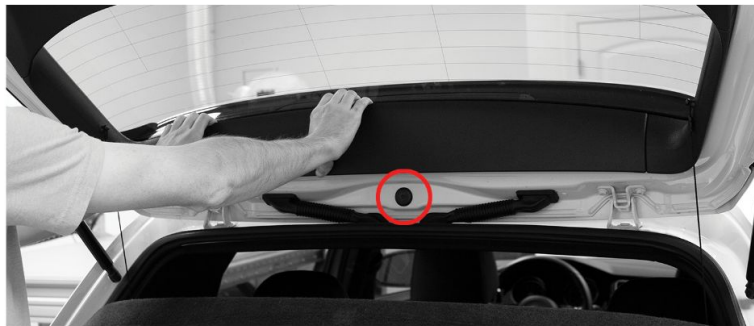
HARDWARE (F)

QTY	DESCRIPTION
4	T-30 TORX COUNTERSUNK M6 X 16MM BOLT

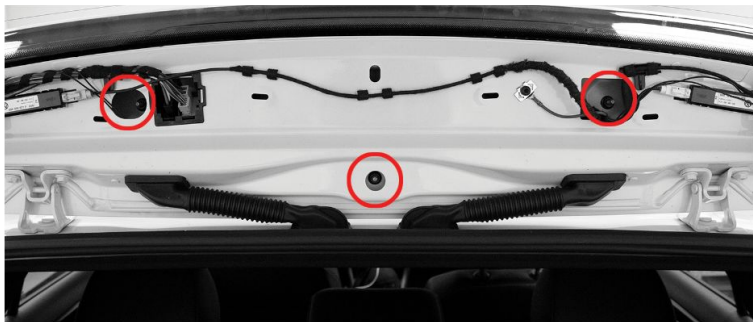
TOOLS NEEDED

RIVNUT GUN (M6 X1MM)	3MM HEX WRENCH <i>(OPTIONAL THIRD BRAKE LIGHT ONLY)</i>
BUBBLE LEVEL OR ANGLE FINDER	PUNCH TOOL
RATCHET	RAZOR BLADE OR X-ACTO KNIFE
DRILL	DETAIL SPRAY OR GLASS CLEANER
DRILL BITS (5/64, 1/8, 3/16, 7/32, 1/4, 5/16, 3/8, 10MM)	SMALL FLAT HEAD SCREWDRIVER
T-30 / T-40 TORX	PAINTERS TAPE
6MM HEX WRENCH	MARKER
10MM WRENCH	ELECTRICAL TAPE
10MM SOCKET	ANTI-SEIZE THREAD LUBRICANT
HEAT GUN	SILICONE SEALANT
13MM WRENCH	TOUCH UP PAINT

1. Begin by removing the upper interior panel from the inside of hatch. Remove plug circled below. (Pull straight out to release clips.)



2. Using a Ratchet and 10mm Socket, remove the three 10mm nuts circled below.



3. Starting on the Right or Left side, use a Heat Gun to soften Factory Adhesive between Side Fin and Rear Spoiler.

4. While adhesive is warm, lightly push upward on Spoiler creating a small gap between Fin.



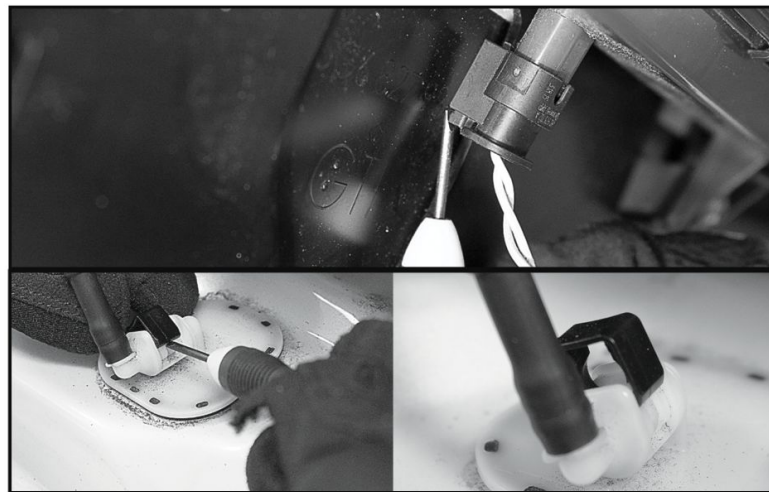
5. While pushing upward, use a Razor Blade or X-ACTO Knife to carefully slice through adhesive. Repeat process on opposite side.
(Several heat cycles/cutting of adhesive may be necessary to fully separate. Lubricating your blade with Detail Spray or Glass Cleaner can make for a smoother cut.)



6. Although the Spoiler may feel loose after fully separating adhesive, it is still held in place by four plastic mounting clips. To remove Spoiler, carefully pull straight up to release the clips. Slowly work from one end to the other. *(Lightly pushing down on rear edge of Spoiler will allow you to gain grip on its underside before pulling up as shown below.)*



7. With the Spoiler free from the vehicle, remove the Electrical Connector from the third brake light along with the Wiper Fluid Line. Using a Small Flat Head Screwdriver, release the Brake Light Connector by pressing in the Locking Tab and pulling down. Using a Small Flat Head Screwdriver, release the Wiper Fluid Line by pulling up on the Locking Clip. Slide straight back to disconnect.

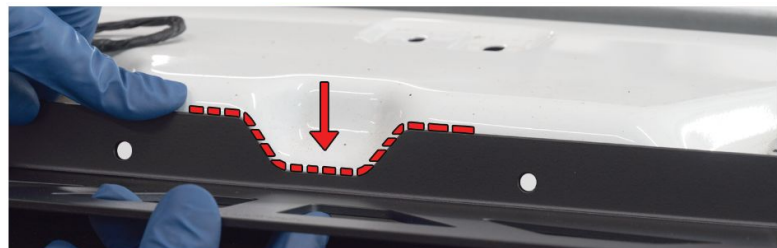


8. Remove Spoiler and place upside down on a non-abrasive surface.

9. Remove third brake light from Factory Spoiler and trim away center plastic mounting tab at the bend.

10. Align the profiled notch on top of Upper Hatch Bracket with the notch on top of the rear hatch. (see figure below)

IMPORTANT: Proper alignment of this component is critical!



11. With the Upper Hatch Bracket properly aligned with the notch on top of the rear hatch, use a Marker to mark center in all four bolt holes.

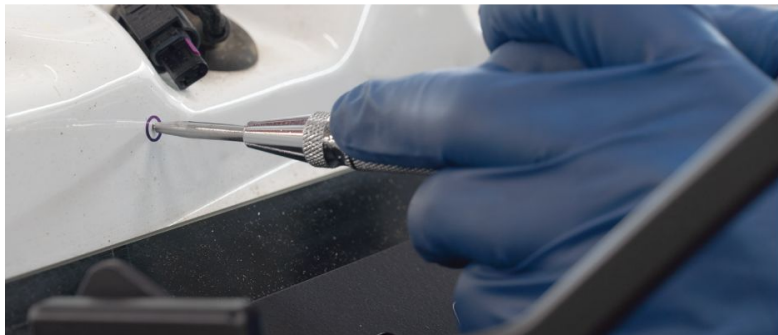


12. *If you purchased the optional third brake light, please ignore this step.* Use Electrical Tape to cover the open end of electrical connector and fix it in the position as shown below. This will not be used and needs to be moved out of way.



13. Use a Punch Tool to mark the center point so your drill bit doesn't walk. (see figure below)

IMPORTANT: Proper alignment of this component is critical!



14. Using a Drill and a 5/16" Drill Bit, drill four pilot holes on center with your punch marks. Step up the holes size in the following order:

Drill Bit Sizes - 1/8", 3/16", 7/32", 1/4", 5/16", 3/8" with a final size of 10mm

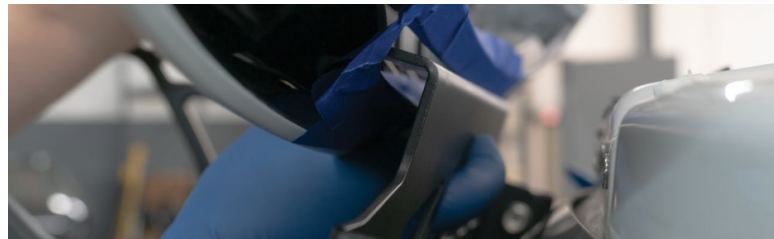
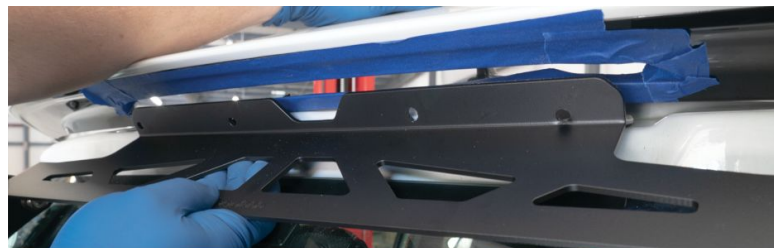
IMPORTANT: DO NOT wallow out final hole size with the 10mm Drill Bit. The rivet nuts need to fit snug in order to install properly with enough material to grab.

15. Use a Rivnut Gun (M6 X 1MM Pitch) to install the Rivet Nuts from **HARDWARE (A)** into the four holes.

-Prior to installing the rivet nuts, we recommend using touch up paint around raw edges of holes along with a bead of silicone sealant around the body of rivet nuts.



16. The Upper Hatch Bracket must be fed through the brake light opening in the factory spoiler. We recommend applying painters tape to the edges of rear backlight opening to avoid potential damage. (see figures below)



17. If you purchased the optional third brake light, pull the harness and connector through the factory brake light opening at this time. With the Upper Hatch Bracket fed through the factory spoiler, align the mounting holes with the rivet nuts.

18. Apply the supplied Medium Threadlocker to the bolts from **HARDWARE (A)**. Using a T-30 Torx, install the bolts with washers through the Upper Hatch Bracket and into the rivet nuts, and tighten.

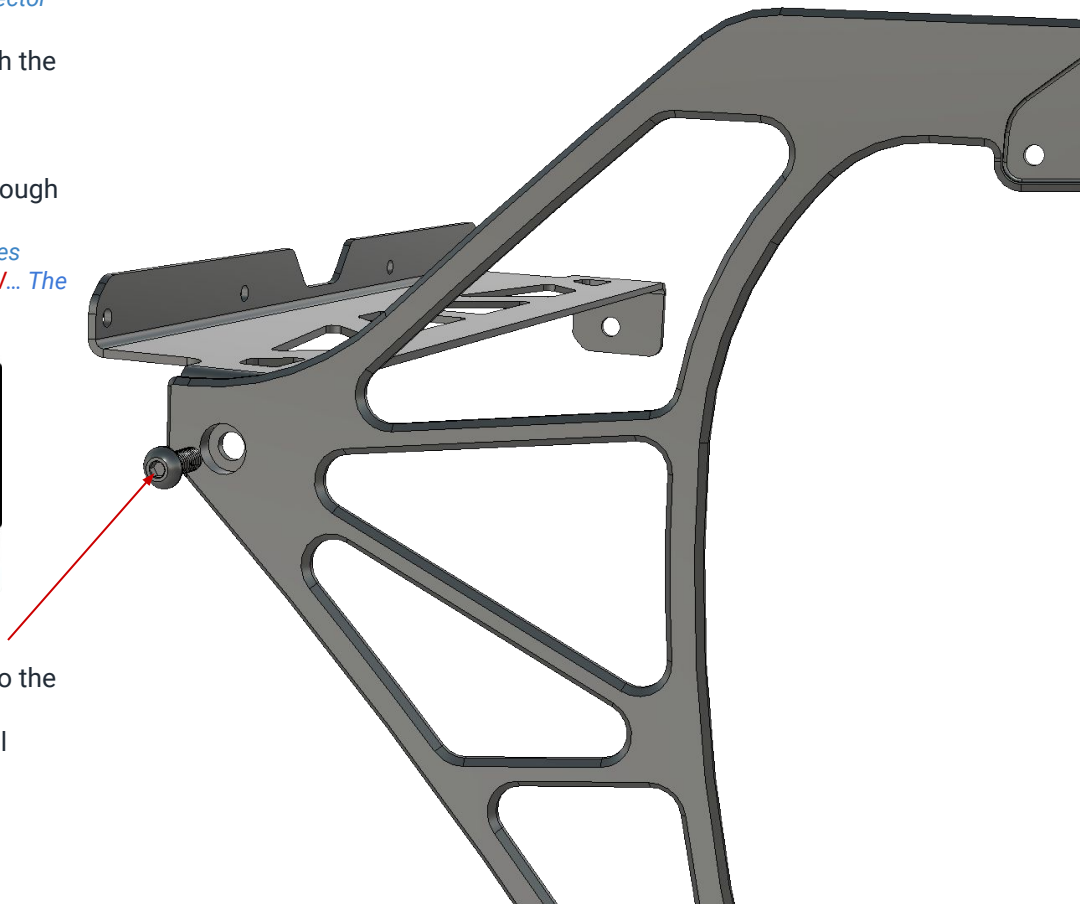
*Tips: Lightly lift up on the factory spoiler to allow access to the mounting holes through the brake light opening as shown below. **SCAN THE QR CODE BELOW...** The fitment is very tight... like a tiger.*



19. Starting with either the Right or Left Upright, use a T-40 Torx and 13MM Wrench to install **HARDWARE (B)** through the Upright and into the Upper Hatch Bracket and tighten. Back off about a 1/8 of a turn only enough allowing you to pivot the Upright upwards and not have it fall back down on its own. Repeat this process on the opposite side.

There should be no left to right play in the uprights from the Upper Hatch Bracket. (see illustration to right)

-LOGO AND COUNTER BORE FACE OUTWARDS ON UPRIGHTS.



20. With both Uprights fastened to the Upper Hatch Bracket, use **HARDWARE (C)** to loosely fasten both the Inside and Outside Lower Hatch Brackets to each Upright. (see illustrations to right)

*-Outside brackets have a more mild bend angle vs the inside.
-Rotate the Lower Hatch Brackets so that the foam pads are flat against the rear hatch body.*

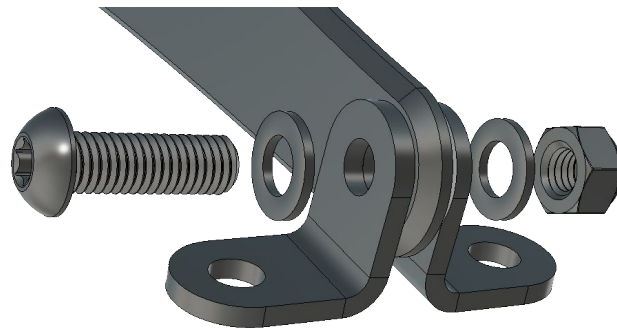
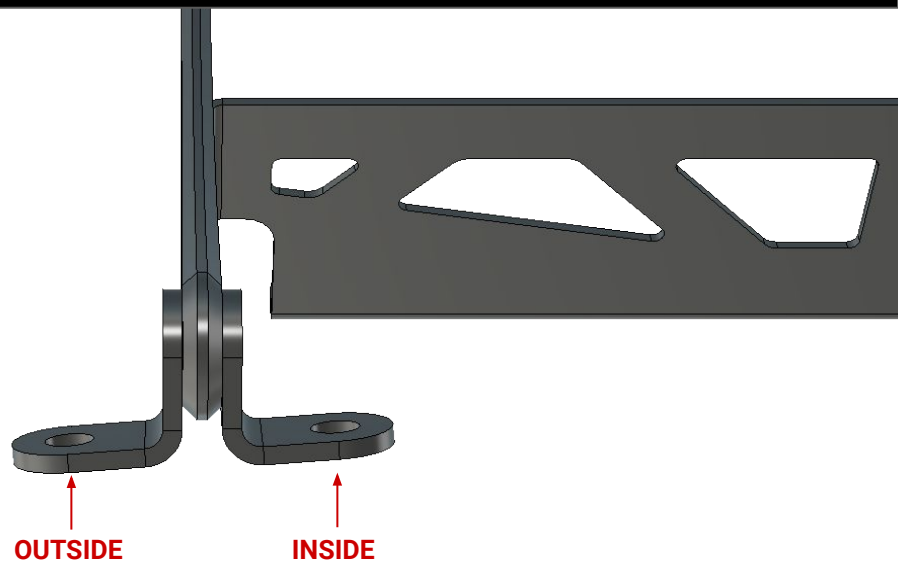
21. With the Lower Hatch Brackets fastened to both Uprights and laying flat on the rear hatch body, tighten **HARDWARE (C)**. Use your Punch Tool to mark center through the open holes on each Lower Hatch Bracket and onto the rear hatch body.

22. Pivot both Uprights away from the rear hatch body allowing enough room for you to drill in Step 23.

23. Using a Drill and a 5/16" Drill Bit, drill four pilot holes on center with your punch marks. Step up the holes size in the following order:

Drill Bit Sizes - 1/8", 3/16", 7/32", 1/4", 5/16", 3/8" with a final size of 10mm
IMPORTANT: DO NOT wallow out final hole size with the 10mm Drill Bit. The rivet nuts need to fit snug in order to seat properly with enough material to grab.

24. Use a Rivnut Gun (M6 X 1MM Pitch) to install the Rivet Nuts from **HARDWARE (D)** into the four holes.
-Prior to installing the rivet nuts, we recommend using touch up paint around raw edges of holes along with a bead of silicone sealant around the body of rivet nuts.



25. Pivot both Uprights back down into position, aligning the holes on the Lower Hatch Brackets with the rivet nuts that you installed into the body of your rear hatch.

26. Apply the supplied Medium Threadlocker to the bolts from **HARDWARE (D)**. Using a T-30 Torx, install the bolts with washers through the Lower Hatch Brackets and into the rivet nuts. Fully tighten bolts.

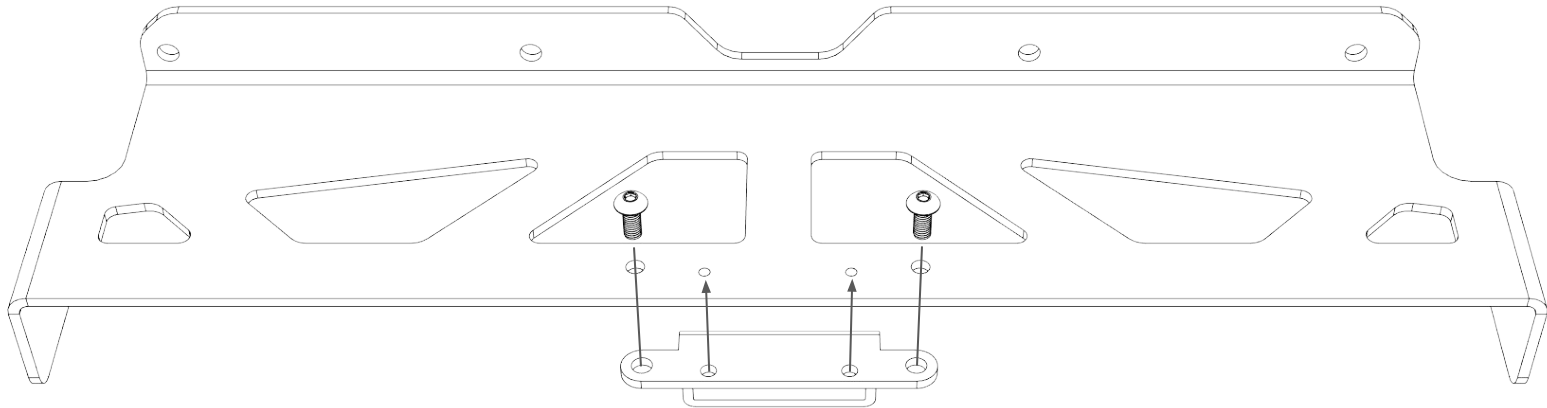
*-It might be necessary for you to loosen **HARDWARE (C)** if you are having trouble aligning bolts with the rivet nuts.*

27. With **HARDWARE (D)** installed, fully tighten **HARDWARE (C)**.

28. FASTEN YOUR THIRD BRAKE LIGHT

*(OPTIONAL: Apply a small amount of medium threadlocker to the two **M5 X 12MM Bolts**.)*

Fit the inner holes of your brake light bracket back over top of rivet pins which will fix your brake light into position. Using a 3mm Hex Wrench, thread the M5 bolts through the Upper Hatch Mount and into the brake light brackets outer holes and tighten. *(DO NOT OVERTIGHTEN ALUMINUM HARDWARE)*



SKU: TBL-VW-MK7-MK7.5-GTI-R-SWNRWK-CS

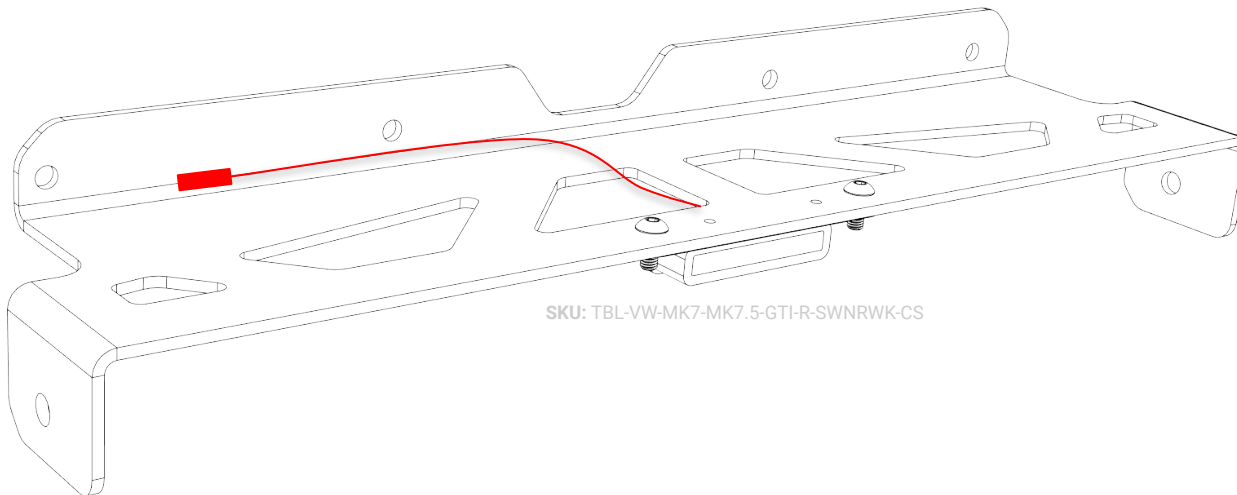
29. ROUTING YOU CONNECTOR

With your third brake light securely installed onto the upper hatch bracket, loosely fasten your upper hatch bracket back onto your wing uprights. Feed the brake light harness through the left inner cut out as shown in red. Pull the factory harness from the car and through the OEM brake light cut out of your factory spoiler. Connect the brake light and test to ensure it functions properly.

There should be no pulse pattern of flicker when pressure is applied to the brake pedal, this is a steady signal illumination brake light.

TUCK ANY EXCESS HARNESS UP INSIDE YOUR FACTORY SPOILER

30. Using **HARDWARE (E)**, place one black nylon washer over each bolt. Raise airfoil in between the Uprights and line up the pivot holes **(A)** on airfoil mounts to the pivot holes **(A)** on the Uprights and insert hardware.



SKU: TBL-VW-MK7-MK7.5-GTI-R-SWNRWK-CS

31. Using the remaining bolts and one nylon washer on each from **HARDWARE (E)**, choose your desired AoA by inserting the bolt through one of the adjustment holes. (see illustrations to right)

For AoA data, please refer to the "Performance and Data .pdf" which can be found on the product page below.

<https://www.aerofabb.com/products/competition-series-rear-wing-kit-mk7-mk7-5-gti-r>

31. Install the four remaining nylon washers from **HARDWARE (E)** over the end the four bolts. **APPLY ANTI SEIZE TO ALL FOUR BOLTS.** Using a T-30 Torx and 10mm Wrench, tighten **HARDWARE (E)**.

33. Using the supplied Medium Threadlocker, apply to all four bolts from **HARDWARE (F)** and install the Left/Right Endplates. (see illustrations to right)
IMPORTANT: The Endplates are also AoA adjustable and must be set correctly by matching the Rear Wing Elements AoA.

Note: The top of the Endplates should be as close to parallel with the ground as possible depending on vehicles suspension/rake. Use a Bubble Level or Angle Finder to verify.

34. Check all Rear Wing Kit hardware for tightness.

35. Tighten Factory Spoiler hardware and reinstall interior trim to complete this installation.

