



INSTALLATION GUIDE

09-> B8 Audi A4, A5 2.0T Front Mounted Intercooler

FOR RACING USE ONLY

Congratulations on your purchase of the A.W.E. Tuning Front Mounted Intercooler system for the 09-> Audi 2.0T. Exquisite build quality with industry leading performance distinguishes this intercooler system from all others.

PLEASE NOTE THAT THIS INTERCOOLER WILL NOT FIT CARS WITH DRIVE SELECT FACTORY OPTION.

Contact us with any installation questions.

215 686 1670

awe-tuning.com

sales@awe-tuning.com

PARTS LIST

- 1 Intercooler assembly
- 2 Intercooler support bracket
- 1 Aluminum air baffle
- 1 Air baffle gasket
- 4 Foam pad
- 2 M10 allen head bolt
- 2 M10 lock nut
- 2 M10 washer
- 4 M8 allen head bolt
- 4 M8 lock nut
- 8 M8 washer
- 2 M6 allen head bolt
- 2 M6 lock nut
- 4 M6 washer

Required tools and materials:

- Selection of screwdrivers
- Selection of sockets and a ratchet
- Selection of wrenches
- 12mm drill bit
- Step drill bit
- Torx bits

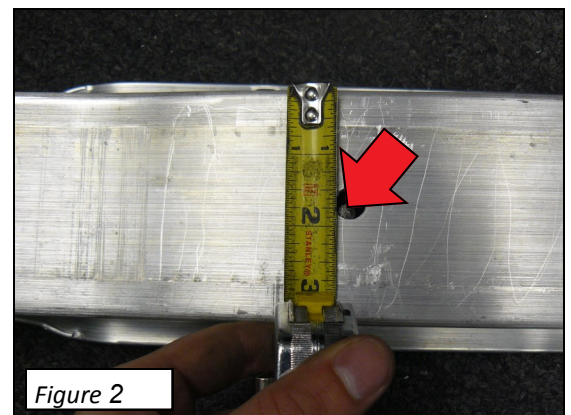
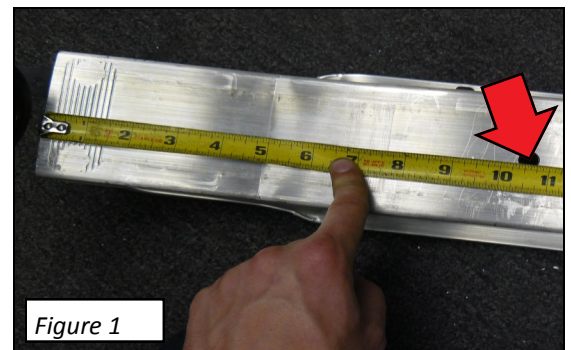
Step 1

Remove the front bumper, stock intercooler, and aluminum bumper support.

Step 2

Center punch two spots on the back side of the aluminum bumper support, located $10 \frac{9}{16}$ " from each end and $1 \frac{11}{16}$ " from the **top** edge as show in **Figures 1 and 2**.

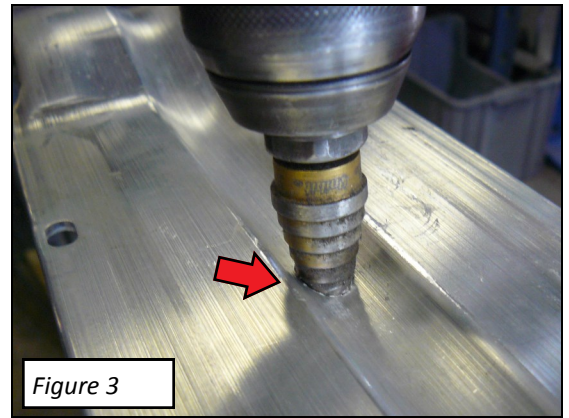
Drill a 12mm hole at each center mark, though the back and front of the support bar in one operation. Keep the drill as straight as possible. The resulting hole on the front of the support should appear within the "trough" or indentation running lengthwise, at arrow in **Figure 3 on next page**.



Step 3

On the front side of the bumper support enlarge the two 12mm holes to 3/4" diameter using a step drill or equivalent as shown in **Figure 3**.

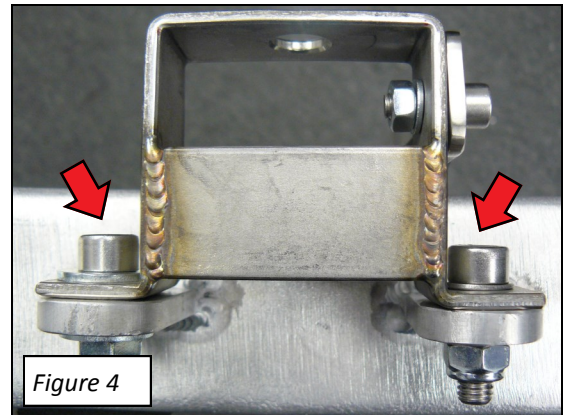
DO NOT DRILL COMPLETELY THROUGH THE ENTIRE SUPPORT IN THIS STEP. DRILL ONLY THROUGH THE FRONT WALL. This larger hole is intended to allow the head of the M10 allen bolt to contact the back wall when inserted from the front of the hollow bumper support in Step 7.



Step 4

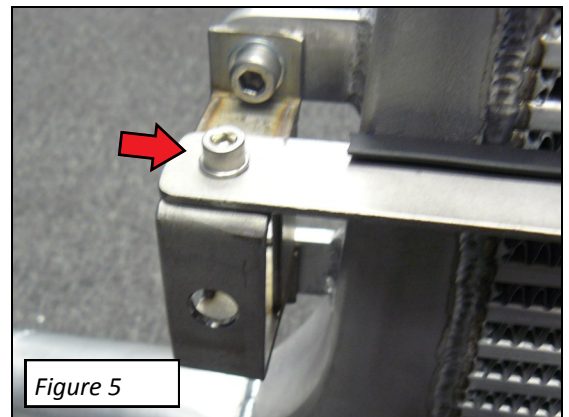
The front side of the intercooler assembly faces you as you read the serial badge located at the top of the core.

Install the two included support brackets on the **front** side of the intercooler assembly end tank tabs as shown in **Figure 4**. Use the provided M8 bolts, washers and locking nuts (at arrows in Figure 4). Leave the bolts loose for now.



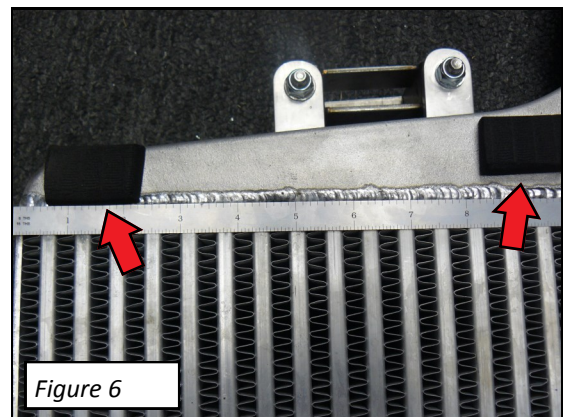
Step 5

Install the included aluminum air baffle and gasket along the front of the core using the provided M6 bolts, washers and locking nuts as shown at arrow in **Figure 5**. Fully tighten these bolts as well as the ones installed in Step 4.



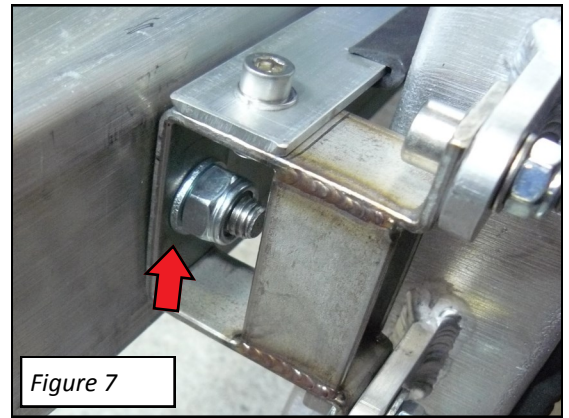
Step 6

Apply the adhesive backed pads to the rear of both end tanks at arrows in **Figure 6**. The top edge of the lower pad should be installed approximately 8 inches from the top of the intercooler core.



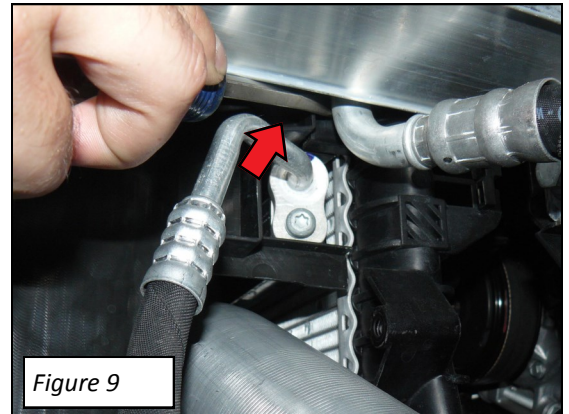
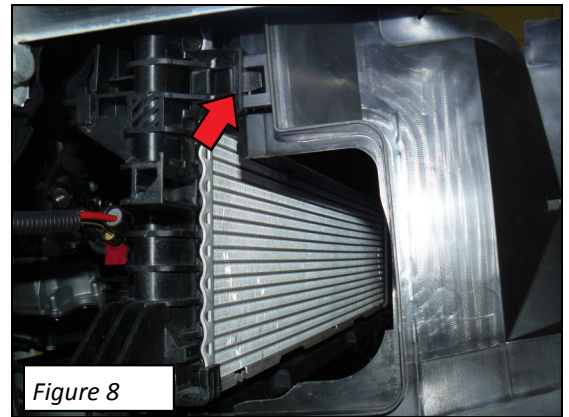
Step 7

Attach the core assembly to the bumper support using the provided M10 bolts, washers and locking nuts as shown in **Figure 7**. Leave these bolts loose for final adjustment on the vehicle.



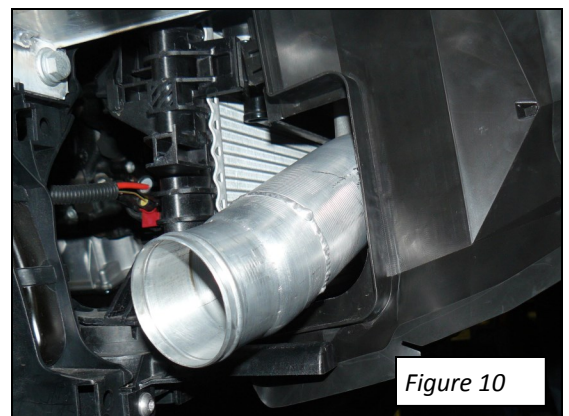
Step 8

If they were previously removed, re-install the factory radiator shrouds. Leave the lower snap clips disconnected for now as shown at arrows in **Figures 8 and 9**.



Step 9

Install the bumper support and core assembly while carefully positioning the lower sections of the radiator shrouds around the intercooler inlet and outlet tubing, as shown in **Figure 10**.

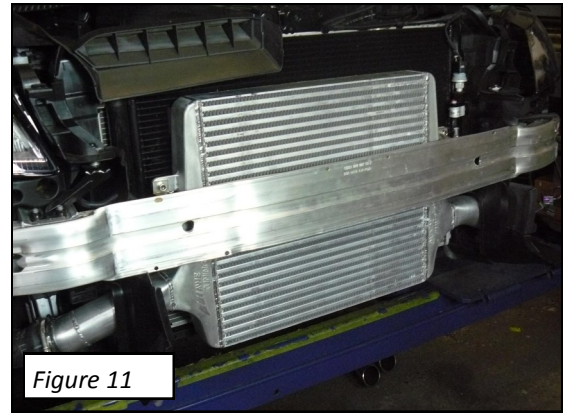


Step 10

Connect the factory intercooler inlet and outlet hoses and re-install all the bumper support factory fasteners and clips.

Make sure the intercooler is aligned properly and then tighten the M10 bolts that secure the intercooler assembly to the bumper support.

Make sure all hose clamps and fasteners are tight and then re-install the bumper cover.



ENJOY

Your intercooler system requires no maintenance other than periodic cleaning of the exterior fins to ensure optimum cooling capacity.



Any questions or comments,
please do not hesitate to contact us:

1-888-565-2257
awe-tuning.com
sales@awe-tuning.com



AWE Tuning
2385C Maryland Road
Willow Grove, PA 19090
215-658-1670
sales@awe-tuning.com

Thank you for choosing A.W.E. Tuning as your performance automotive parts supplier. Please remember that a performance car is only as strong as its weakest link. Therefore, it is vital that you maintain your vehicle to factory specifications.

By installing or using the purchased product, the Consumer accepts this warranty and any specific Manufacturer warranties enclosed.

Limited Warranty

The following warranty is valid only in the United States.

The Manufacturer's full warranty applies to all products sold.

Secor Ltd. (A.W.E. Tuning) warrants to the original retail purchaser (Consumer) this product (B8 A4/A5 FMIC) against manufacturing defects for one year from date of original purchase.

Upon verification of warranty coverage, A.W.E. Tuning will repair or replace the defective product at their discretion, without charge. This is the only remedy the Consumer has for any loss or damage, however arising, due to nonconformity in or defect of the product. This warranty does not cover consequential damage, loss of time or revenues, inconvenience, loss of use of vehicle, damage to the vehicle or components, or other incidental or indirect damage.

All warranties are void if the product was not installed by a certified auto mechanic, improperly serviced, modified, or used in a way not intended by the Manufacturer. Use of product in Motorsports or Racing conditions is grounds for warranty denial. Motorsports and Racing is an inherently abusive operational condition, and it is impossible to warranty for this type of usage.

The Consumer is responsible for ensuring that the product is installed in a safe and proper manner, and should cease usage of the product immediately if an unsafe or improper condition is noted. If an unsafe or improper condition is noted, the Consumer should then immediately contact the facility where the product was installed or A.W.E. Tuning directly.

Please contact the original place of purchase for any warranty claims or explanations of this document.