



780 Professional Drive N. Shreveport, LA 71105 Phone (318)-524-2270 Fax (318)-524-2297

Max Clearance Polaris RZR 800 “S” Front Forward Control Arm Kit MCFFA-RZRS

Read before Installation

This product is designed for use on ATVs and/or RUVs to increase ground clearance and fender clearance. Purchasers should be aware that use of this product may increase the frequency of required maintenance, part wear, and will raise the center of gravity on your ATV and/or RUV, increasing risk of roll-over, injury and death on all types of terrain. It is your responsibility to always inform other operators and passengers of this vehicle about the added risks.

High Lifter Products, products are designed to best fit users ATV/RUV under stock conditions. Adding, modifying, or fabricating any OEM or aftermarket parts will void warranty. High Lifter Products, products could interfere with other aftermarket accessories. If the user has aftermarket products on machine, contact High Lifter Products to verify that they will work together. Adding aftermarket suspension components and/or more aggressive tires can cause breakage of other OEM driveline components such as differentials, axles or drive shafts.

We recommend that wider tires and/or wheel spacers be used to achieve a wider stance and to improve stability of the ATV and/or RUV. Riders should be advised that the handling characteristics of a taller ATV and/or RUV are different and require extra care when riding, particularly on side hills or off-camber situations. If you further raise the center of gravity by adding taller tires, heavy loads to racks or seats, or by any other means, the ATV and/or RUV must be operated with even more care, at slower speeds and on relatively flat ground. All turns should be done at a slow speed, even on level ground.

Operation of an ATV and/or RUV with or without modified suspension components, while or shortly after consuming alcohol or drugs, subjects the rider to the risk of serious bodily harm or possible death. This risk is compounded if the rider does not wear an approved helmet and other safety gear. High Lifter urges that all approved safety gear be worn when riding an ATV and/or RUV as a driver or passenger.

By purchasing and installing High Lifter Products, products, user agrees that should damages occur, High Lifter Products will not be held responsible for loss of time, use, labor fees, replacement parts, or freight charges. High Lifter Products will not be held responsible for any direct, indirect, incidental, special, or consequential damages that result from any product purchased from High Lifter Products. The total liability of seller to user for all damages, losses, and causes of action, shall not exceed the total purchase price paid for the product that gives rise to the claim.

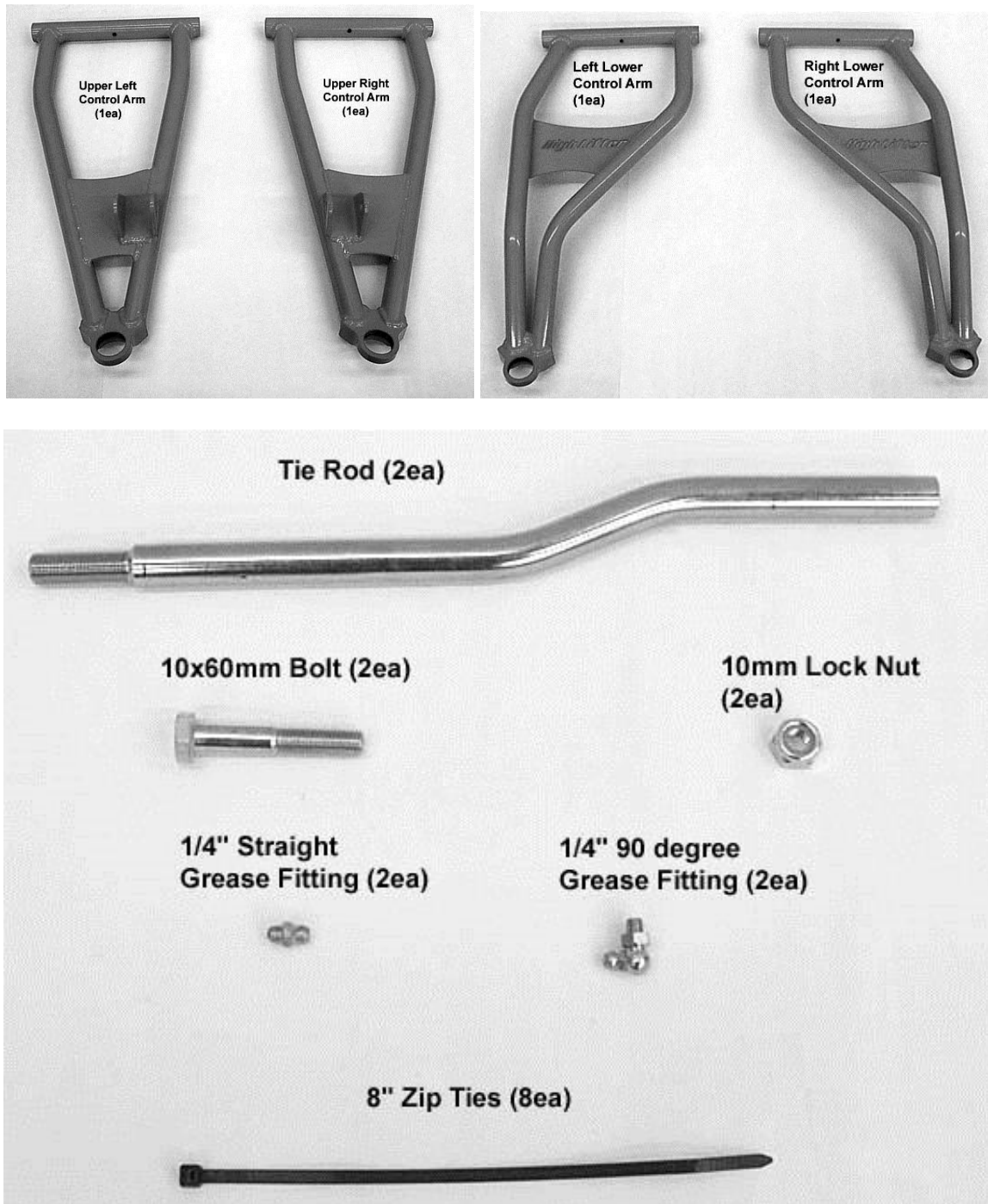
If this product is not what you expected, or is not consistent with your intended use, you should return the product immediately to the seller, before installation, for a refund of the purchase price; less any fees. After installation, product is warranted for 90 days for defects in workmanship and materials. High Lifter Products will warranty only parts provided by High Lifter Products. Any damage or problems with OEM housings, bearings, seals, or other manufacturer's products will not be covered by High Lifter Products. Parts and products will not be warranted if item was not installed properly, misused, or modified.

Dealers and other Installers

You are responsible for informing your customer and end user of the information contained above and the increased potential hazards of operating an ATV and/or RUV equipped with modified suspension components. If you install any suspension modifying components, it is your responsibility to also install the warning label prominently in view of the driver and in prominent view of the driver and passenger on RUVs and multi-passenger ATVs. They should also be instructed to notify anyone operating the vehicle, as well as any passengers, that said vehicle is modified.

As discussed above, it is critically important that they be instructed in the need for slower speed operation, regardless of terrain, after this lift kit is installed.

Parts Diagram



Installation Instructions:

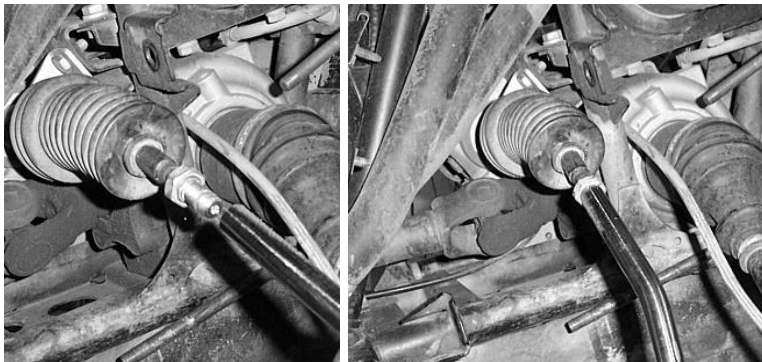
1. Place jack under center of front end and lift until front wheels clear the ground. Be careful to support the UTV properly so that it is securely supported but so that A-arms and shocks can droop to full extension.
2. Remove front wheels.
3. Remove both upper and lower A-arms from the UTV. You do not need to remove the front plastic guard completely. Just remove the two lower bolts that hold it in place. You will be able to pull the plastic back enough that you can remove the bolt that holds the lower control arm in place.



4. Disconnect the tie rod from the rack & pinion and from the knuckle assembly.



5. Attach the new tie rod to the rack & pinion. Run the stock nut all the way down on the stud that sticks out from the rack. Then connect the new rod to that stud.



6. On the opposite end of the rod make sure to thread the stock jam nut on it, running it all the way to the bottom of the threads. Do not connect to the knuckle at this time.



7. Now remove the bushings, sleeves, and ball joints from the stock control arms. You will need to reuse these in the new forward a-arm kit.



NOTE: A press or a vise is suggested for removing and replacing the ball joints. If you press in the ball joint crooked, **DO NOT TRY TO FORCE IT IN!** If you try to force it straight you can “egg” the opening. Press the ball joint out and reinsert it into the opening, pressing it in with a vise. Verify that the clip snaps into place after installing the ball joints into the new Control Arm. You should always double check the ball joint snap ring for proper fit. Even if you use snap ring pliers, it may not seat. You can use a flathead screwdriver and a hammer to tap the snap ring to ensure that it is seated into the groove.

8. Install the grease fittings supplied in the kit into the new arms. The straight fittings go on the lower arms and the 90 fittings go on the upper arms.

DO NOT OVER TORQUE FITTINGS!



9. Now reinstall the bushings, sleeves, and ball joints into the new arms. If you place some grease on them it makes the installations easier.

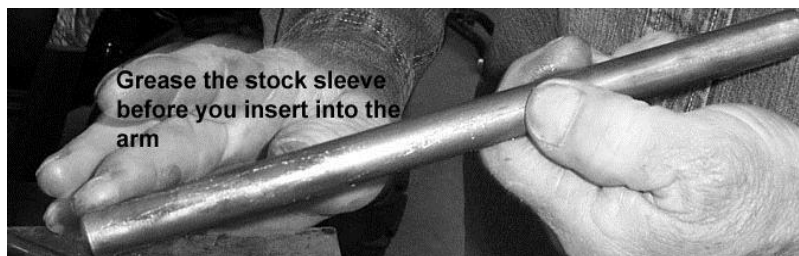
Ball Joint Installation:



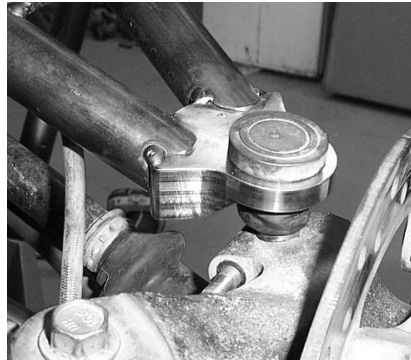
NOTE: A press or a vise is suggested for removing and replacing the ball joints. If you press in the ball joint crooked, **DO NOT TRY TO FORCE IT IN!** If you try to force it straight you can “egg” the opening. Press the ball joint out and reinsert it into the opening, pressing it in with a vise. Verify that the clip snaps into place after installing the ball joints into the new Control Arm.

You should always double check the ball joint snap ring for proper fit. Even if you use snap ring pliers, it may not seat. You can use a flathead screwdriver and a hammer to tap the snap ring to ensure that it is seated into the groove.

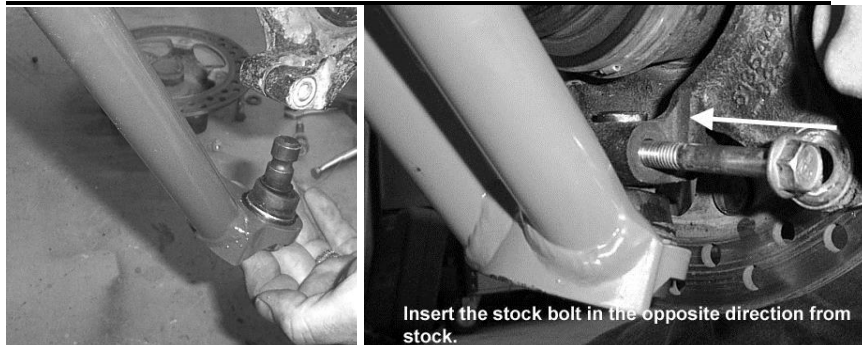
Bushing and Sleeve Installation:



10. Use the factory nuts and bolts to connect the new A-arms to the UTV frame. You will have left and right upper and lower A-arms.



11. When reconnecting the lower arm to the knuckle assembly, install the bolt in the opposite direction from stock. Using the 10mm x 60mm bolt and 10mm lock nut provided, insert it from rear to front. **VERY IMPORTANT TO DO THIS OR IT WILL HIT THE ARM!**

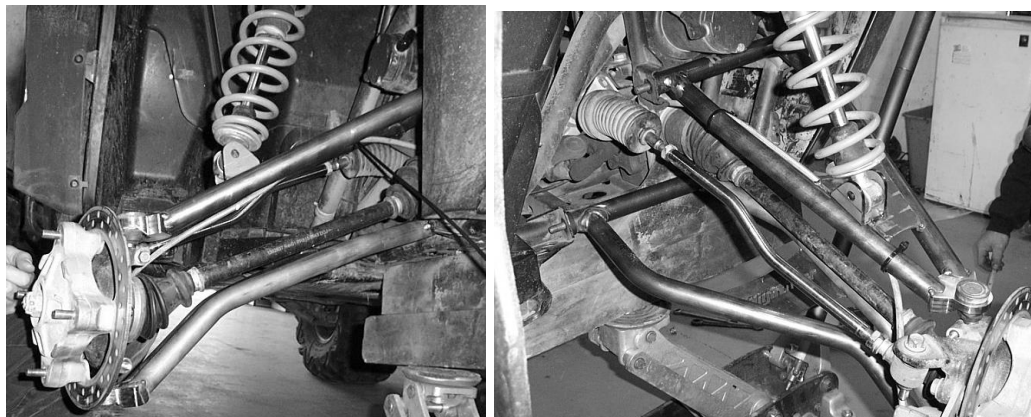


12. Once you have installed the new forward arms, reconnect the tie rod end to the knuckle assembly using the factory hardware.

NOTE: See notes on aligning the front wheels at the end of instructions!



13. Make sure to insert factory approved grease into the new fittings and use zip ties to secure the brake line to the arm.

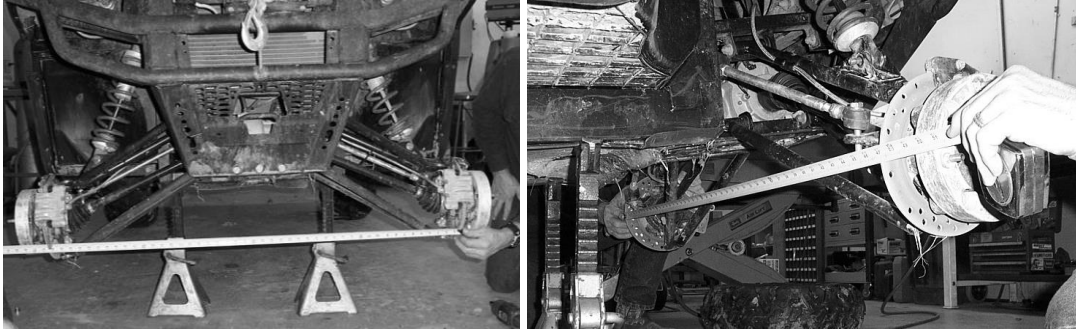


14. Place wheels back on UTV torque lugs to factory specifications.

Aligning the front wheels

1. Make sure that the brake rotors are straight to sight.
2. Take a tape measure and measure from inside to inside on the front and back ends of the rotors.
3. They must both be the same distance. If they do not then you will need to adjust the tie rods in or out.

NOTE: A slight toe out makes the steering less sensitive and the UTV more stable. When adjusting the toe, be sure to take the time to adjust both ends half the required distance.



Thank You
For Choosing
High Lifter
PRODUCTS



High Lifter Lifetime Warranty

From the beginning, High Lifter has engineered and manufactured some of the toughest, most durable products on the market. That's why this product comes with a Lifetime Warranty. It's our promise that High Lifter will never let you down.

- The **Lifetime Warranty** covers products sold to the original purchaser only and is not transferable. The term of the warranty is for the lifetime of the vehicle in question.
- Normal wear and tear items and finishes, such as, but not limited to: Heim joints, tie rod ends, ball joints, bearings, seals, bushings, bushing sleeves, zinc plating , powder coating, or chipping and discoloration of any finish is not covered.
- High Lifter will ship the replacement product after the returned product has been inspected by High Lifter staff.
- The warranty shall not include claims for damages, installation time or labor charges, economic losses, inconvenience, transportation, towing, down time, direct or indirect or consequential damages or delay resulting from any defect.
- The warranty does not apply to products that have been improperly applied or improperly installed.

Making a warranty claim

1. All claims must be accompanied by the part and the original sales receipt or other acceptable proof of purchase from the original owner.
2. All warranties must be accompanied with a Return Merchandise Authorization (RMA) number. (Contact High Lifter at 318-524-2270 or 800-699-0947 for an RMA number)
3. When shipping the damaged product:
 - a. Write the RMA number on the outside of the box.
 - b. Also include the RMA number, proof of purchase and any notes inside the box.
 - c. Please keep your tracking number and shipment information.
4. The customer is responsible for shipping the product to High Lifter--return shipping within the lower 48 states will be paid by High Lifter products. With all warranty claims, only standard shipping services apply.
5. High Lifter will process your order within 24 business hours of receiving the returned item.
6. **Ship to:** High Lifter Products, 780 Professional Drive North, Shreveport, Louisiana 71105