



780 Professional Drive N. Shreveport, LA 71105 Phone (318)-524-2270 Fax (318)-524-2297

RK-FR-P800

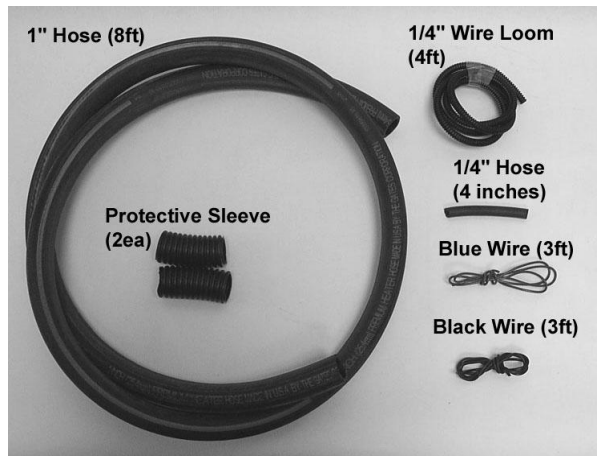
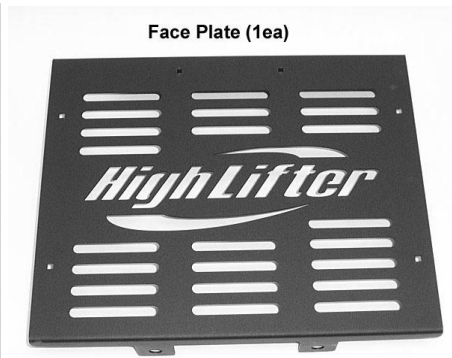
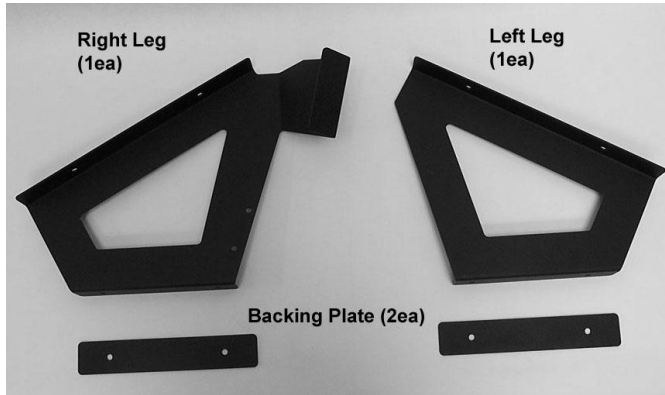
Polaris Sportsman Radiator Relocation Kit

WARNING:

Be advised that there are certain hazards of burning or scalding, that are created by installing radiators with potentially boiling hot fluids in locations other than those selected by the ATV manufacturer. By relocating the radiator, the customer and installer indicate that they understand and accept all risks and liability that are or may be created by moving the vehicles radiator to a non standard location. The purchaser and installer hereby release High Lifter and it officers and employees from any and all potential responsibility that may arise from installation of this radiator relocation kit. It is also the duty of the installer or purchaser to inform the rider or next owners of these potential hazards.

Upon completion verify all hoses and wires are not touching or rubbing the plastic. Vibration **WILL** rub a hole in the lines very quickly. Zip-tie all lines and hoses securely.

Parts Diagram

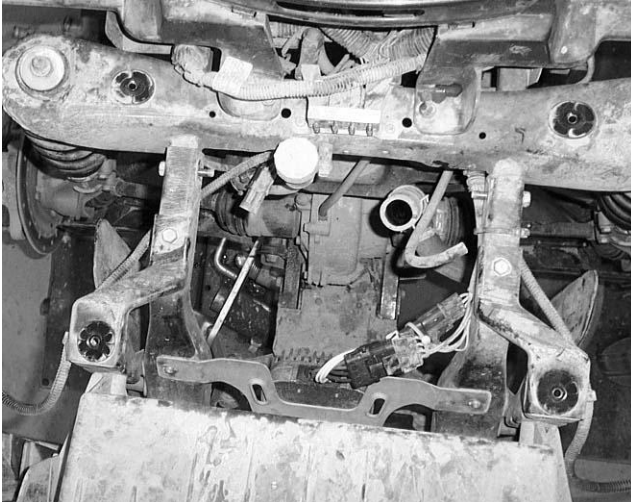


Installation Instructions

1. Remove front plastic from ATV.



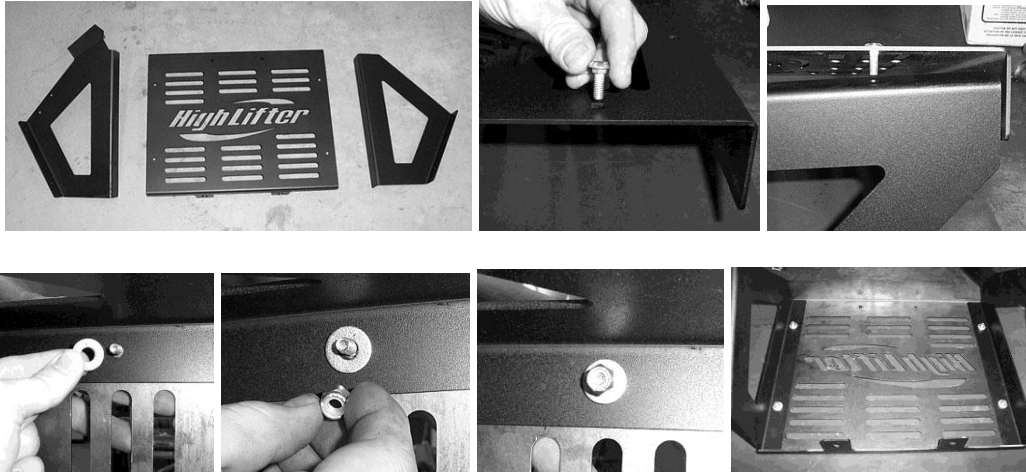
2. Drain the stock radiator and dispose of used fluid according to your local regulations. Use care in disposal, antifreeze is toxic.
3. Remove the stock radiator and unplug the fan from the ATV.



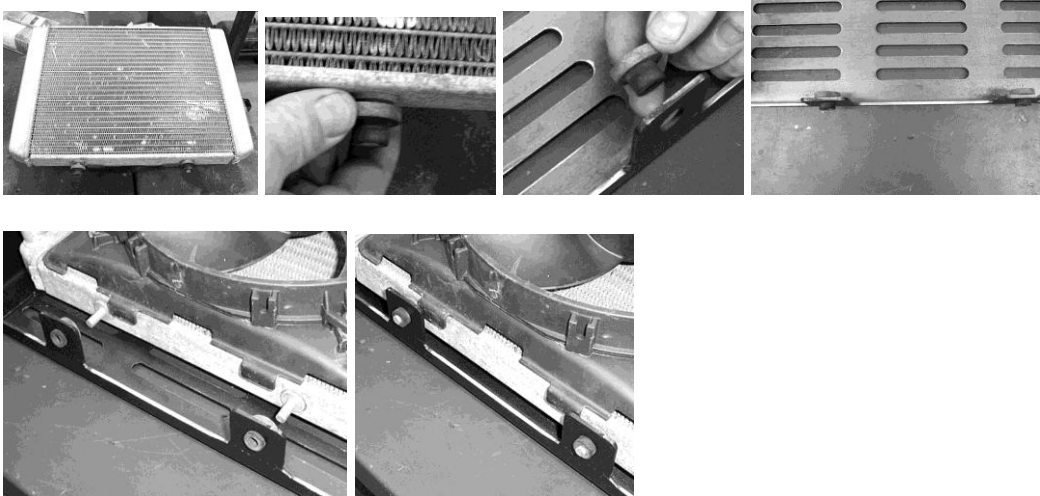
4. Leave stock radiator hoses attached to the engine.
5. Bolt plastic and front rack/storage box back onto the ATV.



6. Preassemble the new radiator relocating kit. Assemble the frame using the $\frac{1}{4}$ x $\frac{3}{4}$ carriage bolts (4ea), $\frac{1}{4}$ lock nuts (4ea), and $\frac{1}{4}$ flat washers (4ea).



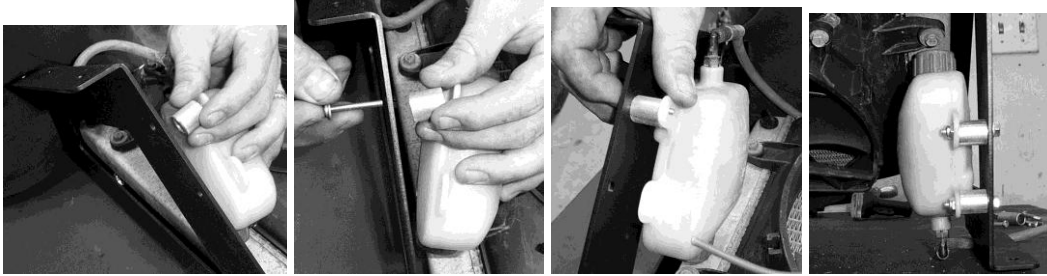
7. The bottom of the stock radiator has two rubber grommets that you will need to place in the holes at the base of the new face plate. Once they are installed insert the bottom of the radiator into the grommets.



8. Attach the radiator to the kit. Insert the $\frac{1}{4}$ x $3\frac{1}{2}$ carriage bolts through the top of the face plate. Place the two large spacers onto the bolt. Next place the radiator onto the bolts and spacers, then fasten the radiator with the $\frac{1}{4}$ flat washers and $\frac{1}{4}$ lock nuts.



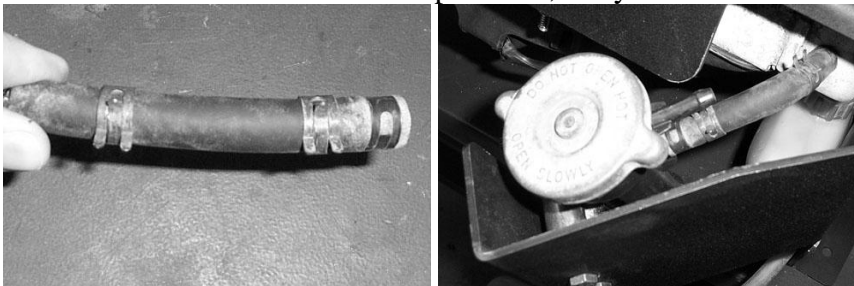
9. Now attach the overflow bottle to the right leg of the rack mount kit. You will need to use the two small spacers, 6 x 35mm bolts, 6mm lock nuts and washers. You will need to thread the bolt through the plastic. The bolt is a little oversized for the hole.

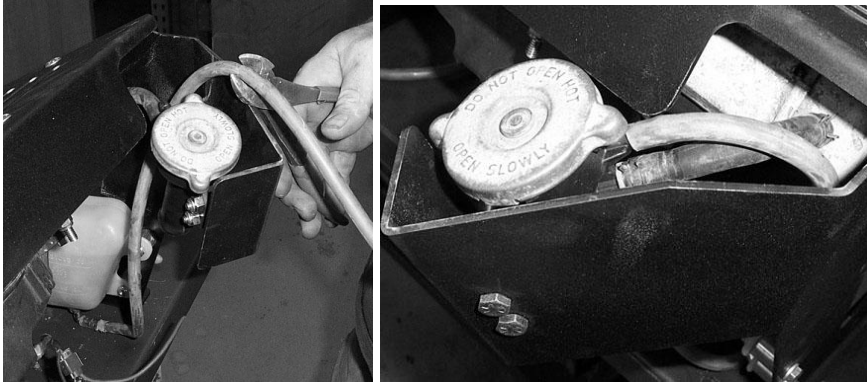


10. Next attach the filler neck and radiator cap to the top of the right leg of the rack mount kit. Use two of the medium spacers, 1/4 x 2 1/4 bolts and 1/4 lock nuts.



11. Attach the hoses from the neck to the radiator and from the neck to the overflow bottle. You will need to reuse the small OE clamps to hold the hose in place from the neck to the radiator. The small black hose is provided, but you will need to cut the overflow line.





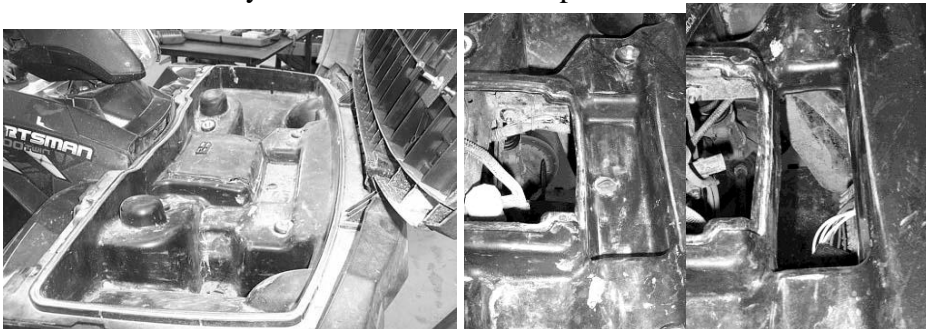
12. Once the kit is assembled, place the kit on the front rack and mark the holes that need to be drilled to allow the hoses and wires for the fan will pass through the rack.

NOTE: YOU WILL NEED TO OPEN AND CLOSE THE BOX FOR OF THE REMAINING ASSEMBLY. MOST OF THE ILLISTRATIONS ARE TAKEN WITH THE BOX OPEN AND THE RADIATOR CONNECTED TO THE RACK.

13. Place the radiator assembly on the rack and mark holes for attaching the radiator to the rack, hoses, and fan wire. We will show where we placed ours, but this is only a suggestion on how to run the hoses and wires. You may want to run yours differently! When cutting holes for hoses and wires make them large enough so that you will be able to put protective sleeves around the water hoses and wire loom around the wires!



14. You will also need to cut a hole under the lid for the water hoses and fan wires. This will allow them to freely move when the lid is open.



15. When the holes are drilled and cut, attach the radiator kit to the top of the rack/lid using $\frac{1}{4}$ x 2 $\frac{1}{4}$ bolts, $\frac{1}{4}$ " lock nuts, $\frac{1}{4}$ " washers and the flat backing plates.



16. Now connect the hoses to the radiator and radiator filler neck. Before you start to connect hoses make sure that you have the stock T-fitting that was originally connected to the filler neck.



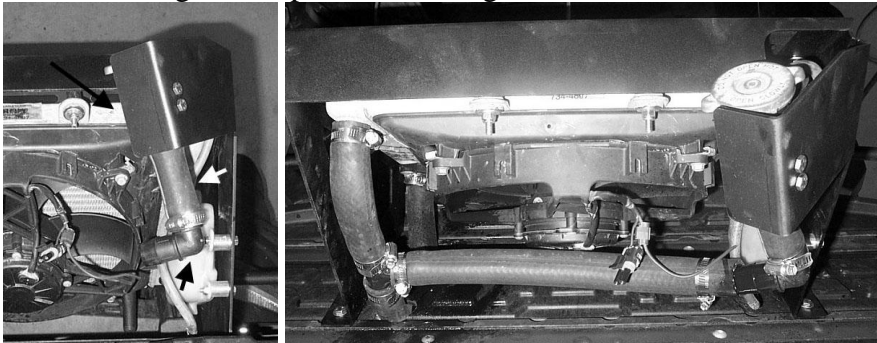
17. Run the hoses from kit to the inlet and outlet hoses that are still attached to the engine. You will need to cut to length. Using the clamps provided in the kit connect the hoses to the inlet and outlet ports on the radiator. You will join the new hoses to the old hoses you left attached to the engine using the fittings and clamps provided in the kit.



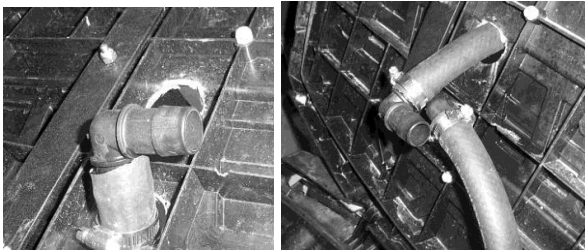
18. Once you connect the hoses to the inlet and outlet ports on the radiator, connect the filler neck water line to the inlet.
19. Use the T-fitting and 90° fitting and hose clamps. Connect the T-fitting to the inlet port using enough hose to center the fitting between the port at the top of the radiator and top of the lid. Let enough hose run through the top of the lid to connect a 90° fitting jut under the lid.



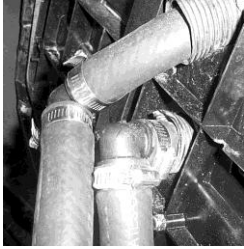
20. Connect 3" of black hose to the filler neck and a 90° fitting. Now run enough hose over to the T-fitting and clap it to the fitting.



21. Insert 90° fittings into the hoses under the radiator and lid. Now connect hose to the 90° fittings and run them down to the stock hoses still connected to the engine.



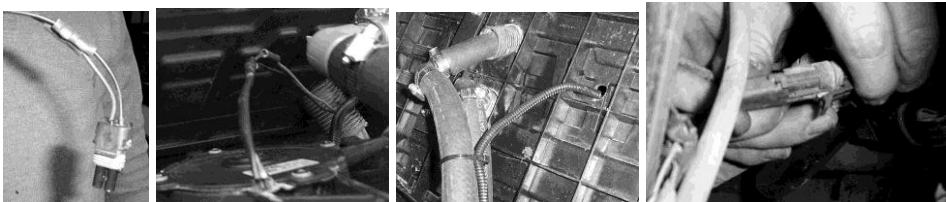
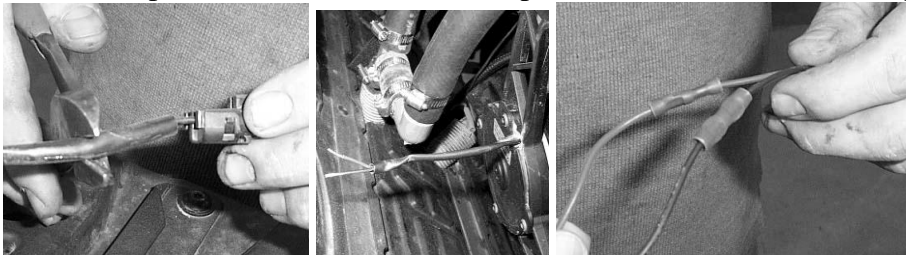
22. **VERY IMPORTANT:** Place the protective sleeve around the hoses to keep them from rubbing on the rack. If the hose is left unprotected the vibration of the hose against the rack will cause a hole to form in the hose.



23. Connect the hose to the stock hoses using the 90° fittings and clamps. Make sure to leave yourself enough hose so that you can still open the rack/lid.



24. Next, cut the wire connector on the back of the fan and extend it using the wires and butt connectors provided. (Make sure to wrap connectors with electrical tape & wire loom)



25. Make sure to wrap all wires using the wire loom provided in the kit to prevent rubbing.
26. Use all zip ties provided in the kit to secure all lines, hoses, and wires so that they do not allow rubbing.
27. Make sure you have enough hose to allow you to open and close the lid.
28. Fill radiator with fluids according to factory specifications.



High Lifter Lifetime Warranty

From the beginning, High Lifter has engineered and manufactured some of the toughest, most durable products on the market. That's why this product comes with a Lifetime Warranty. It's our promise that High Lifter will never let you down.

- The **Lifetime Warranty** covers products sold to the original purchaser only and is not transferable. The term of the warranty is for the lifetime of the vehicle in question.
- Normal wear and tear items and finishes, such as, but not limited to: Heim joints, tie rod ends, ball joints, bearings, seals, bushings, bushing sleeves, zinc plating , powder coating, or chipping and discoloration of any finish is not covered.
- High Lifter will ship the replacement product after the returned product has been inspected by High Lifter staff.
- The warranty shall not include claims for damages, installation time or labor charges, economic losses, inconvenience, transportation, towing, down time, direct or indirect or consequential damages or delay resulting from any defect.
- The warranty does not apply to products that have been improperly applied or improperly installed.

Making a warranty claim

1. All claims must be accompanied by the part and the original sales receipt or other acceptable proof of purchase from the original owner.
2. All warranties must be accompanied with a Return Merchandise Authorization (RMA) number. (Contact High Lifter at 318-524-2270 or 800-699-0947 for an RMA number)
3. When shipping the damaged product:
 - a. Write the RMA number on the outside of the box.
 - b. Also include the RMA number, proof of purchase and any notes inside the box.
 - c. Please keep your tracking number and shipment information.
4. The customer is responsible for shipping the product to High Lifter--return shipping within the lower 48 states will be paid by High Lifter products. With all warranty claims, only standard shipping services apply.
5. High Lifter will process your order within 24 business hours of receiving the returned item.
6. **Ship to:** High Lifter Products, 780 Professional Drive North, Shreveport, Louisiana 71105