

FreedomCharge Max Installer Kit (Kit # FDMC-1310)

Visit Brandmotion.com/1310Tempate for FAQ's and vehicle specific templates!

Please read thoroughly before starting installation and check that kit contents are complete.

Items Included in the Kit:

Qi Wireless Charging Module
Full Size Substrate
Full Size Non Slip Mat
Power Harness with 3 amp Fuse
Foam Blocks
Double Sided Tape
These Instructions with Trim Template
Removable Consumer Product Label

Tools & Supplies Needed:

Plastic Trim Removal Tool
Phillips Screwdriver (if needed)
7mm, 10mm Socket Drive (if needed)
Center Punch/Scribe Tool
Power Drill
3/8" and 1/2" Drill Bit
Scissors
X-Acto Knife
Wire Ties
Soldering Iron & Solder (Recommended)
Tape or Heat Shrink Electrical Tubing
Multi Meter or 12V test light

***Note this product is designed to work with Qi compatible devices. Please confirm that your device is Qi compatible before installation. Visit www.brandmotion.com for phone compatibility guide.**

Safety Precautions:

- Work in well ventilated area that is clear of obstructions.
- Secure vehicle with tire chucks in both front and rear of tires.
- Turn vehicle accessories OFF and ensure ignition key is in OFF position.
- Wear safety goggles and snug fitting clothes.
- Use tools only for their intended purpose and which are in good repair.
- Only perform this task if confidence, skill, and physical ability permit.

This kit is designed to be customized to fit your specific vehicle application. The following instructions will be your guide to show you the basic steps of the installation. Your vehicles installation may vary from these steps shown in these instructions.

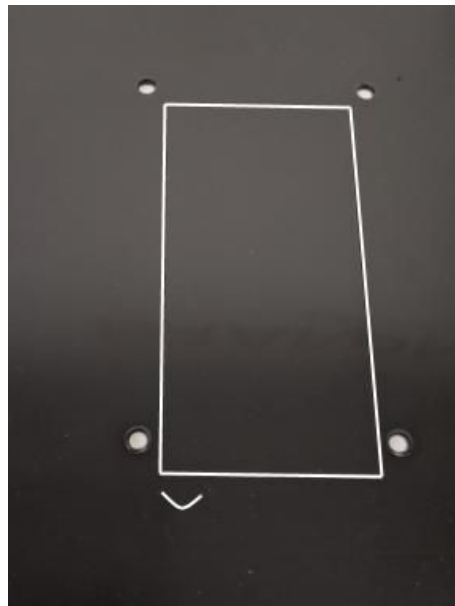
IMPORTANT: Do not place smart keys within 6 inches of charging mat. Vehicle may not detect key to start vehicle. Do not place metal objects in tray while charging.

Mounting module to substrate

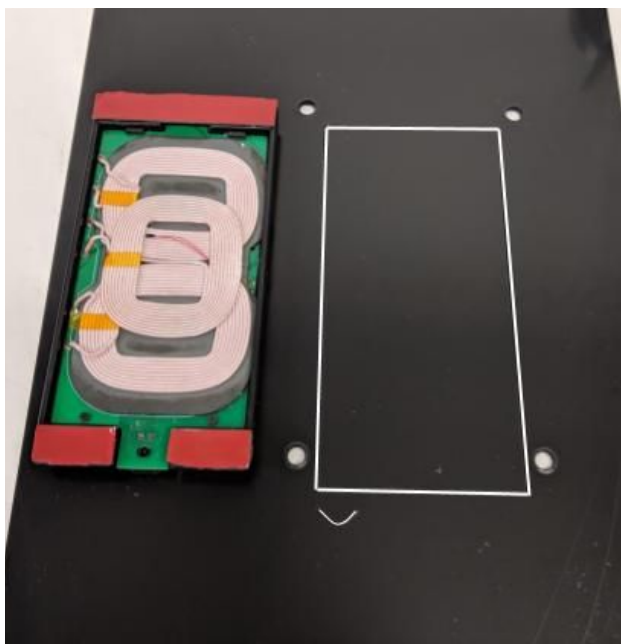
Side A: No Outlines



Side B: Square Outline w/ Carrot Locator



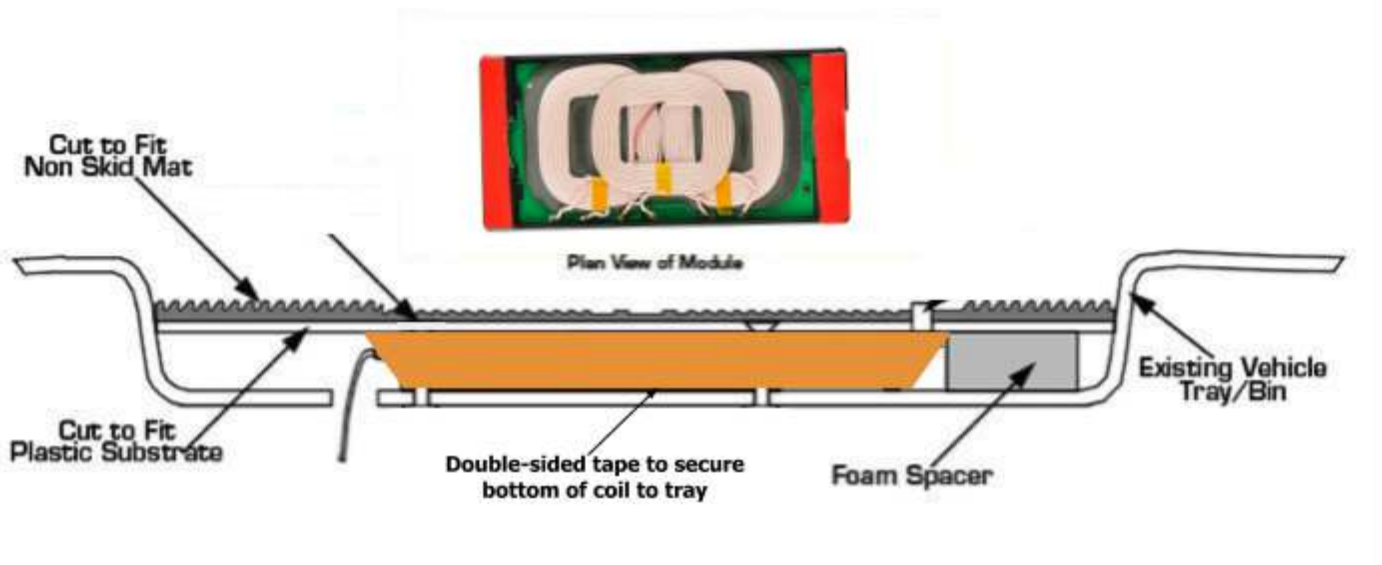
On Side B, Align square outline with outer edges of coil and with the connector on the same side as the small carrot for mounting



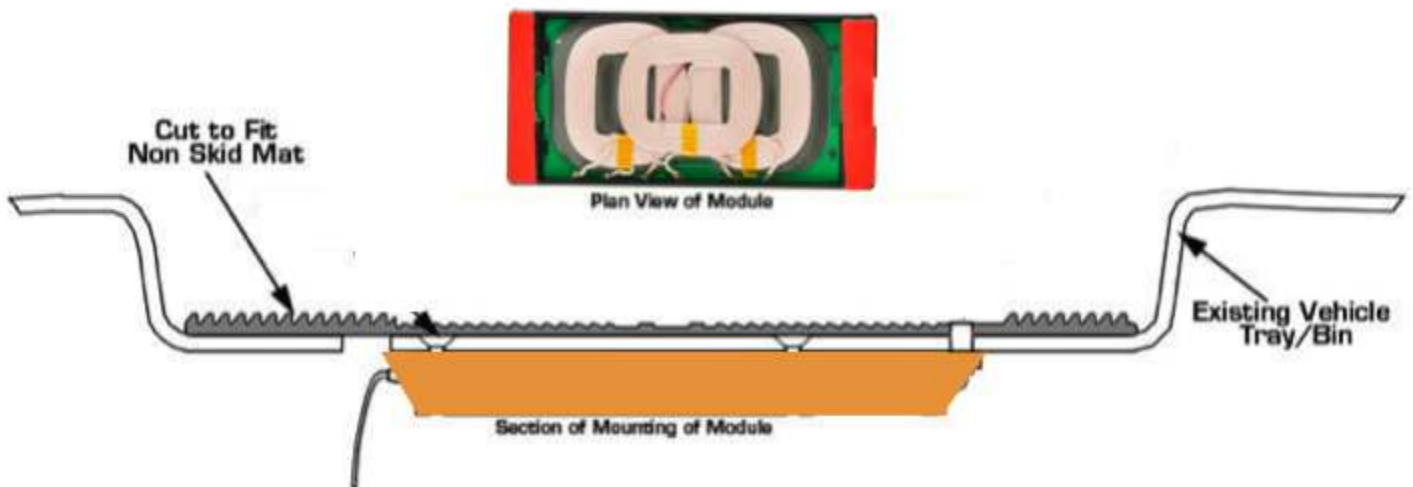
Section 1: The two Types of Mounting

Freedom Charge™ has been designed with two unique mounting possibilities to fit almost any application. Please review sections below to determine the best solution for your particular application. Note: Due to high heat and sun exposure, the top of the dash is not a recommended location for mounting Freedom Charge.

Drop-In Mounting (from above)



Under Mounting



Section 2: Substrate and Mat Development

These next steps illustrate the process of creating your vehicle specific Freedom Charge integrated solution.

Step 1: Using the Freedom Charge Module determine the best location for installation.



Step 2: If chosen location has mat, remove to add in making template otherwise carefully cut template to fit. Always start larger and slowly trim down to ensure best fit. Make sure to account for draft as the Freedom Charge Module is about 1/2" thick. If using the Drop-In method of attachment, a mat at the bottom of a drafted bin may be slightly smaller than your final substrate and mat solution.



Step 3: Template is full size representation of module with recommended minimum area.



Step 4: Align mat on template in desired location. Trace outline centering the module.



Step 5: With scissors trim template on traced lines.



INSTALLATION INSTRUCTIONS

Step 6: With trimmed template placed on top of Freedom Charge module check for correct fit in vehicle. Make any trim adjustment(s) needed to template to achieve perfect fit.



Step 7: Cut out the four holes found on the mat/substrate template and place template on plastic substrate aligning mounting holes. Make sure you're placing your cutout template face up on Side A (without outline) before scoring the substrate



Step 8: Scribe outline.

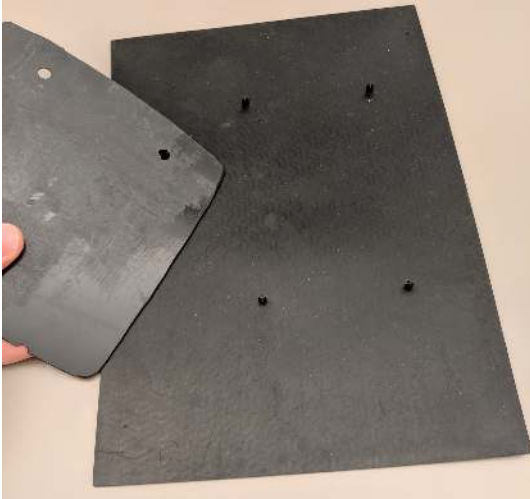


Step 9: Substrate can be trimmed with scissors. Be careful to cut right on the scribed line. Again check fit in vehicle.

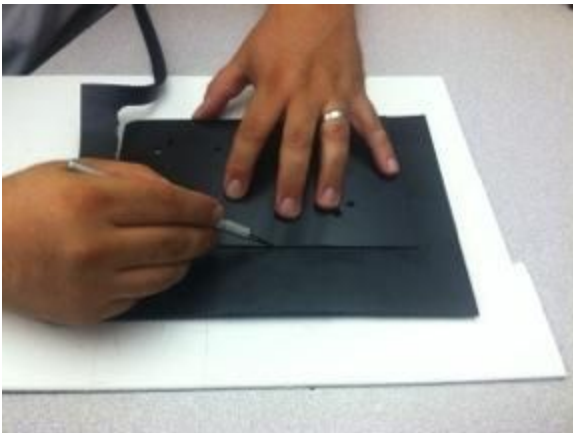


INSTALLATION INSTRUCTIONS

Step 10: Flip Freedom Charge mat and newly trimmed substrate upside down (Side B of substrate facing up).



Step 11: Using an X-Acto knife, carefully trim mat using substrate as guide.



Step 12: Substrate and Mat now trimmed and ready for assembly and mounting.



Section 3: Drop-In Mounting

Step 1: Remove the plastic cover from the double sided tape on the top side of the charging coil. Using the mounting directions found on Page 2, attach your coil to Side B of the substrate

Step 2: Place new assembly into vehicle tray or bin to mark 1/2" hole location required for power connector to pass through. Drill 1/2" hole in marked location.



Step 3: Route Plug of power harness through 1/2" hole and place module in bin.

INSTALLATION INSTRUCTIONS

Step 4: Apply supplied double sided tape to the bottom of charging coil. Double check fitment of coil, substrate, and mat before removing the plastic from the bottom side of double sided tape. Once fitment is verified you can clean the mounting surface of the tray and attach the coil with substrate



Step 5: Install Non-Slip Freedom Charge Mat to Wireless Charging Module. Place the 4 locator pins in corresponding holes.



Step 6: Proceed to Power Harness wiring (Section 5).

Section 4: Under Mounting

Follow the next step if are mounting in a shallow location or have adequate room and accessibility under your surface you are mounting to. Minimum clearance is 5/8" under mounting location and clear of any vehicle wiring of components prior to installation.

Step 1: Using template created in Section 2, mark the (4) mounting holes that will be used to lock the mat in place once the install is complete



Step 2: Drill the (4) 3/16 holes for the non-skid mat location crosshairs.

Step 3: From the bottom, hold Freedom Charge Module up firmly into mounting location. Use the (4) 3/8" holes as guides to mount your Charge Module underneath the tray where it will be in the center of the Non-skid mat.



Step 4: Place non-skid mat on topside of tray/bin with the crosshair locators aligned.



INSTALLATION INSTRUCTIONS

Section 5: Power Harness Wiring (from above)

Freedom Charge is powered by ignition control 12v power source. Use a Multi-Meter of test light or manual to determine your vehicle power location.

Step 1: Splice Red wire of Power Harness to the 12v ignition wire of the vehicle.

RECOMMENDED: Solder wires and cover with Heat Shrink Tubing.



Step 2: Connect Power Harness grounding eyelet to vehicle ground.



Step 3: Connect Power Harness to Charging Module.



Section 6: Test System and Consumer Label

Step 41: Test system. Power the vehicle up, wait a moment, then rest wireless charging device on mat. When the coil connects you will hear an audible tone indicating that a connection has been made. If you do not hear an audible tone, check power connection and be sure there is no metallic obstructions between the coil and your device.

Step 1: Reassemble vehicle taking care not to bind the harness wiring when reinstalling trim.

Step 2: Place removable consumer product label on center of mat.

