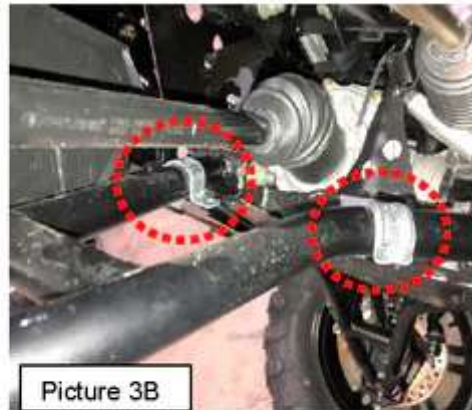


- C. Locate two supplied 1" EMT clamps, two supplied 1/4-20 x 1-1/4" flat head socket cap screws, and two supplied 1/4-20 nylock nuts. Align each of the EMT clamps with the inside holes of the guard. These may need to be tapped onto the a-arm with a small hammer. Once aligned, insert one cap screw into each of the holes, through the EMT clamps, and secure with the nylock nuts. See Pictures 3A and 3B. Repeat for the opposite side.



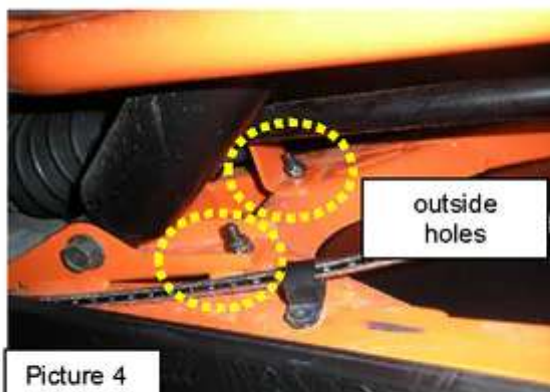
Picture 3A



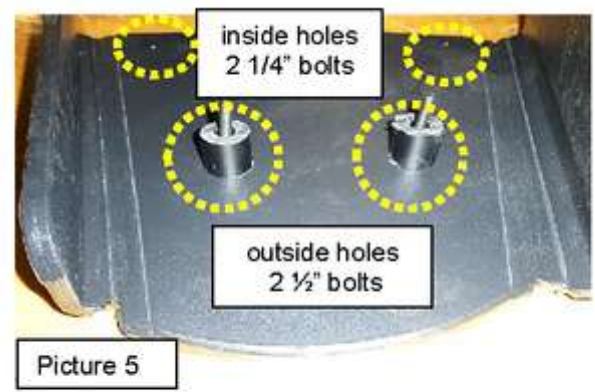
Picture 3B

For Rear Guards

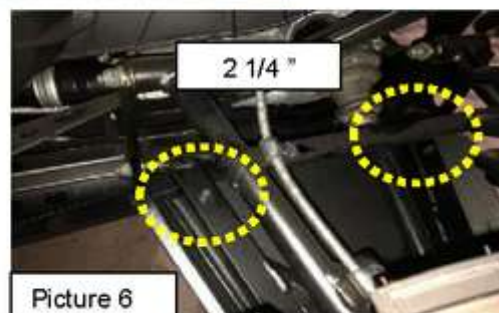
- D. Locate the driver's side rear a-arm guard, the two 1" tube spacers and two 1/4-20 x 2 1/2" FHSC bolts. Locate the two factory drilled holes located behind the lower shock mount as indicated in Picture 4. Insert two 1/4-20 x 2 1/2" FHSC bolts through the two outside holes in the guard. Position tube spacers over the bolts and insert bolt with tube spacers through the two factory drilled holes in the cross brace indicated in Picture 5. Secure loosely using supplied 1/4-20 nylock nuts. Insert two 1/4-20 x 2-1/4" FHSC bolts from the underside of the guard, through the guard and through the a-arm frame. Secure with two 1/4-20 nylock nuts on the bolt ends and finger tighten. See Picture 6.
- E. **Alternate tightening** the nylock nuts until the guard is secure. Repeat procedure for passenger side. Replace tires and wheels and check all lug nuts.



Picture 4



Picture 5



Picture 6



Installation Instructions for
iMPact A-Arm Boot Guards for Polaris Ranger XP 1000 and Ranger XP 1000 Crew
TA011ARMIMP-PR1000XP-21

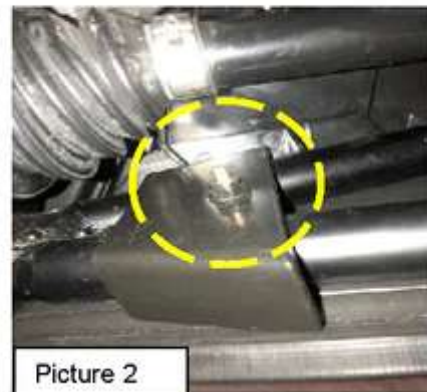
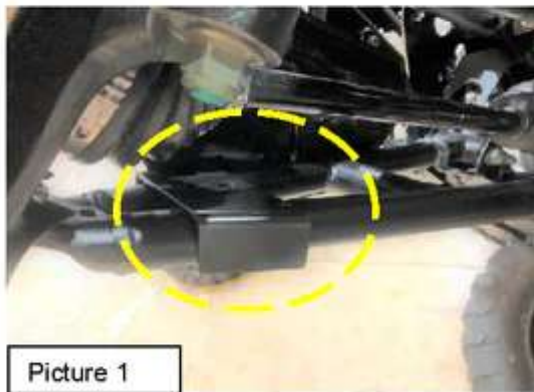
Warnings and Product Liability Disclaimer

This product is intended to be used as a cosmetic accessory under normal equipment operation and should not be depended upon or used as a safety device. Manufacturer assumes no liability for personal injury or equipment damage as the result of use or installation of this accessory. User assumes all risk. User should carefully read all instructions prior to installation.



Remove tires prior to beginning for easier install. Always secure vehicle with safety stands. Leave plastic factory CV shield in place if applicable.

For Front Guards



- A. Locate the supplied driver side metal bracket (RZR570-L) from the Trail Armor set. Insert the bracket over the top of the lower a-arm with the small tab towards the front of the vehicle. See Picture 1.
- B. Locate the driver side Trail Armor a-arm guard. Also, locate one supplied 1/4-20 x 2-1/4" flat head socket cap screw and one supplied 1/4-20 nylock nut. Holding the guard into position, insert the cap screw into the outer pre-drilled hole of the guard, through the metal bracket, and secure with the nylock nut. Loosely tighten. See Picture 2.