



1.877.287.8634

**INSTALLATION INSTRUCTIONS**

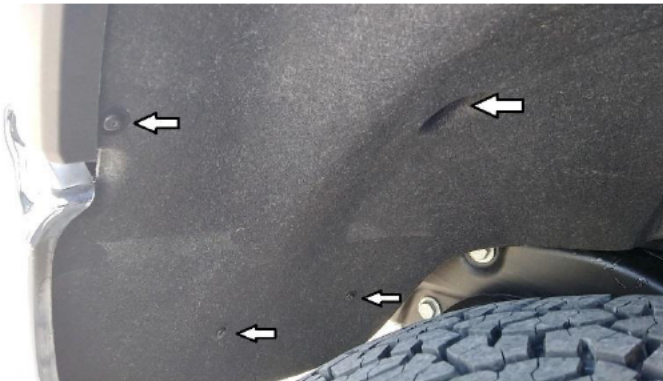
**IMPORTANT NOTICE:** Be sure to inspect and test fit product before having it coated or painted. Ranch Hand will not be responsible for the cost of the coating if any problems with fit or finish are not noted and addressed beforehand.

**2020-up CHEVY 2500HD/3500HD FRONT BUMPER REPLACEMENTS**

**PART #s FBC201BLR / FBC201BLRC / BTC201BLR**

**FSC201BL1 / FSC201BL1C / BSC201BL1**

1. To remove the factory bumper, you will need to remove the factory grille. You will need to remove the side panels first. Start by removing the inner fender well screws. This will allow to get to the back side of the plastic clips. There will also be a small screw in the corner that need to be removed before the side panel can be pulled off.



2. Remove the factory grille. Open the hood and remove the hood release latch by removing two T15 screws. Remove the ten plastic clips holding the plastic shield located above the grille.



----- **WARNING** -----

Special care should be exercised in the handling, storage and installation of Ranch Hand equipment. The actual weight of each piece of equipment will vary depending on style and model. The weight of the equipment is sufficient in volume to warrant special care, assistance and in some instances, the use of mechanical equipment during the transfer and installation of the equipment. Do not assume a position directly under the equipment during installation. Be sure the equipment has been connected and stabilized during installation to prevent falling or shifting of positions. Periodically check tightness of bolts to make sure they are tight, and unlikely to fail.

Rev. 2021

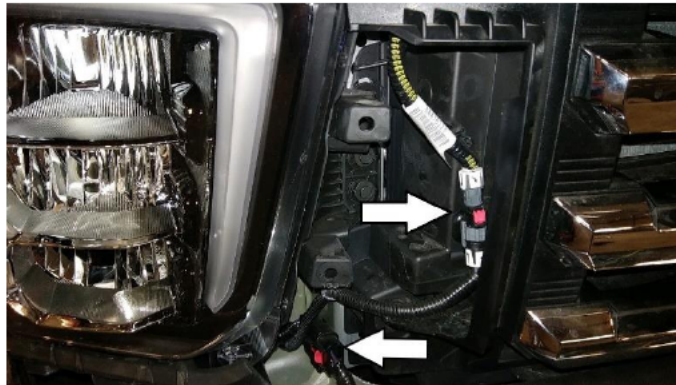


1.877.287.8634

### **INSTALLATION INSTRUCTIONS**

**IMPORTANT NOTICE:** Be sure to inspect and test fit product before having it coated or painted. Ranch Hand will not be responsible for the cost of the coating if any problems with fit or finish are not noted and addressed beforehand.

3. Disconnect the sensor/fog light wiring harness. Also, if vehicle is installed with a front camera, unhook the connector. The grille can then be removed by remove (4) 10mm bolts on top and (4) 10mm (two on each side) from the sides.



4. Remove the factory side brackets. There will be (3) 15mm bolts on each side.



5. On vehicle is with diesel motors, unplug the block heater plug.



6. Remove the factory bumper by removing the (2) 18mm bolts from each side of the frame. They will be facing down.

### ----- WARNING -----

Special care should be exercised in the handling, storage and installation of Ranch Hand equipment. The actual weight of each piece of equipment will vary depending on style and model. The weight of the equipment is sufficient in volume to warrant special care, assistance and in some instances, the use of mechanical equipment during the transfer and installation of the equipment. Do not assume a position directly under the equipment during installation. Be sure the equipment has been connected and stabilized during installation to prevent falling or shifting of positions. Periodically check tightness of bolts to make sure they are tight, and unlikely to fail.  
Rev. 2021

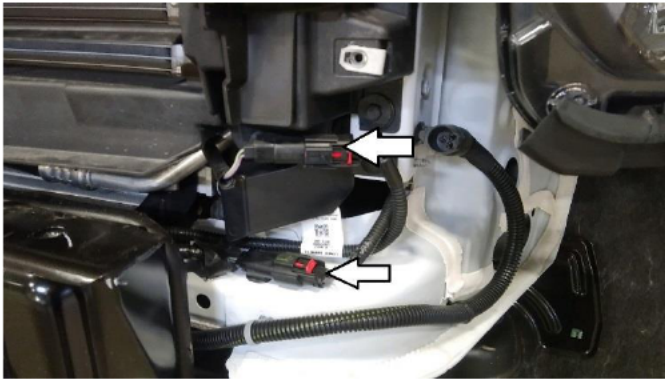


1.877.287.8634

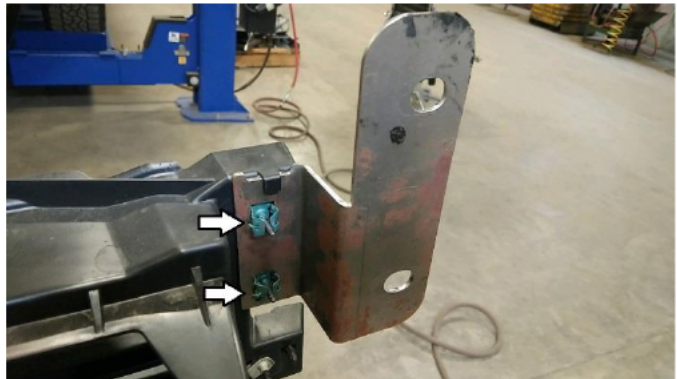
### **INSTALLATION INSTRUCTIONS**

**IMPORTANT NOTICE:** Be sure to inspect and test fit product before having it coated or painted. Ranch Hand will not be responsible for the cost of the coating if any problems with fit or finish are not noted and addressed beforehand.

7. Lay the bumper down then remove the sensor and fog light wiring harness and block heater plug (if present) from the bumper. You will have to remove the (2) large black bumper support plates to remove sensors.
8. Reinstall the factory grille, plastic radiator cover and side panels.
9. Unplug and remove the lower louvered air duct panel.



10. Pop out the clips and insert them in the provided brackets.



11. Remove the two black bumper mounting plate by removing the (4) 15mm bolts. The bolts will be used to install the Ranch Hand Frontend.
12. Mount the frontend to the frame by reusing the 15mm factory bolts. Level the frontend and then tighten bolts.
13. Mount the bottom brackets to the tow hook holes. Remove the tow hook bolts and use the 5" x 1/2" bolts to install. Use the 1/2" black carriage bolts to mount the frontend to the bottom brackets. *(Note: The extra black carriage bolts and hardware are for installing fog light brackets.)*
14. Mount the license plate using 1/4" bolts to the bottom grille insert.

### ----- WARNING -----

Special care should be exercised in the handling, storage and installation of Ranch Hand equipment. The actual weight of each piece of equipment will vary depending on style and model. The weight of the equipment is sufficient in volume to warrant special care, assistance and in some instances, the use of mechanical equipment during the transfer and installation of the equipment. Do not assume a position directly under the equipment during installation. Be sure the equipment has been connected and stabilized during installation to prevent falling or shifting of positions. Periodically check tightness of bolts to make sure they are tight, and unlikely to fail.  
Rev. 2021

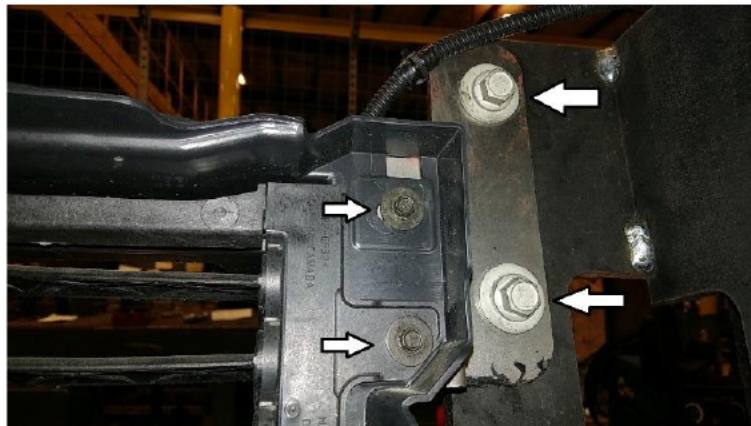


1.877.287.8634

### **INSTALLATION INSTRUCTIONS**

**IMPORTANT NOTICE:** Be sure to inspect and test fit product before having it coated or painted. Ranch Hand will not be responsible for the cost of the coating if any problems with fit or finish are not noted and addressed beforehand.

15. Mount the louvered air duct and brackets to the inside bolts of the replacement bumper.



16. Hook up the sensor and fog light wires. Use the rubber grommets to install the sensors. You can run the wires through the square opening in the mounting brackets just below the top plate. Adjust the lights and sensors if needed.

17. Install the fog lights using brackets and instructions from LBC19HBP.

18. On the driver side end cap, there is a knock-out plug. If you have a diesel motor punch out the opening to install the block heater plug.



***MAKE SURE ALL BOLTS AND NUTS ARE TIGHT!***

### **----- WARNING -----**

Special care should be exercised in the handling, storage and installation of Ranch Hand equipment.

The actual weight of each piece of equipment will vary depending on style and model. The weight of the equipment is sufficient in volume to warrant special care, assistance and in some instances, the use of mechanical equipment during the transfer and installation of the equipment.

Do not assume a position directly under the equipment during installation. Be sure the equipment has been connected and stabilized during installation to prevent falling or shifting of positions.

Periodically check tightness of bolts to make sure they are tight, and unlikely to fail.

Rev. 2021