



1.877.287.8634

INSTALLATION INSTRUCTIONS

IMPORTANT NOTICE: Be sure to inspect and test fit product before having it coated or painted. Ranch Hand will not be responsible for the cost of the coating if any problems with fit or finish are not noted and addressed beforehand.

2018-20 SUMMIT FRONT BUMPERS PART # FSF18HBL1 / BSF18HBL1

1. To remove the factory bumper, you will need to remove the center plastic insert from the bumper. There will be several clips that hold it in place. This will allow you to have access to the bumper bolts.
2. If an Adaptive Cruise Control Module is present, located on the driver side, it will need to be unplugged and removed. It will be installed later.
3. Remove the four bumper nuts, two on each frame rail.
4. Unplug the fog lights if present.
5. There will be two more nuts, one located on each frame rail, that needs to be removed from the backside of the bumper.
6. When removing the factory bumper, there will be three plastic push pins that will need to be removed from the top of the bumper.
7. Remove the factory tow hooks if present.
8. There is a driver (GGF15HBBDBL) and passenger (GGF15HBBPBL) side bottom bracket. Mount the bottom brackets to the bottom of the frame and then the tow hooks. Use the factory bolts to install.
9. If tow hooks are NOT present, use the hex nut tab provided to install the bottom brackets.
10. Leave the brackets loose enough so that they can be moved to line up the replacement bumper grill guard.
11. Mount the Adaptive Cruise Control Module to the Adaptive Cruise Bracket (FSF18HACBBL) provided. Use three ¼" x 1" bolts and nuts provided. Mount the bracket to the angle iron that is located on the underside of the top plate with 5/16" bolts. The A.C.C. module will face forwards.
12. Mount the replacement front bumper to the outside of the bottom brackets with ½" x 1 ½" bolts. Line up the bumper from side to side then tighten the bottom bolts to the frame
13. Line up the bumper to the truck. The holes are slotted so the bumper can be raised or lowered. It also can be leaned forwards or back. Then tighten the bolts.
14. There is a driver (FSF15HTBDBL) and passenger (FSF15HTBPBL) top bracket. Use the factory double bolt-bracket to mount the top bracket to the frame. Mount the single holed side of the bracket to the outside of the upright. If you have fog lights, the fog light bracket will mount to the same hole. Use ½" x 1 ¾" bolt to install. *Note: Use instructions LBF15HBP to install fog light to fog light bracket.*
15. Plug in fog light wires and adjust fog lights.
16. **MAKE SURE ALL NUTS AND BOLTS ARE TIGHT!**

----- WARNING -----

Special care should be exercised in the handling, storage and installation of Ranch Hand equipment.

The actual weight of each piece of equipment will vary depending on style and model. The weight of the equipment is sufficient in volume to warrant special care, assistance and in some instances, the use of mechanical equipment during the transfer and installation of the equipment. Do not assume a position directly under the equipment during installation. Be sure the equipment has been connected and stabilized during installation to prevent falling or shifting of positions.

Periodically check tightness of bolts to make sure they are tight, and unlikely to fail.

Rev. 2021

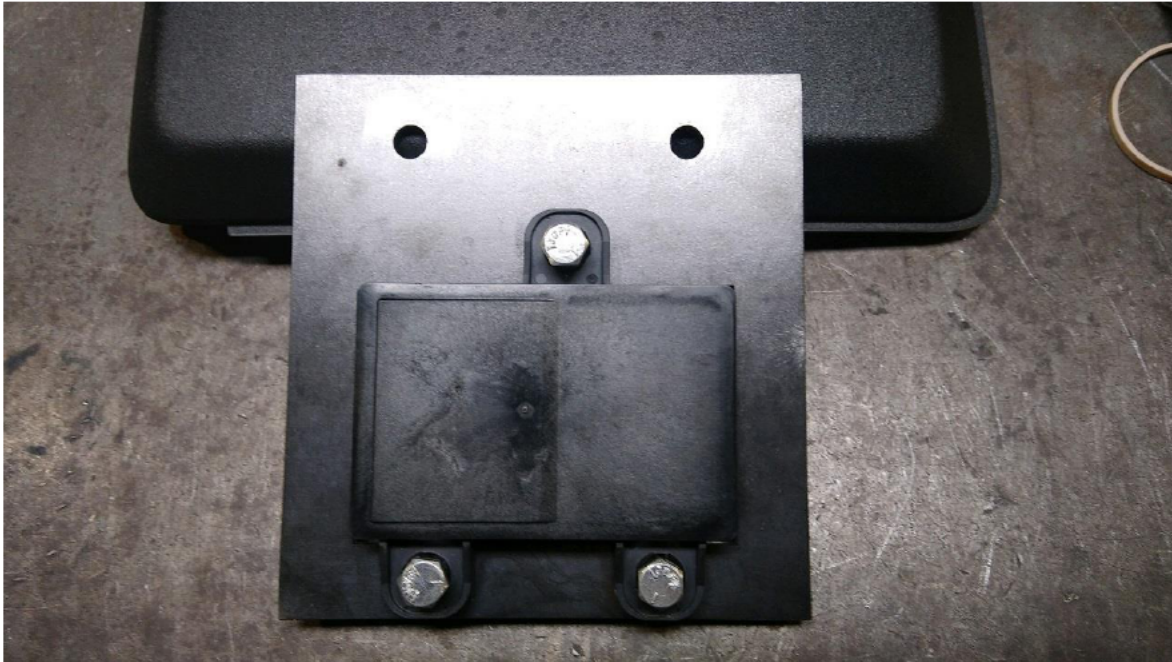


1.877.287.8634

INSTALLATION INSTRUCTIONS

IMPORTANT NOTICE: Be sure to inspect and test fit product before having it coated or painted. Ranch Hand will not be responsible for the cost of the coating if any problems with fit or finish are not noted and addressed beforehand.

2018-20 SUMMIT FRONT BUMPERS – FSF18HBL1/BSF18HBL1
ADAPTIVE CRUISE BRACKET



----- **WARNING** -----

Special care should be exercised in the handling, storage and installation of Ranch Hand equipment.
The actual weight of each piece of equipment will vary depending on style and model. The weight of the equipment is sufficient in volume to warrant special care, assistance and in some instances, the use of mechanical equipment during the transfer and installation of the equipment.
Do not assume a position directly under the equipment during installation. Be sure the equipment has been connected and stabilized during installation to prevent falling or shifting of positions.
Periodically check tightness of bolts to make sure they are tight, and unlikely to fail.
Rev. 2021