



1.877.287.8634

INSTALLATION INSTRUCTIONS

IMPORTANT NOTICE: Be sure to inspect and test fit product before having it coated or painted. Ranch Hand will not be responsible for the cost of the coating if any problems with fit or finish are not noted and addressed beforehand.

**2019-up DODGE RAM 1500 GRILL GUARD
PART # GGD19HBL1C**

****** YOU WILL LOSE YOUR TOW HOOKS ON THIS APPLICATION ******

****** MAKE SURE THE BOTTOM OF FRAME IS CLEAR OF ANY WELD SPATTER ******

1. Remove tow hooks (if applied). Use 18mm and 21mm sockets to remove.
2. Remove the plastic insert that covers the tow hook opening. On tow hook models remove the plastic cover that sits around the tow hook.



3. Loosen the 18mm bolt that goes through the frame to the body mount. On tow hook models, cut off the rubber boot from around the bolt. *See photo*



----- **WARNING** -----

Special care should be exercised in the handling, storage and installation of Ranch Hand equipment. The actual weight of each piece of equipment will vary depending on style and model. The weight of the equipment is sufficient in volume to warrant special care, assistance and in some instances, the use of mechanical equipment during the transfer and installation of the equipment. Do not assume a position directly under the equipment during installation. Be sure the equipment has been connected and stabilized during installation to prevent falling or shifting of positions.

Periodically check tightness of bolts to make sure they are tight, and unlikely to fail.

Rev. 2022



1.877.287.8634

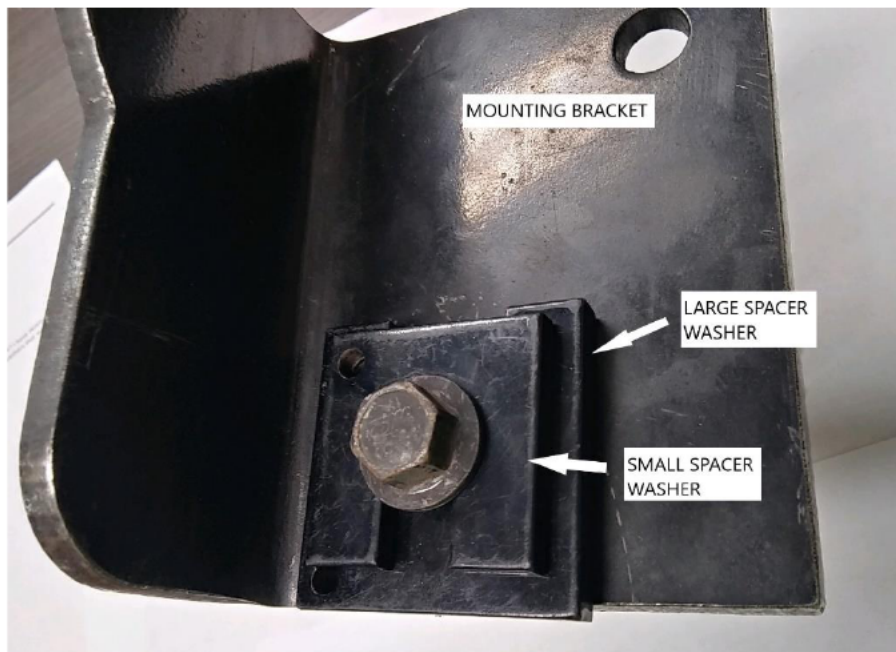
INSTALLATION INSTRUCTIONS

IMPORTANT NOTICE: Be sure to inspect and test fit product before having it coated or painted. Ranch Hand will not be responsible for the cost of the coating if any problems with fit or finish are not noted and addressed beforehand.

4. There is a driver and passenger side mounting bracket (see photo). Slide the bracket through the front of the opening and lined up to the bolt and hole of the bottom of the frame.



5. Install the metric bolt (provided) with a washer through the front frame hole.
6. For the back hole, use one large and one small spacer washer. Place over the factory bolt and hand tighten (see photo).



7. There is a driver and passenger support bracket (see photo).

----- WARNING -----

Special care should be exercised in the handling, storage and installation of Ranch Hand equipment. The actual weight of each piece of equipment will vary depending on style and model. The weight of the equipment is sufficient in volume to warrant special care, assistance and in some instances, the use of mechanical equipment during the transfer and installation of the equipment. Do not assume a position directly under the equipment during installation. Be sure the equipment has been connected and stabilized during installation to prevent falling or shifting of positions.

Periodically check tightness of bolts to make sure they are tight, and unlikely to fail.

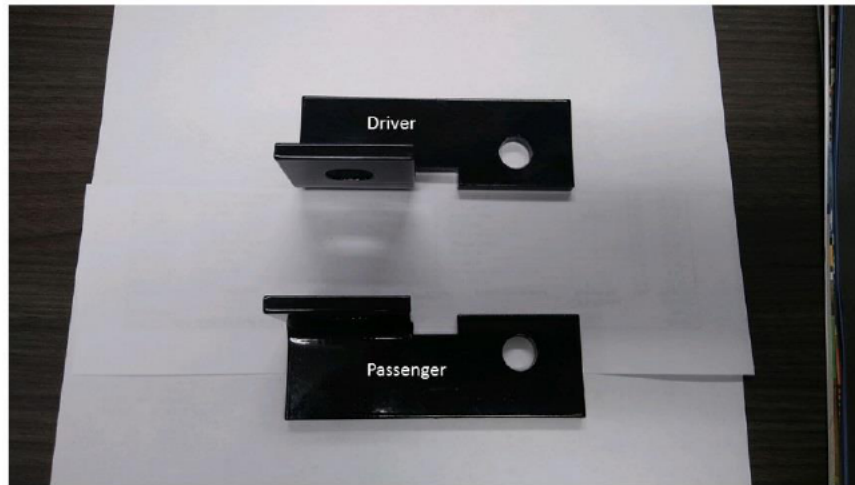
Rev. 2022



1.877.287.8634

INSTALLATION INSTRUCTIONS

IMPORTANT NOTICE: Be sure to inspect and test fit product before having it coated or painted. Ranch Hand will not be responsible for the cost of the coating if any problems with fit or finish are not noted and addressed beforehand.



8. Mount the support bracket to the bottom hole of the bumper bracket. Mount the other side to the mounting bracket. Use ½” hardware to install. *See photo*



Driver Side

9. Mount the grill guard to the mounting bracket. Use ½” carriage bolts to install. Leave loose.
10. Check to see if grill guard is centered side to side. If not, you can move the mounting brackets a little until centered. Once centered, tighten mounting bracket bolts.
11. Tilt the grill guard back or forward to line up the loops to the headlights. Once lined up tighten carriage bolts.

MAKE SURE ALL NUTS AND BOLTS ARE TIGHT!

----- **WARNING** -----

Special care should be exercised in the handling, storage and installation of Ranch Hand equipment.

The actual weight of each piece of equipment will vary depending on style and model. The weight of the equipment is sufficient in volume to warrant special care, assistance and in some instances, the use of mechanical equipment during the transfer and installation of the equipment.

Do not assume a position directly under the equipment during installation. Be sure the equipment has been connected and stabilized during installation to prevent falling or shifting of positions.

Periodically check tightness of bolts to make sure they are tight, and unlikely to fail.

Rev. 2022