



1.877.287.8634

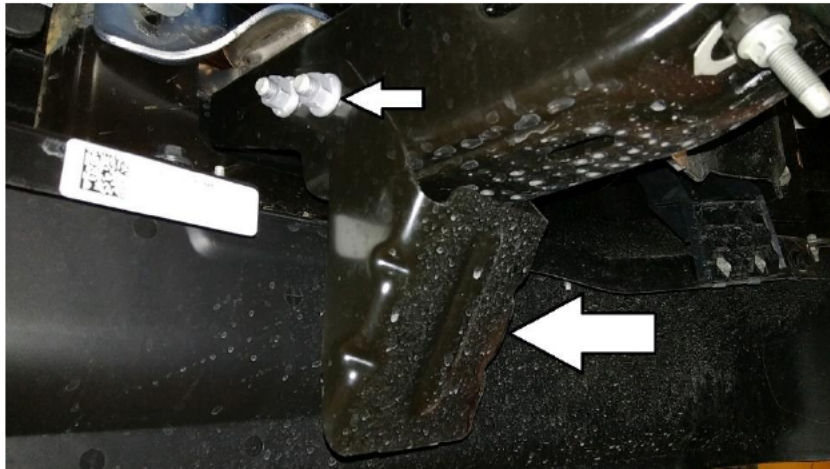
### **INSTALLATION INSTRUCTIONS**

**IMPORTANT NOTICE:** Be sure to inspect and test fit product before having it coated or painted. Ranch Hand will not be responsible for the cost of the coating if any problems with fit or finish are not noted and addressed beforehand.

## **2017-up FORD SUPER DUTY GRILL GUARDS PART # GGF201BL1 / GGF201BL1C / PBF201BL1**

*\*NOTE: You will need to cut openings in the air dam for the straps. Also, on 2020-up models you will need to cut openings for the grille guard to be mounted.*

1. If there are brackets mounted on the bottom of the frame remove the bracket by removing both the 18mm nuts and bolts.



2. From the back side, find the center of the air dam. Measure out 19 11/16" and 21 11/16" on each side and mark. Measure 1" and 2" from the top and mark. The openings should be approximately 1" tall x 2" wide.



3. 2017-2019 models remove the two-outside factory 18mm bumper bolts from each side.
4. 2020-up models remove the plastic insert that is around the tow hooks. Remove the two-outside factory 18mm bumper bolts from each side.

### **----- WARNING -----**

Special care should be exercised in the handling, storage and installation of Ranch Hand equipment.

The actual weight of each piece of equipment will vary depending on style and model. The weight of the equipment is sufficient in volume to warrant special care, assistance and in some instances, the use of mechanical equipment during the transfer and installation of the equipment. Do not assume a position directly under the equipment during installation. Be sure the equipment has been connected and stabilized during installation to prevent falling or shifting of positions.

Periodically check tightness of bolts to make sure they are tight, and unlikely to fail.

Rev. 2021



1.877.287.8634

### **INSTALLATION INSTRUCTIONS**

**IMPORTANT NOTICE:** Be sure to inspect and test fit product before having it coated or painted. Ranch Hand will not be responsible for the cost of the coating if any problems with fit or finish are not noted and addressed beforehand.



5. Install the bottom mounting brackets. Line the top hole of the bracket over the top hole of the bumper. Reuse some of the bolts and nuts from step #1. (Photo of driver side)



6. 2017-19 models: Before installing the grille guard, put a  $\frac{1}{2}$ " x  $2 \frac{1}{4}$ " bolt and  $\frac{1}{2}$ " washer through each hole of the grille guard mounting bracket. Then put another washer on the back side of the mounting bracket over the bolt. The washers will be used as spacers. Then mount the grille guard to the bumper.
7. 2020-up models: Cut a slot into the plastic bumper cover. Measure from the outer edge of the plastic insert a line at  $2 \frac{1}{8}$ " and  $2 \frac{7}{8}$ ". Using a utility knife or cutoff wheel cut a slot for the uprights to slide in between.

### ----- WARNING -----

Special care should be exercised in the handling, storage and installation of Ranch Hand equipment.

The actual weight of each piece of equipment will vary depending on style and model. The weight of the equipment is sufficient in volume to warrant special care, assistance and in some instances, the use of mechanical equipment during the transfer and installation of the equipment. Do not assume a position directly under the equipment during installation. Be sure the equipment has been connected and stabilized during installation to prevent falling or shifting of positions.

Periodically check tightness of bolts to make sure they are tight, and unlikely to fail.

Rev. 2021



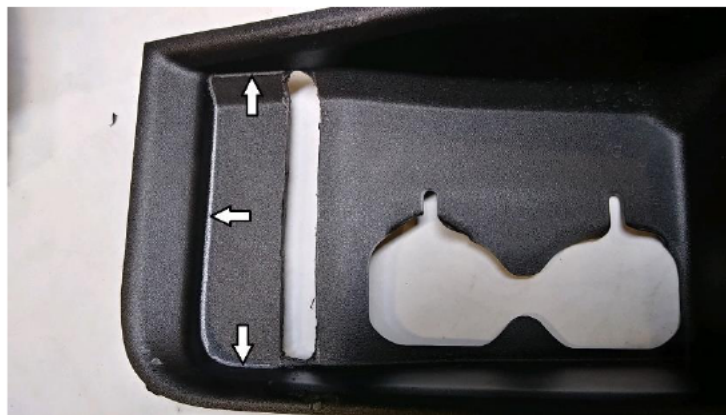
1.877.287.8634

### **INSTALLATION INSTRUCTIONS**

**IMPORTANT NOTICE:** Be sure to inspect and test fit product before having it coated or painted. Ranch Hand will not be responsible for the cost of the coating if any problems with fit or finish are not noted and addressed beforehand.



*Note: It can be cut out more, but bolts will be exposed if done.*



8. 2020-up models: Slide the plastic insert over the legs of the grille guard. Set grille guard in place then use 2 ¼" bolts to install.
9. Center the grille guard from side to side and make sure grille guard is level. Tighten the four ½" bolts. On 2020 models clip plastic insert into bumper.



### ----- WARNING -----

Special care should be exercised in the handling, storage and installation of Ranch Hand equipment.

The actual weight of each piece of equipment will vary depending on style and model. The weight of the equipment is sufficient in volume to warrant special care, assistance and in some instances, the use of mechanical equipment during the transfer and installation of the equipment. Do not assume a position directly under the equipment during installation. Be sure the equipment has been connected and stabilized during installation to prevent falling or shifting of positions.

Periodically check tightness of bolts to make sure they are tight, and unlikely to fail.

Rev. 2021



1.877.287.8634

## **INSTALLATION INSTRUCTIONS**

**IMPORTANT NOTICE:** Be sure to inspect and test fit product before having it coated or painted. Ranch Hand will not be responsible for the cost of the coating if any problems with fit or finish are not noted and addressed beforehand.

10. Make sure the holes of the bottom bracket are in line with the strap holes. You may have to bend the strap to make it fit.
11. Use ½” bolts to mount the straps of the grille guard to the bottom brackets.
12. *MAKE SURE ALL NUTS AND BOLTS ARE TIGHT!*

### ----- **WARNING** -----

Special care should be exercised in the handling, storage and installation of Ranch Hand equipment.

The actual weight of each piece of equipment will vary depending on style and model. The weight of the equipment is sufficient in volume to warrant special care, assistance and in some instances, the use of mechanical equipment during the transfer and installation of the equipment. Do not assume a position directly under the equipment during installation. Be sure the equipment has been connected and stabilized during installation to prevent falling or shifting of positions.

Periodically check tightness of bolts to make sure they are tight, and unlikely to fail.

Rev. 2021