

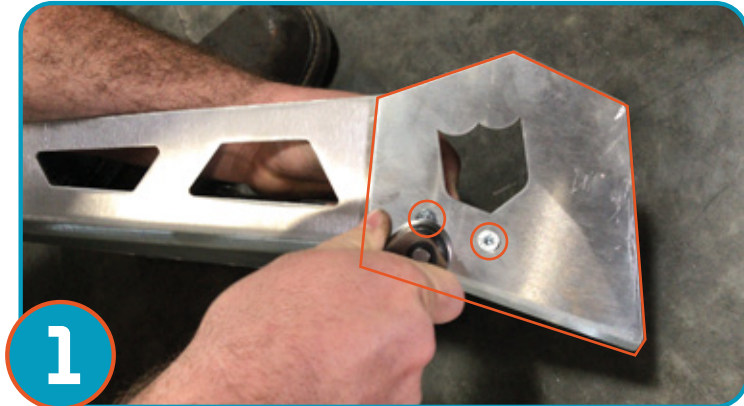


CONTENTS:

- 1- FRONT A-ARM GUARDS (2)
- 2- M6 X 1.00 X 16MM BOLTS (14)
- 3- MOUNTING BRACKETS (6)
- 4- BOOT GUARDS (2)

PRO XP A-ARM GUARDS INSTRUCTIONS (P199P365)

*****NOTE:** Prior to installation, please verify if a revised version of this instruction sheet is available on proarmor.com.***



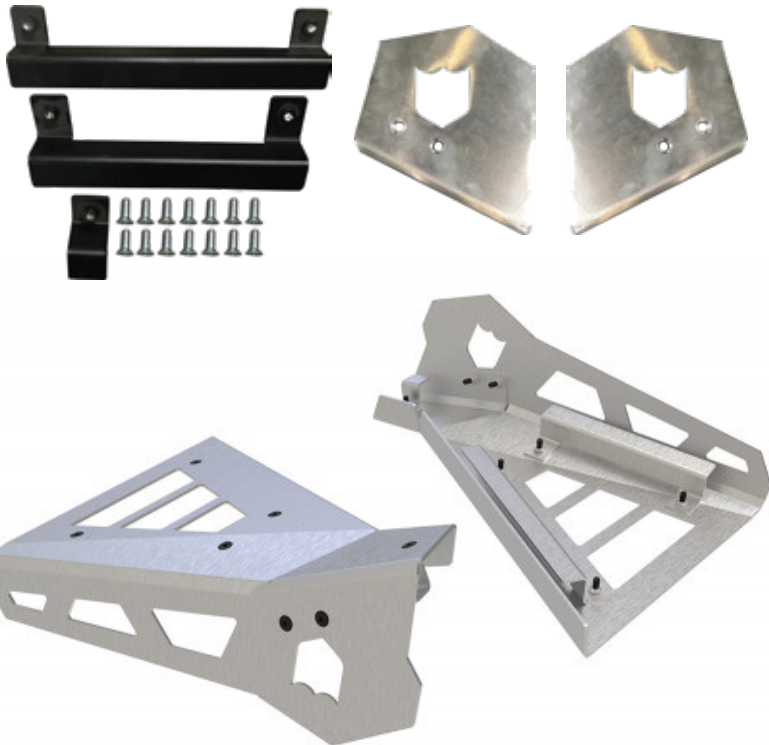
1

Using two (2) 16mm Flat head bolts per guard, secure the boot Guard plates to the Arm Guards as shown. Repeat for opposite A-Arm Guard.



2

Position the long mounting bracket, over the rear A-Arm and secure to A-arm Guard, using two (2) 16mm bolts, as shown.

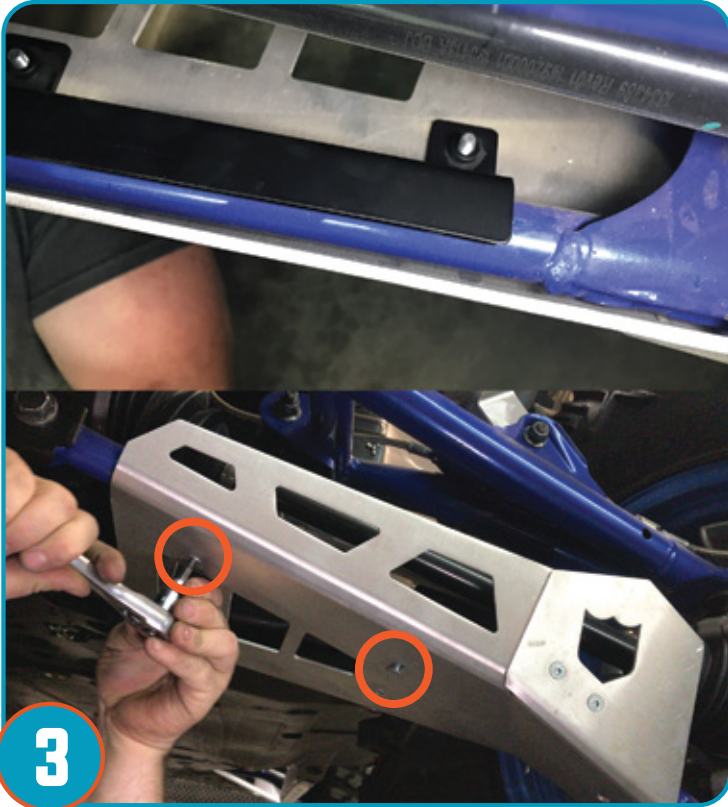


- **Never** stick hands, head or arms outside of vehicle at any time when it is in motion.
- **Always** wear and use proper safety equipment when using any Pro Armor product.
- Improper use of directions and/or product can result in injury to yourself or damage to your vehicle.
- **Disclaimer please read:** This product is sold without warranty expressed or implied. No warranty or representation is made as to the products ability to protect the user / occupant from any injury or death in any manner of use. The user assumes that risk. The effectiveness of this equipment is directly related to the manner in which it is installed, used, and / or maintained.
- **Proper installation is solely the responsibility of the installer, and will not be assumed by Pro Armor.**
- If you have questions about your installation or are unable able to complete installation, contact Pro Armor Customer Service (888)312-7667 or have an authorized dealer or trained technician, inspect your installation.

⚠ WARNING



PRO XP A-ARM GUARDS INSTRUCTIONS (P199P365)



Position the short mounting bracket, over the front A-Arm and secure to A-arm Guard, using two (2) 16mm bolts, as shown.



Position the small mounting bracket, over the front A-Arm and secure to A-arm Guard, using one (1) 16mm bolts, as shown.
REPEAT STEPS FOR OPPOSITE A-ARM GUARD.

