

## 2021+ F150 MRT Deep & Mellow Cat Back

Part No. 91K105

### Materials Included

- Qty (1) – Lead pipe
- Qty (1) – 18" Extension pipe
- Qty (1) – Muffler
- Qty (1) – Over-Axle Pipe
- Qty (1) – Dual Tip
- Qty (4) – 3 inch clamps
  
- Qty (2) – Flange Bolts (3/8" x 3")
- Qty (2) – 3/8 Nuts
- Qty (4) – 3/8 Washers

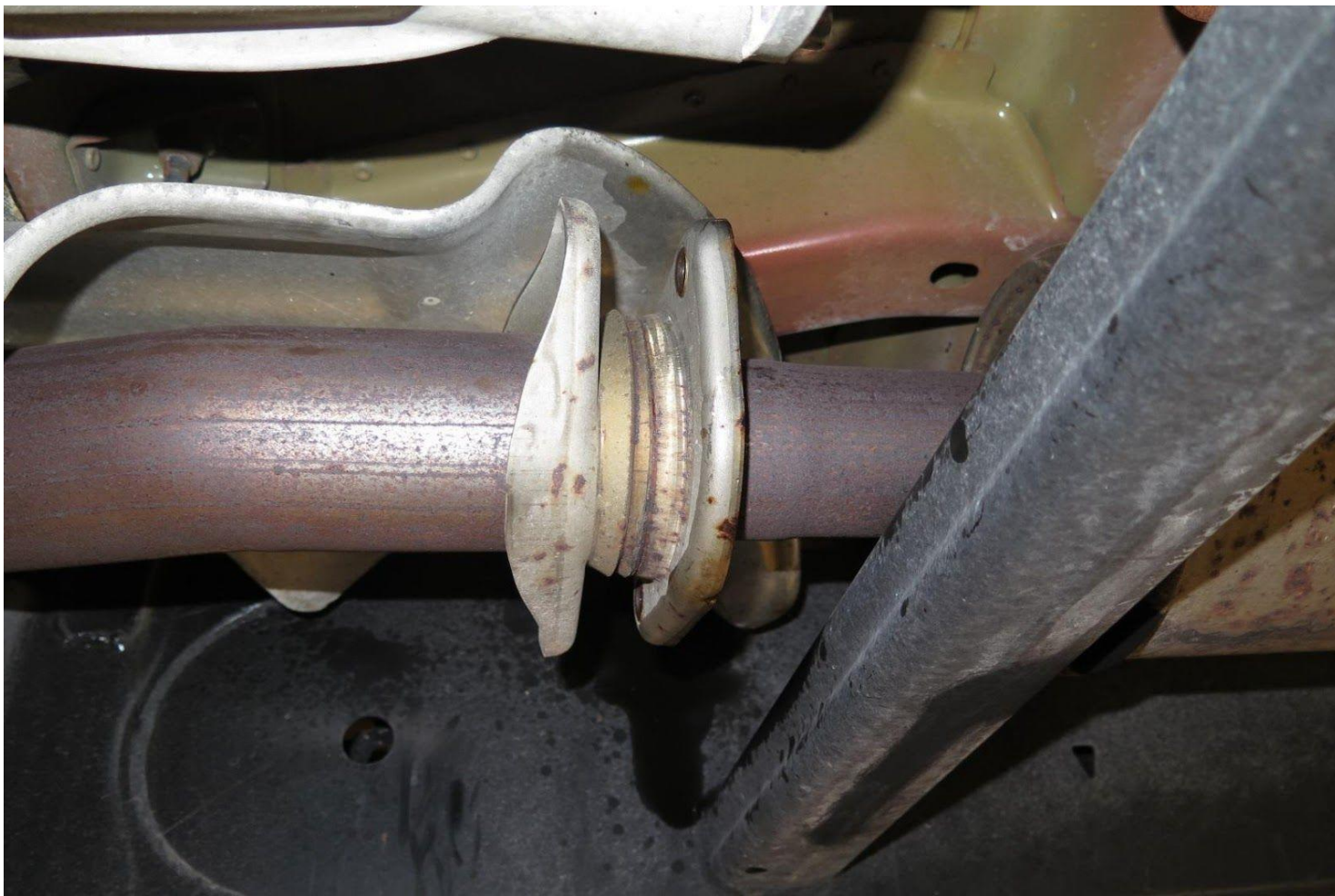
### Required Tools

- 15mm Socket
- 13mm Socket
- 10mm socket

Figure 1.



Step 1 – Unclamp at (figure 1) **Figure 2.**

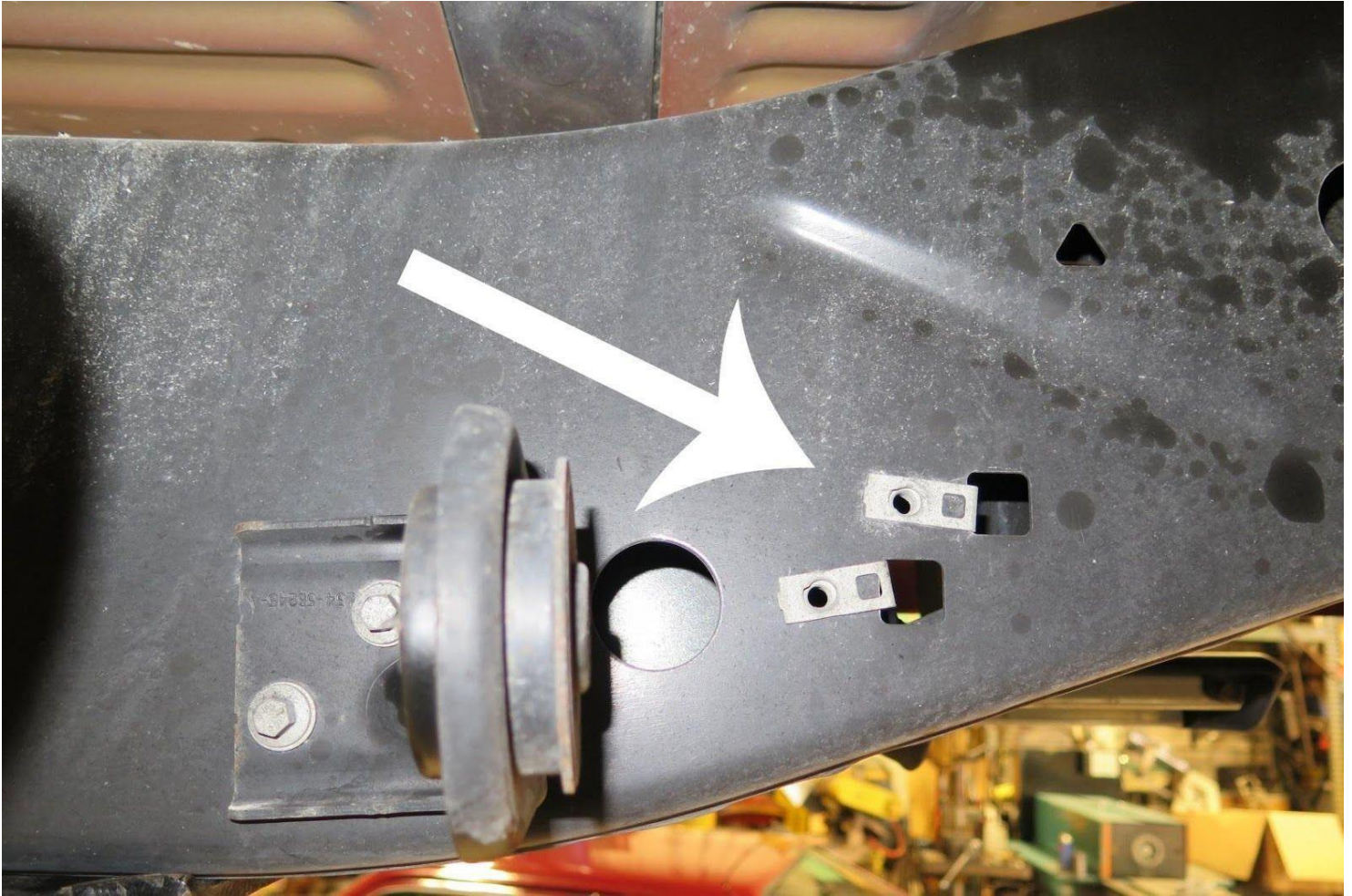


Step 2 – Unbolt flange at figure 2

Step 3 – Remove Factory Exhaust

Figure 3.





**Step 4 – Move hanger bracket shown in figure 3**

- Hanger bracket needs to be in the location shown by the arrow.

**Figure 4.**





**Step 5 – Bolt our Lead pipe up to flange as shown in figure 4 (leave all clamps loose until exhaust is full assembled)**



## Step 6 – Use extension pipe if needed

126" WB - Regular Cab/ 6.5' Bed - Trim 18" off of inlet pipe

133" WB - SuperCab/ 5.5' Bed - Trim 12" off of inlet pipe

145" WB - SuperCrew/ 5.5' Bed - Use inlet pipe with no modifications 145" WB - Regular Cab/ 8' Bed - Use inlet pipe with no modifications 145" WB - SuperCab / 6.5' Bed - Use inlet pipe with no modifications

157" WB - SuperCrew / 6.5' Bed - Trim 6" off of extension pipe and use with inlet pipe 163"

WB - SuperCab / 8' Bed - Use inlet pipe and extension pipe with no modifications.

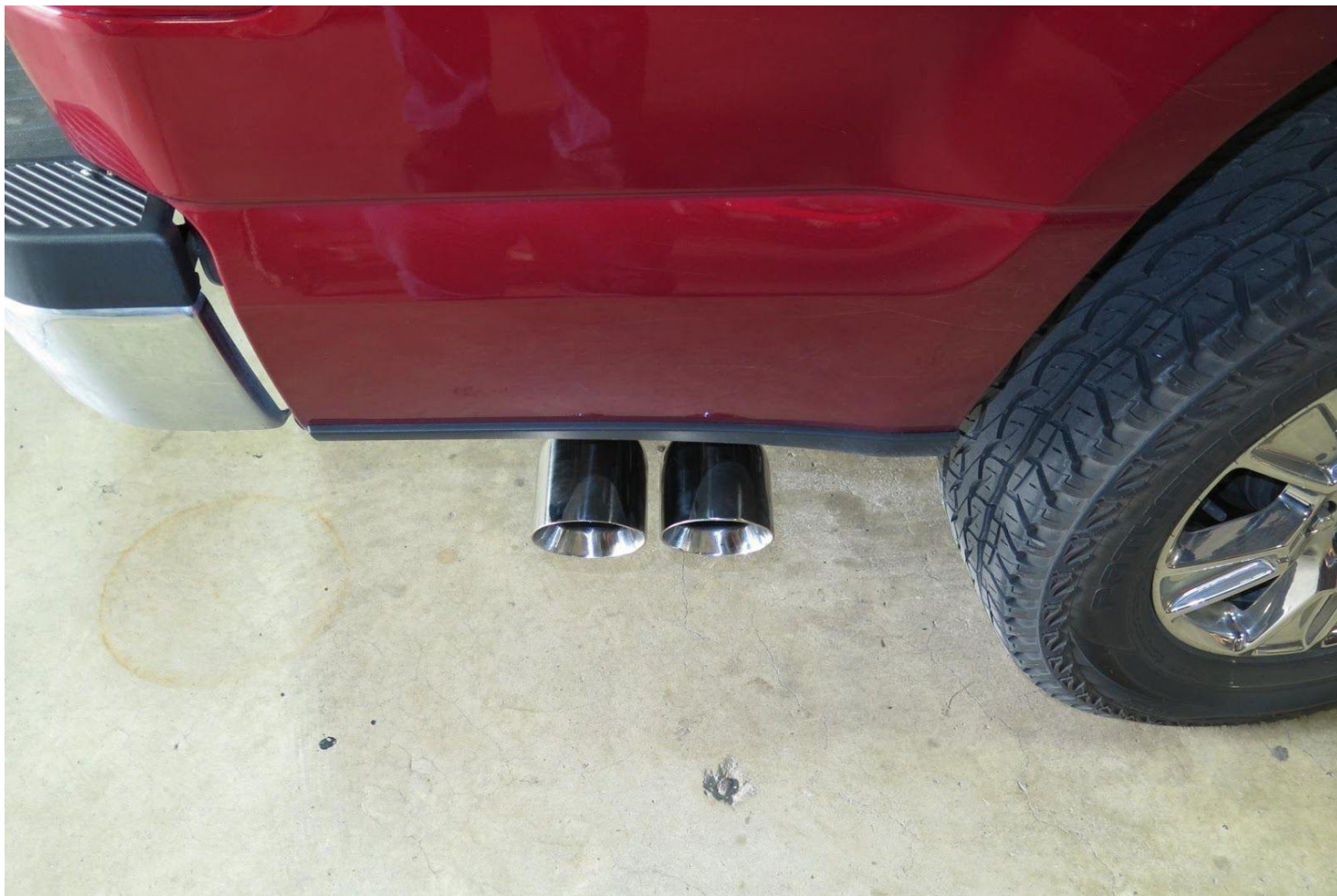
## Step 7 -- Clamp Muffler to lead/extension pipe



Step 8 – Clamp over axle pipe to muffler







Step 9 -- Clamp on tip ^

### Warranty Information

**IMPORTANT** – The warranty on this product is VOID if the product is not properly installed, or has been modified or altered in any way. If you believe that modification will be required to fit an MRT Exhaust System on your vehicle, **please contact** MRT for assistance **BEFORE** making any modifications to the system.

MRT appreciates your business; please feel free to contact us at any point with questions or concerns at 734-455-5807 or via email at [Sales@MRT-Direct.com](mailto:Sales@MRT-Direct.com)