



# PARTICLE SEPARATOR X2

[www.kwtfilters.com](http://www.kwtfilters.com)

**P/N: 20-7000**

Approx. Install Time: 0 Hrs 60 Min

## INSTALLATION INSTRUCTIONS

### VEHICLE TYPE

Year: **2020**  
Make: **CFMOTO**  
Model: **Zforce**  
Engine: **950**

### TOOLS REQUIRED

- 3/16" Hex Key (Allen Wrench)
- 1/8" Hex Key (Allen Wrench)
- Phillips Screwdriver
- Wire Cutters
- 4" Diameter Hole Saw and Drill

## BEFORE YOU START

Please read the entire installation manual before proceeding.  
Ensure all part items listed on page 4 exist  
If you are missing any of the components, call our customer support at 888-340-5055.  
Do not work on the vehicle while the engine is running or hot.  
Ensure vehicle is turned off and brake is on.

### WARNING:

**THIS EQUIPMENT SHOULD BE INSTALLED, ADJUSTED, AND SERVICED BY PERSONNEL FAMILIAR WITH THE CONSTRUCTION AND OPERATION OF THIS TYPE OF EQUIPMENT AND THE HAZARDS INVOLVED. FAILURE TO OBSERVE THIS PRECAUTION COULD RESULT IN SEVERE INJURY. READ THIS MANUAL THOROUGHLY AND MAKE SURE YOU UNDERSTAND THE PROCEDURES BEFORE YOU ATTEMPT TO OPERATE THIS EQUIPMENT. THE PURPOSE OF THIS MANUAL IS TO PROVIDE YOU WITH INFORMATION NECESSARY TO SAFELY OPERATE, MAINTAIN, AND TROUBLESHOOT THIS EQUIPMENT. DO NOT USE THIS EQUIPMENT FOR ANY REASON OTHER THAN ITS INTENDED PURPOSE. FAILURE TO FOLLOW THESE INSTRUCTIONS WILL VOID ANY WARRANTY. KEEP THIS MANUAL FOR FUTURE REFERENCE. THE INFORMATION CONTAINED IN THIS MANUAL IS SUBJECT TO CHANGE WITHOUT NOTICE.**



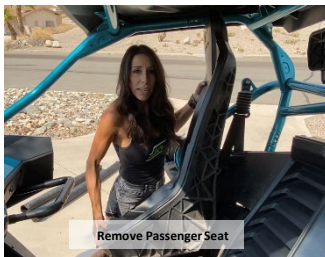
# PARTICLE SEPARATOR X2 P/N: 20-7000

## INSTALLATION INSTRUCTIONS

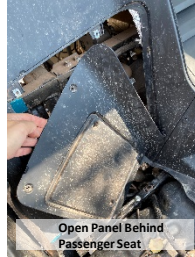
SEE EXPLODED VIEW ON PAGE 4 FOR ASSOCIATED ITEM PART NUMBERS

**STEP 1.** The preferred placement for the Particle Separator (1) is centered and mounted on the top bar of the roll cage. Ensure you have enough room to fit the clamps and particle separator on the roll cage without any interference of the air intake on the bottom and front of the filter. Roll bar clamps (7) are adaptable enough to work around any additional accessories you may have on the roll cage in.

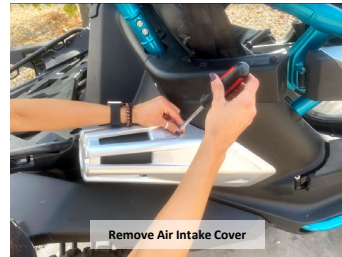
Prior to installing the Particle Separator (1), remove the passenger seat, panel cover behind the passenger seat and stock air intake tube on the passenger side of the vehicle. Disconnect the air intake tube from the stock air filter box and from the side of the vehicle. Once both bolts are removed, pull out the air intake tube.



Remove Passenger Seat



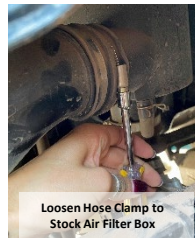
Open Panel Behind Passenger Seat



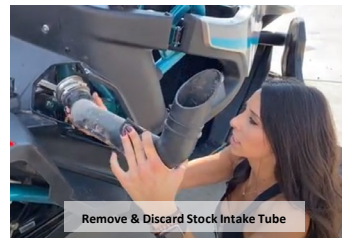
Remove Air Intake Cover



Remove Outside Tube Bolt



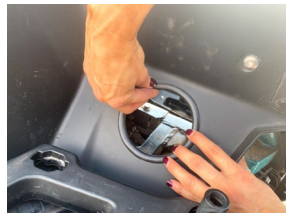
Loosen Hose Clamp to Stock Air Filter Box



Remove & Discard Stock Intake Tube

**STEP 2.** Measure the center of the panel adjacent to the stock air filter compartment. Cut a hole using a 4" diameter hole saw. Insert included rubber stripping around the hole. Insert Flexible Hose Duct (9) from the air intake area through the panel hole.

Connect the Duct Adapter (9) around the vehicle's stock air intake box, place the Hose Clamp (2) over the end of the Flexible Hose Duct (8). Insert Flexible Hose Duct (8) over the Duct Adapter (9) and tighten the Hose Clamp (2).





# PARTICLE SEPARATOR X2 P/N: 20-7000 INSTALLATION INSTRUCTIONS (CONTINUED)

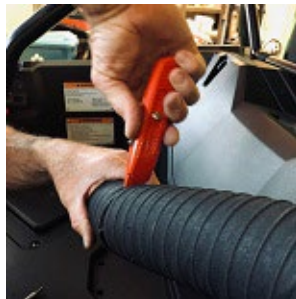
**STEP 3.** Use 1/8" allen wrench to unscrew bolts from Roll Bar Clamps (7). Install Clamps onto the top roll bar. Do not fully tighten, clamps should be able to rotate slightly and will be fully tightened later in assembly. Place Metal Brackets (5) onto the on the Roll Bar Clamps (7) and tighten with an allen wrench. After Roll Bar Clamps (7) and Metal Bracket (5) are installed, measure the gap between the Clamps (7) and set the distance at 8 ¼ inches. Tighten the Roll Bar Clamps (7) and Metal Brackets (5).



**STEP 4.** Install Particle Separator (1) onto the Metal Brackets (5) on the left and right-side using Bolt (6) and Washer (4) and a 3/16" allen wrench to tighten. The washer **MUST** be between the Metal Bracket (5) and Particle Separator (1). If the washer is placed under the head of the Bolt (6) the Particle Separator will rotate freely and may cause damage.



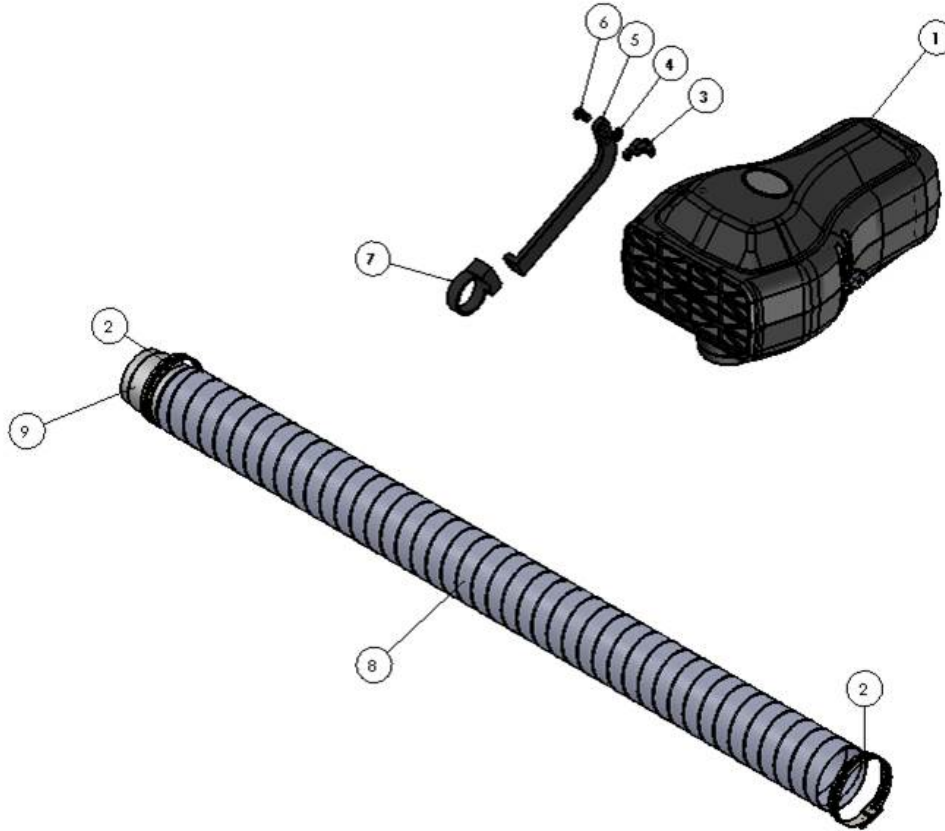
**STEP 5.** Measure Flexible Duct Hose (8) to Particle Separator (1) inlet, if necessary, cut excess off the Flexible Duct Hose (8) with wire cutters for a better fit. Insert the Hose Clamp (2) over the end of the Flexible Duct Hose (8) that is sticking out of the air intake panel. Place the Flexible Duct Hose (8) over the Particle Separator (1) intake and tighten Hose Clamp (2). Once completed, replace air intake side cover, panel behind the passenger seat and the passenger seat back onto the vehicle.





# PARTICLE SEPARATOR X2 P/N: 20-7000 INSTALLATION INSTRUCTIONS (CONTINUED)

## EXPLODED VIEW / PARTS LIST



ITEM	QTY	DESCRIPTION	PART NUMBER
1	1	PARTICLE SEPARATOR	KW9728-01
2	2	HOSE CLAMP	KW9728-02
3	2	MOUNTING BRACKET	KW9728-03
4	2	WASHER, 5/16 NORD-LOCK	KW9728-04
5	2	BRACKET, METAL	KW9728-05

ITEM	QTY	DESCRIPTION	PART NUMBER
6	2	BOLT 5/16-18 x 5/8	KW9728-06
7	2	CLAMP, ROLL BAR	KW9728-07
8	1	FLEXIBLE DUCTHOSE, 3.25" DIA	KW9728-09
9	1	DUCT ADAPTER	KW9728-08

### SIDE NOTE

KWT recommends that you apply a layer of waterproof grease, such as made by Bel-Ray or Super Lube, on the inside flange of the stock air filter to keep dust from bypassing the seal.



# PARTICLE SEPARATOR X2 P/N: 20-7000 INSTALLATION INSTRUCTIONS (CONTINUED)

## ONGOING MAINTENANCE

Your Particle Separator requires very little if any maintenance depending on where you drive; however, you should check to make sure the opening on front of the Particle Separator is not blocked by mud or other debris each time you exit the UTV. To clean your Particle Separator, review the cleaning instructions below. Cleaning should take place if the clear Sight Glass located on the underside of the Separator is showing dirt over the entire clear portion of the Sight Glass.

## CLEANING INSTRUCTIONS

To clean the KWT Particle Separator push in the three buttons located on the bottom to release the dirt collection tray. Empty the dirt by taping it out. Install the tray in place starting from the back. Ensure each button is pushed in fully before replacing the tray back on the filter. Squeeze the dirt collection chamber onto the filter until hearing an audible “click”. Repeat for the two front buttons. To ensure the dirt collection tray is securely fastened, gently pull down on each of the three corners to make sure no gaps are visible.

