



Dodge Durango

2021+ Hellcat 6.2L

2018+ SRT 392 6.4L



IMPORTANT! WARRANTY AND INSTALLATION INSTRUCTIONS

Please Forward All Information to Consumer

Be sure to review the enclosed instructions prior to beginning the installation process. If you have any questions about the enclosed parts or instructions, or if you encounter a problem during installation:

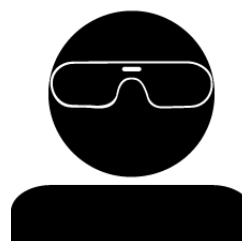
CALL TECHNICAL SUPPORT: 440.891.0999 or 800.486.0999

**TO ACTIVATE YOUR WARRANTY GO TO:
[CORSAPERFORMANCE.COM/WARRANTY](https://corsaperformance.com/warranty)**

COLOR INSTRUCTIONS ARE AVAILABLE BY PART NUMBER ON: [CORSAPERFORMANCE.COM](https://corsaperformance.com)



NEVER work on a hot exhaust system.
Allow time for the vehicle to cool.



**Always wear eye protection
when working under a vehicle.**

INSTALL DIFFICULTY

RECOMMENDED TOOLS & SUPPLIES

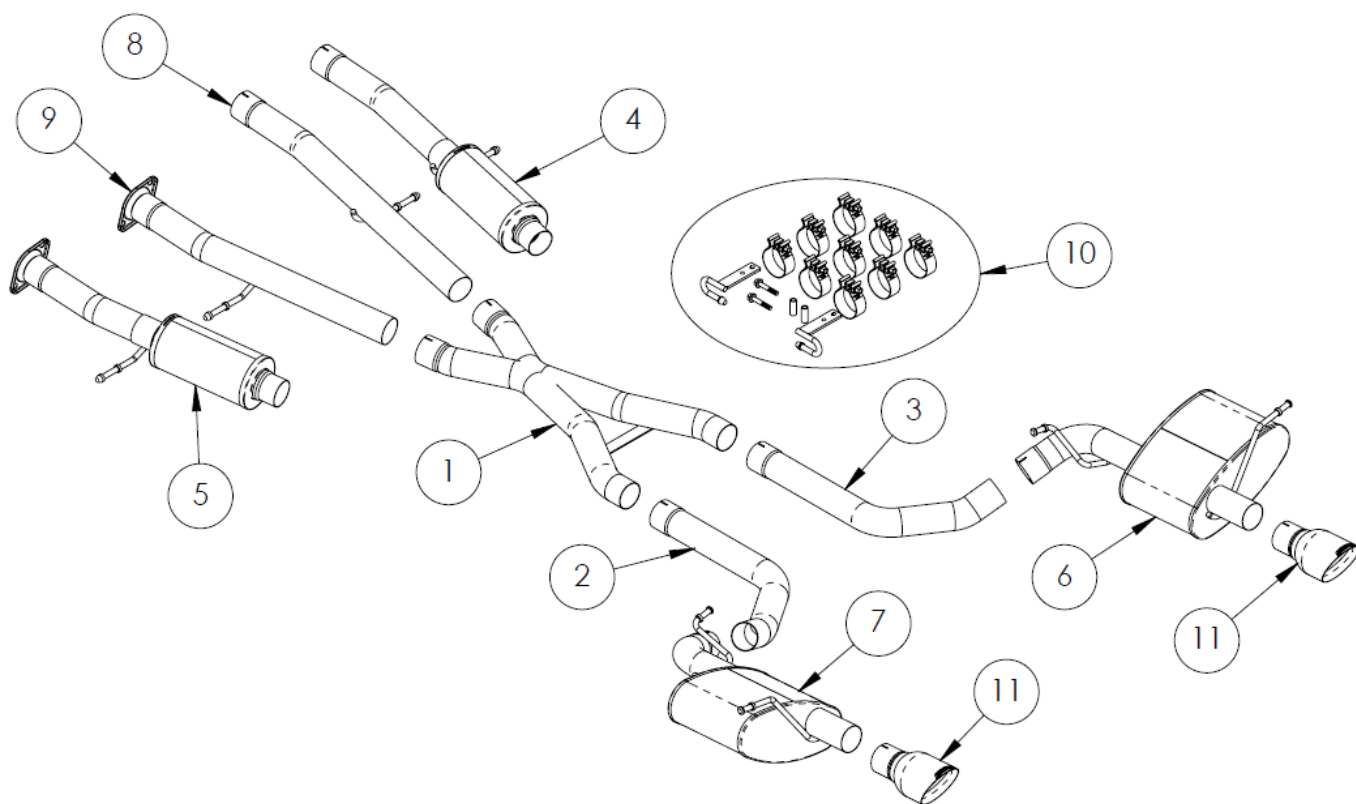
- 3/8" Drive Ratchet
- 3/8" Drive 15mm Deep Socket
- Torque Wrench
- 13mm Wrench
- Safety Glasses
- 3/8" Drive 13mm Deep Socket
- Grommet Pullers
- Penetrating Lubricant Spray
- Soapy Water Solution

PLEASE READ THESE INSTRUCTIONS BEFORE INSTALLATION.

CORSA recommends that the installation of this system be performed by a qualified service center or professional installer who has the necessary equipment, tools, and experienced personnel. However, if you decide to perform this installation yourself, the use of an additional person may be required.

WARNING: Never work on a hot exhaust system. Allow time for the vehicle to cool. Always wear eye protection when working under a vehicle.

This warranty does not extend to damaged or defect in the finish of a product or to any product, that in the opinion of CORSA Performance, has been misused, damaged by accident or negligence, altered or modified in any way, faulty installation, or installed contrary to CORSA installation instructions, or repaired by an unauthorized service facility. Full warranty available on www.corsaperformance.com



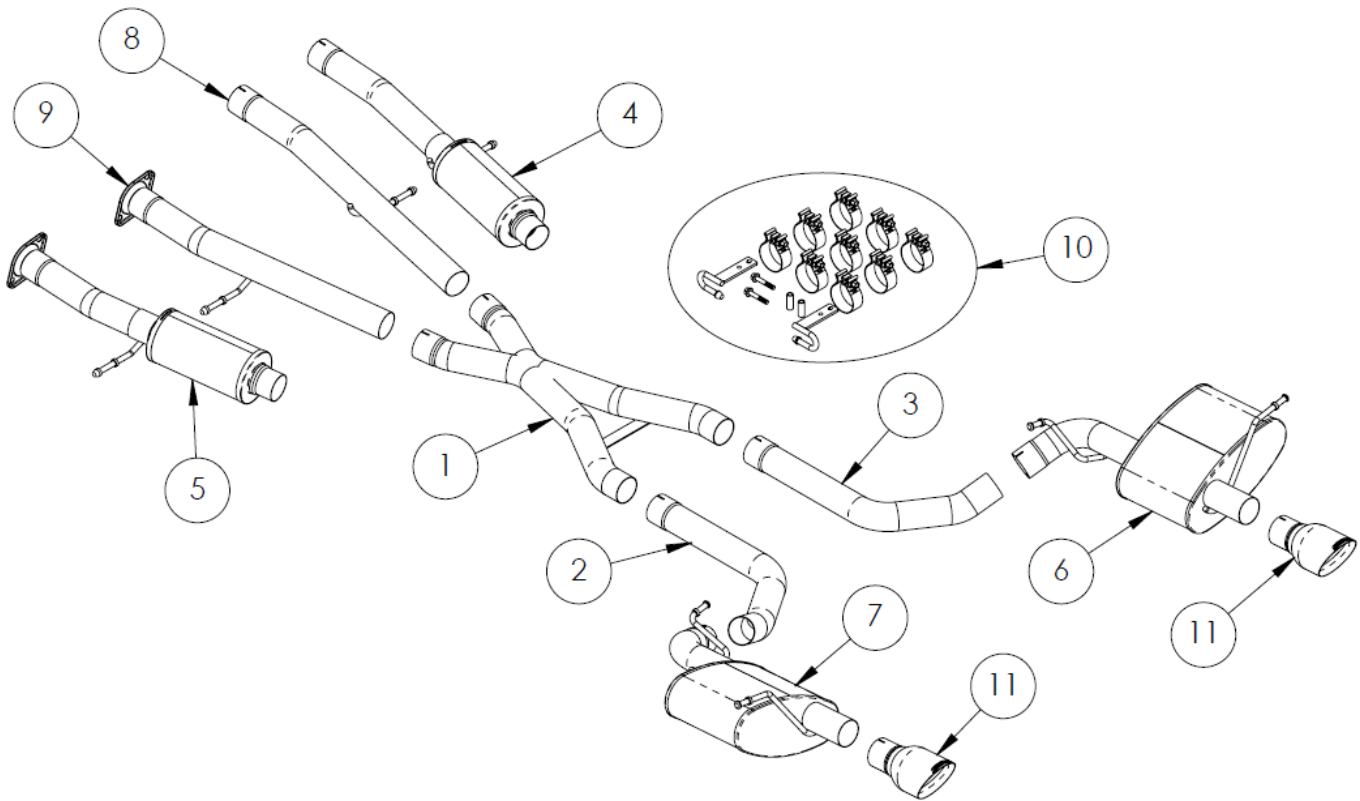
**DODGE DURANGO HELLCAT CAT BACK EXHAUST
BILL OF MATERIALS – 21195 & 21196**

1.	Crossover Assembly (17GC4005)	2.	Driver Side Axle Pipe (17GC4051)
3.	Pass. Side Axle Pipe (17GC4052)	4.	(21195 Only) Pass. Side Sport Tunnel Muffler (18DD2014)
5.	(21195 Only) Driver Side Sport Tunnel Muffler (18DD2015)	6.	Pass. Side Hellcat Rear Muffler (18DD2016)
7.	Driver Side Hellcat Rear Muffler (18DD2017)	8.	(21196 Only) Pass. Side Xtreme Head Pipe (18DD4030)
9.	(21196 Only) Driver Side Xtreme Head Pipe (18DD4031)	10.	Hardware Kit (18DD7014)
11.	4.5" Slash Cut Tip Assembly (Qty. of 2) (99TK3010)		

CAUTION: Never work on a hot exhaust system. Allow the vehicle to cool for at least an hour and a half. Always wear eye protection when working under a vehicle. It is recommended to use cotton gloves in order to protect stainless steel surfaces from permanent grease and oil stains.

Please confirm that all parts are present according to the bill of materials before beginning the installation.

If something is missing call Tech Support at 440.891.099 or Toll Free: 1.800.486.0999



DODGE DURANGO 392 CAT BACK EXHAUST BILL OF MATERIALS –21197 & 21198

1.	Crossover Assembly (17GC4005)	2.	Driver Side Axle Pipe (17GC4051)
3.	Pass. Side Axle Pipe (17GC4052)	4.	(21197 Only) Pass. Side Sport Tunnel Muffler (18DD2014)
5.	(21197 Only) Driver Side Sport Tunnel Muffler (18DD2015)	6.	Pass. Side 392 Rear Muffler (18DD2024)
7.	Driver Side 392 Rear Muffler (18DD2025)	8.	(21198 Only) Pass. Side Xtreme Head Pipe (18DD4030)
9.	(21198 Only) Driver Side Xtreme Head Pipe (18DD4031)	10.	Hardware Kit (18DD7014)
11.	4.5" Slash Cut Tip Assembly (Qty. of 2) (99TK3010)		

REMOVAL INSTRUCTIONS

FACTORY EXHAUST



1. Using the ratchet and 15mm socket, loosen the clamp in front of the passenger side flange connection.



2. Using the 13mm wrench, loosen the two nuts at the driver side flange location. Set aside the spring nut assemblies to be reused during **INSTALL STEP 5**.



3. Using a ratchet and a 13mm socket, remove the two bolts from each hanger bracket at the tunnel muffler location. Set aside the four bolts to be reused during **INSTALL STEP 1**. Remove the ground clip from the passenger side front hanger of the rear muffler



4. Using grommet pullers or similar device, remove the front hanger grommets from both rear mufflers. **NOTE:** The use of soapy water solution will aid in the removal and later installation of the hangers in the factory grommets.

Continued on Next Page . . .

REMOVAL INSTRUCTIONS

FACTORY EXHAUST



- 5.** Using the ratchet and 15mm socket, loosen the clamp on the inlet pipe to the driver side rear muffler.



- 6.** Remove the driver side rear muffler inlet from the axle pipe connection.
NOTE: The use of penetrating lubricant spray on the pipe joint may aid in removal.



- 7.** Carefully remove the factory driver side muffler by pulling the rear hanger out of the rubber grommet, then moving the muffler downward to free it from the vehicle.



- 8.** The rest of the factory exhaust system will come out in one piece. Pull the rear hanger on the passenger side rear muffler out of the rubber grommet and then slide the entire exhaust system down and rearwards to remove it from the vehicle.

Continued on Next Page ...

REMOVAL INSTRUCTIONS

FACTORY EXHAUST



9. Locate the factory tunnel muffler, with the factory hanger grommets and brackets still attached.



10. Using grommet pullers or a similar device, remove both rubber grommets and hanger brackets from the factory tunnel muffler.



11. Using grommet pullers or a similar device, remove both rubber grommets from the hanger brackets.



12. Set aside the factory rubber grommets to be reused during **INSTALL STEP 3**.

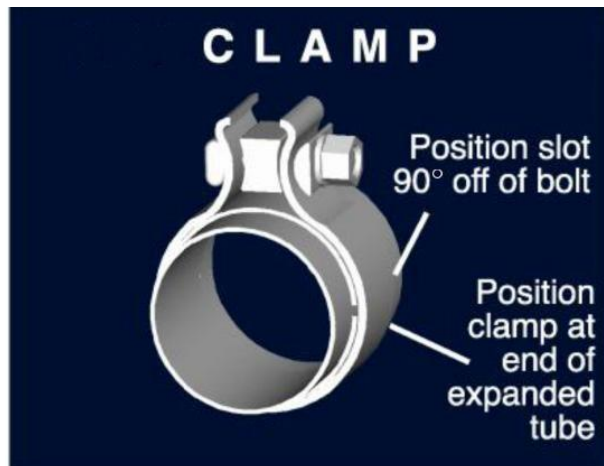
This concludes the removal of the factory exhaust.

WARNING! DO NOT SKIP THIS STEP!

It is recommended to apply the anti-seize lubricant to the threads **ONLY** of the clamps and flange bolts. Failure to follow this procedure can cause nuts to seize on clamps and potentially destroy threads.

After applying anti-seize lubricant, be sure to **thoroughly** clean your hands, as lubricant will tarnish stainless steel.

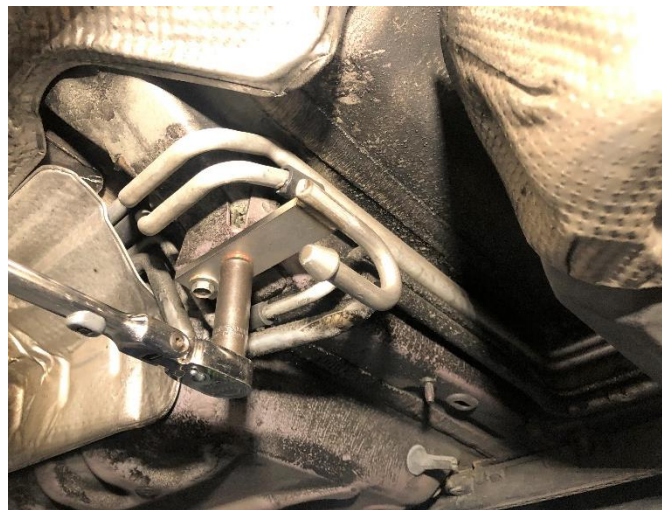
All clamps should be tightened using a properly calibrated Torque Wrench. Using an air impact gun will damage the clamp and reduce its ability to effectively seal the joint. It may also cause the joint to separate, thereby causing damage to your exhaust system and to your vehicle.



NOTE: Align all clamps so that the center of the clamp bolt is 90 degrees from the notch in the pipe.

INSTALLATION INSTRUCTIONS

CORSA EXHAUST

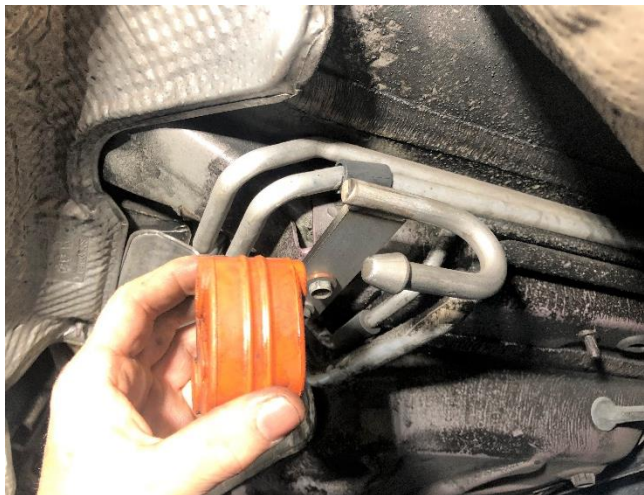


1. Locate the two hanger assemblies provided in the hardware kit, along with the four bolts set aside in **REMOVAL STEP 3**.
2. Using a ratchet and 13mm socket, install the passenger side hanger assembly with two of the retained bolts at the tunnel muffler location.

Continued on Next Page ...

INSTALLATION INSTRUCTIONS

CORSA EXHAUST



- 3.** Locate the two factory rubber grommets set aside during **REMOVAL STEP 12**. Slide one of the rubber grommets onto the hanger.

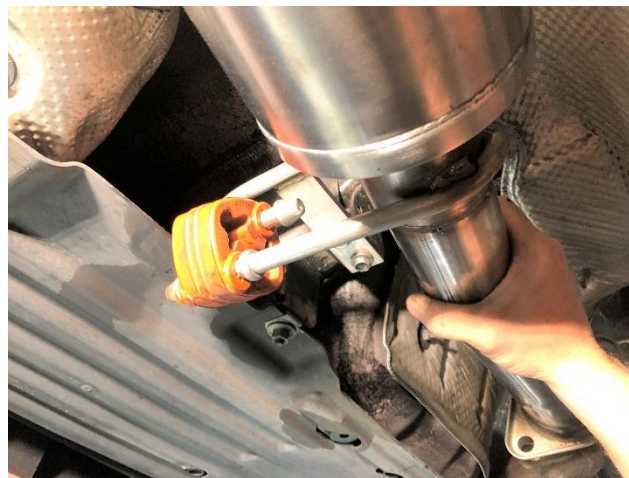
NOTE: Once again, the use of soapy water solution will aid in the installation of the hangers into the factory grommets.



- 4.** Repeat **INSTALL STEPS 2-4** to install the hanger assembly on the driver side of the vehicle.



- 5.** Locate the CORSA driver side tunnel muffler assembly or CORSA tunnel head pipe assembly, the two M10-1.5X60mm bolts and two spacers from the hardware kit, and the two factory springs nut assemblies retained in **REMOVAL STEP 2**.



- 6.** Insert the driver side tunnel muffler/head pipe hanger into the rubber grommet.

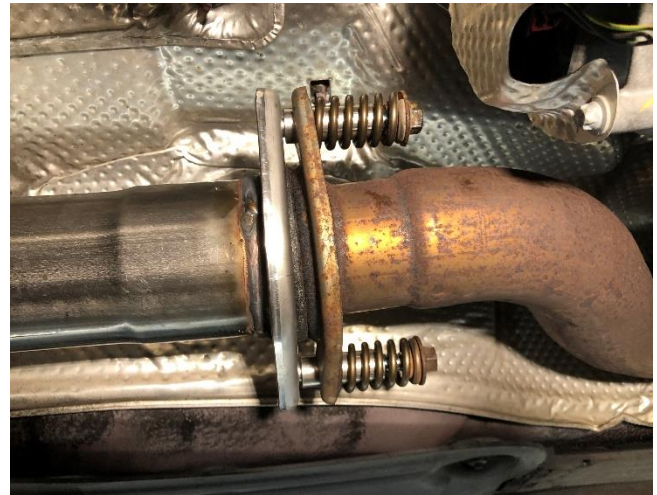
Continued on Next Page . . .

INSTALLATION INSTRUCTIONS

CORSA EXHAUST



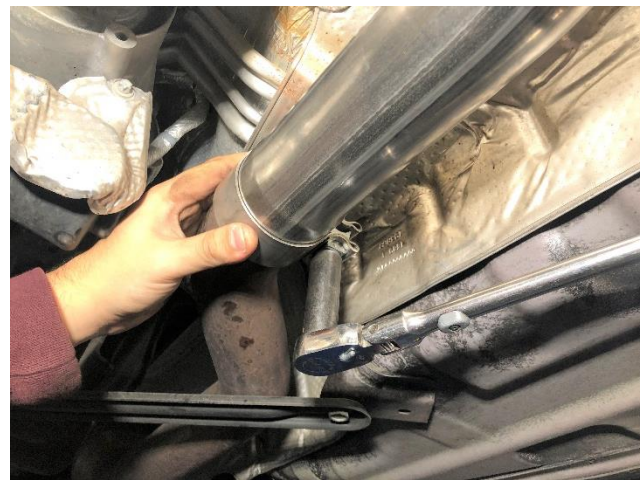
7. Insert the two supplied M10 bolts (facing forward) through the CORSA driver side tunnel muffler/head pipe flange first, then the stock flange. Next, slide the spacers onto the bolts from the front side, making sure they pass through both flanges as shown.



8. Thread both spring nut assemblies onto the bolts by hand. Using a ratchet with a 15mm socket and 13mm wrench, tighten the flange hardware. **NOTE:** Ensure the CORSA tunnel muffler/head pipe hanger is horizontal while tightening the flange hardware. Tighten both sets of fasteners evenly, ensuring that the spacers go through both flanges and are fully seated against the bolt heads. Make sure the bolt heads are against the rear face of the muffler flange.



9. Locate the CORSA passenger side tunnel muffler assembly or CORSA tunnel head pipe assembly and one of the 2.75" clamps. Position the 2.75" clamp onto the pipe inlet and then insert the passenger side tunnel muffler/head pipe hanger into the rubber grommet.

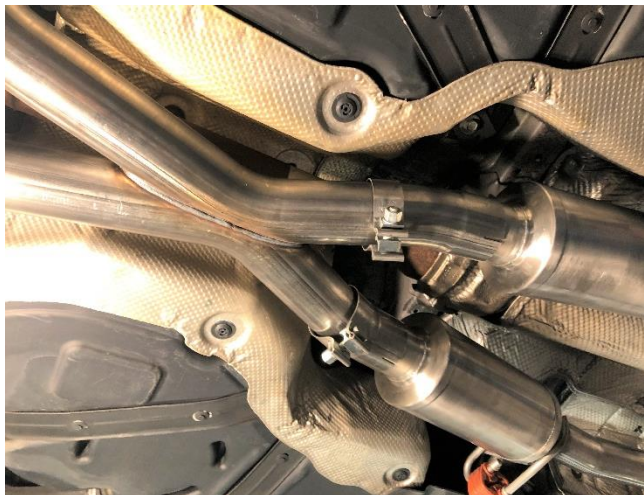


10. Position the CORSA passenger tunnel muffler/head pipe inlet onto the factory cat outlet, making sure to have at least 1.625" of overlap at the slip fit connection. Snug the clamp using a 15mm socket and ratchet, leaving it loose enough for later adjustment. **NOTE:** Ensure the CORSA tunnel muffler/head pipe hanger is horizontal while tightening the clamp.

Continued on Next Page . . .

INSTALLATION INSTRUCTIONS

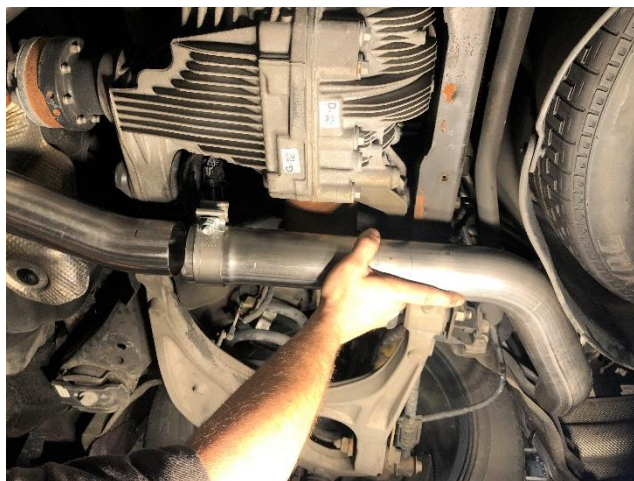
CORSA EXHAUST



- 11.** Locate the CORSA crossover pipe assembly and two 2.75" clamps. The crossover pipe is installed with the reinforcement brace towards the ground and towards the rear of the vehicle. Position the 2.75" clamps onto the inlet of the crossover pipe with the clamp hardware facing to the inside and the clamp nuts facing down. Install the crossover pipe inlets onto both tunnel muffler/head pipe assembly outlet pipes.



- 12.** Make sure to have at least 1.625" of overlap at both slip fit connections. Snug both clamps using a 15mm socket and ratchet, leaving them loose enough for later adjustment.



- 13.** Locate the CORSA passenger axle pipe assembly and a 2.75" clamp. Position the 2.75" clamp onto the axle pipe inlet, and then install the passenger axle pipe inlet onto the passenger side outlet of the crossover assembly.

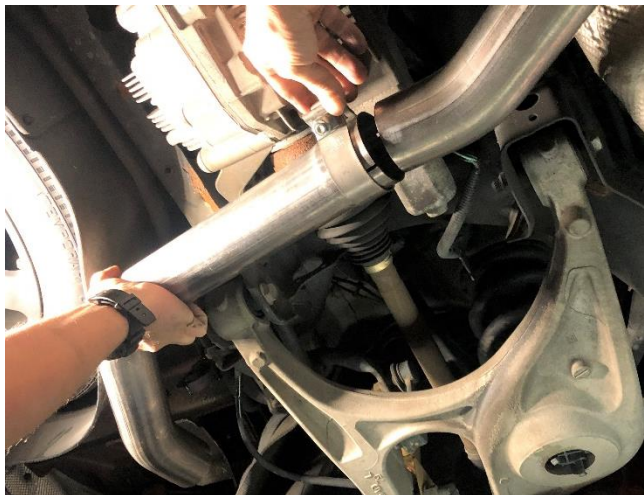


- 14.** Make sure to have at least 1.625" of overlap at the slip fit connection. Snug the clamp using a 15mm socket and ratchet, leaving it loose enough for later adjustment.

Continued on Next Page . . .

INSTALLATION INSTRUCTIONS

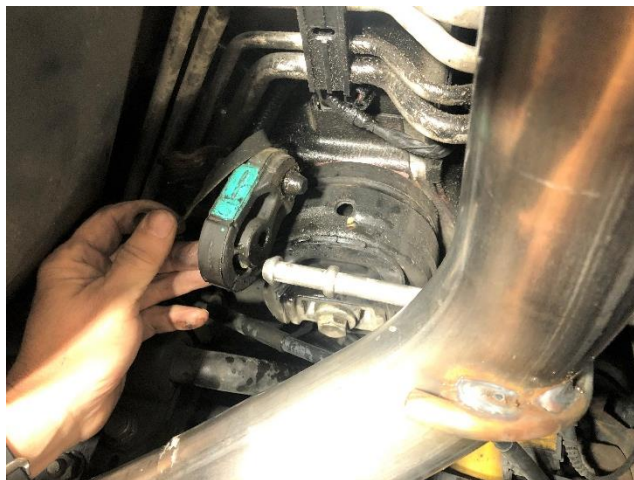
CORSA EXHAUST



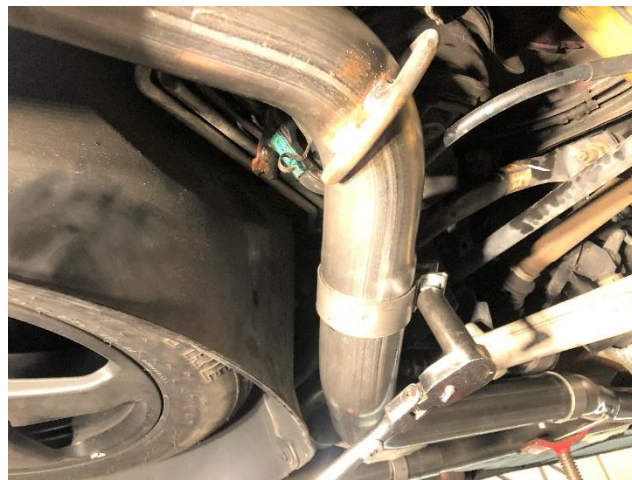
- 15.** Repeat **INSTALL STEPS 13-14** to install the CORSA driver side axle pipe onto the outlet of the driver side crossover assembly.



- 16.** Locate the CORSA passenger side rear muffler assembly and one of the 2.75" clamps. Insert the rearward hanger on the passenger side rear muffler into the rubber grommet.



- 17.** Insert the forward hanger on the passenger side rear muffler into the rubber grommet.



- 18.** Position the 2.75" clamp onto the inlet of the passenger muffler assembly, with the clamp hardware facing to the outside and the clamp nut facing down. Install the muffler inlet onto the passenger side axle pipe outlet. Make sure to have at least 1.625" of overlap at the slip fit connection. Snug the clamp using a 15mm socket and ratchet, leaving it loose enough for later adjustment.

Continued on Next Page . . .

INSTALLATION INSTRUCTIONS

CORSA EXHAUST



- 19.** Repeat **INSTALL STEPS 16-18** to install the CORSA driver side rear muffler assembly onto the outlet of the driver side axle pipe.



- 20.** Locate both CORSA tip assemblies, and two 2.75" clamps. Position a 2.75" clamp onto one of the tip assemblies, and install the exhaust tip onto the passenger side muffler outlet. Adjust the position and rotation of the tip assembly until the tip is centered in the cutout in the rear valence and the CORSA logo is positioned on top of the tip. Repeat this step for the driver side of the vehicle.



- 21.** Reinstall the ground clip onto the passenger front hanger of the rear muffler.



- 22.** Confirm at least a fingertip clearance between the exhaust piping (in front of the rear mufflers) and the wheel sensor wiring for both rear muffler locations. The Sensor wiring can be repositioned and adjusted (if necessary) to create the clearance.

Continued on Next Page . . .

INSTALLATION INSTRUCTIONS

CORSA EXHAUST



- 23.** Confirm at least a fingertip clearance between the chassis heat shield on the passenger side (above front of rear muffler) and the top of the rear muffler case. The heat shielding material can be easily reshaped and adjusted (if necessary) to create the clearance.
- 24.** At this time, visually inspect the exhaust system position, tip alignment, clamp orientation, and exhaust pipe clearance. Make any necessary adjustments at the slip fit joints and flange connection.
- 25.** Torque all supplied flange mounting hardware to 35 ft-lbs. at the two flange connections.
- 26.** With the tips held in the desired location, start at the front of the vehicle, and tighten the nuts on the clamps. Torque all clamp nuts to 45 ft-lbs. (61 N-m) on the 2.75" clamps.

NOTE: During cold weather start-ups, you may experience an exhaust sound that is deeper and louder in tone than usual. This is temporary and will diminish to normal levels once your engine has reached its normal operating temperature.

NOTE: Immediately following the installation of your exhaust system, you may experience a trace of smoke after initial start-up. DO NOT be alarmed. The smoke is caused by the burning of a small amount of forming oil residue used in the manufacturing process.

NOTE: It is strongly suggested that all clamps be checked and tightened after road testing the vehicle once the system has cooled.