

R-9228 Driver sub strap mount for OE e46/e85/e86 slider
R-9229 Passenger sub strap mount for OE e46/e85/e86 slider

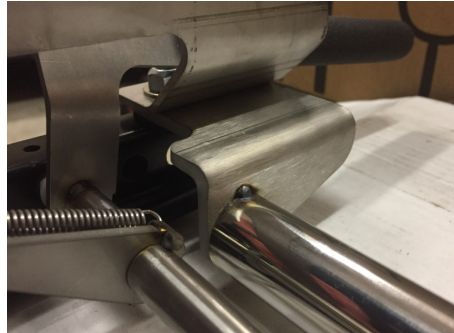
**INSTALLATION INSTRUCTIONS: SUB STRAP MOUNT FOR FACTORY E46/E85/E86
POWER OR MANUAL SLIDERS WITH BREY KRAUSE SEAT MOUNTS**

The R-9228/9 sub strap mount is designed to create a sub strap mounting location on the OE BMW power or manual sliders that were used in the e46, e85, and e86, that can be used in conjunction with the R-9220/1/2/3 seat mounts. The R-9228/9 is not symmetrical, due to the way the seats in the e46/e85/e86 are not centered above the sliders.

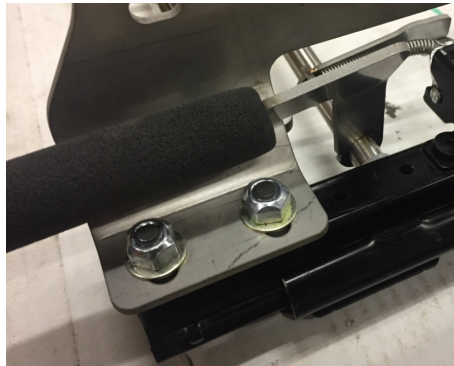
The R-9228/9 sub strap mount uses the same mounting hardware that is already in use, attaching the R-9220/1/2/3 side mounts to the front of the slider. On the inside (tunnel side) slider, the R-9228/9 should be mounted on top of the seat mount.



On the outside (door side) slider, the R-9228/9 should be mounted underneath the seat mount (in place of the spacers included with the R-9220/1/2/3 side mounts).



Secure with the hardware included with the R-9220/1/2/3 seat mounts.



Performance driving events are by nature potentially hazardous to your health. Brey~Krause Mfg. Co. Inc. shall not be liable for injury, consequential, or other types of damages resulting from the use or misuse of our products. Proper installation of these parts is critical and should only be done by a professional shop.